

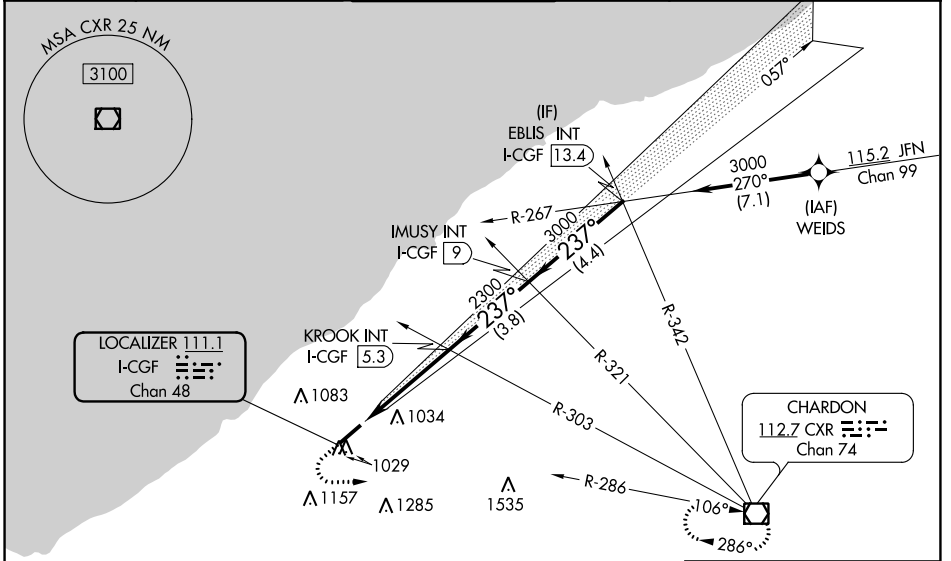
LOC/DME I-CGF <b>111.1</b> Chan 48	APP CRS <b>237°</b>	Rwy Idg TDZE Apt Elev	<b>5000</b> <b>873</b> <b>876</b>
--	------------------------	-----------------------------	---

# ILS or LOC RWY 24

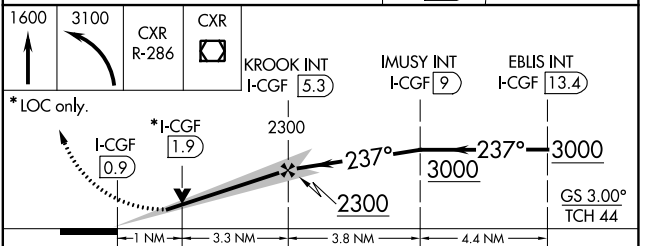
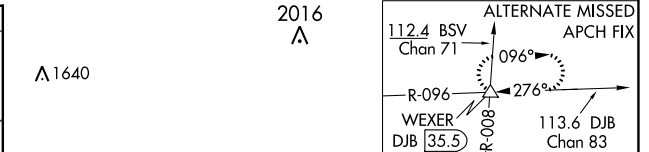
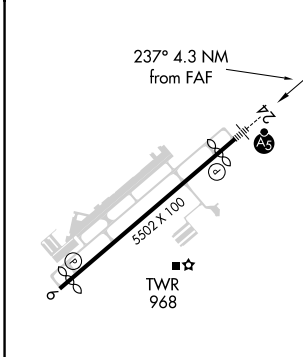
CUYAHOGA COUNTY (CGF)

RNAV 1-GPS or RADAR required for procedure entry. Aircraft not GPS equipped - RADAR required for procedure entry.	MALSR 	MISSED APPROACH: Climb to 1600 then climbing left turn to 3100 on CXR VOR/DME R-286 to CXR VOR/DME and hold.
Rwy 24 helicopter visibility reduction below 3/4 SM NA. For inop ALS increase S-LOC Cats C/D to 1 SM.		

AWOS-3 <b>119.95</b>	CLEVELAND APP CON <b>125.35 346.325</b>	COUNTY TOWER★ <b>118.5 (CTAF)</b>	GND CON <b>121.85</b>	CINC DEL <b>121.85</b> (when tower closed)
-------------------------	--	--------------------------------------	--------------------------	--



ELEV 876	<b>D</b>	TDZE 873
----------	----------	----------



		A	B	C	D
CATEGORY					
S-ILS 24		1073-1/2		200 (200-1/2)	
S-LOC 24		1240-1/2	367 (400-1/2)	1240-5/8	367 (400-5/8)
CIRCLING		1400-1 524 (600-1)	1500-1 624 (700-1)	1560-2 684 (700-2)	1620-2 1/2 744 (800-2 1/2)

EC-2, 08 OCT 2020 to 05 NOV 2020

EC-2, 08 OCT 2020 to 05 NOV 2020