

WAAS CH 70628 W06A	APP CRS 057°	Rwy Idg TDZE Apt Elev	5184 874 876
--	------------------------	-----------------------------	---

RNAV (GPS) RWY 6

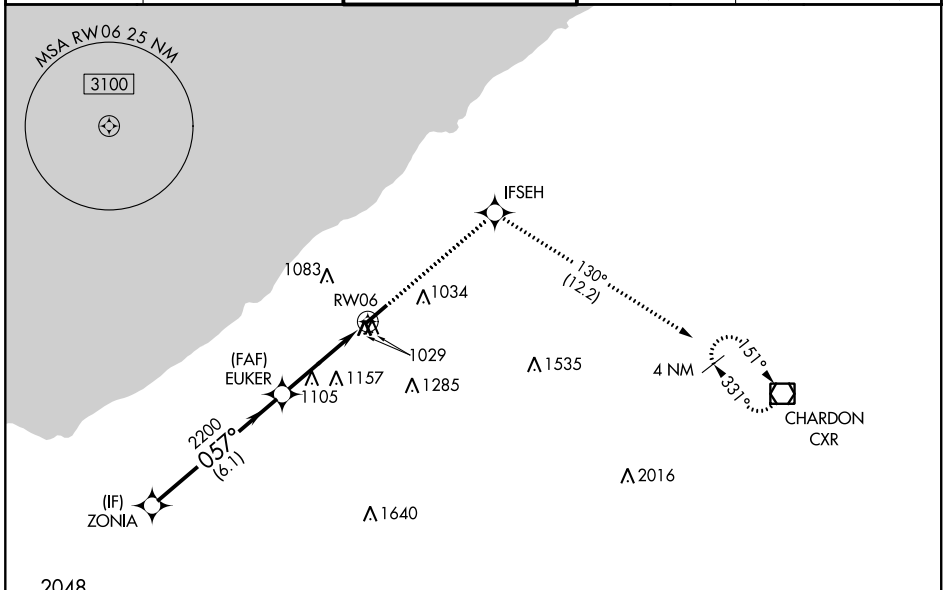
CUYAHOGA COUNTY (CGF)

RNP APCH.

⚠ Rwy 6 helicopter visibility reduction below 3/4 SM NA.
⚠ For uncompensated Baro-VNAV systems, LNAV/VNAV NA below -16°C or above 38°C.

MISSED APPROACH:
 Climb to 3100 direct IFSEH and on track 130° to CXR VOR/DME and hold.

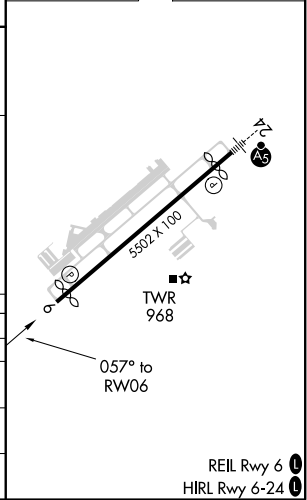
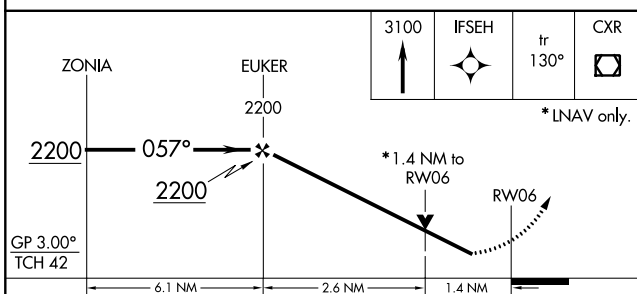
AWOS-3 119.95	CLEVELAND APP CON 125.35 346.325	COUNTY TOWER★ 118.5 (CTAF) 0	GND CON 121.85	CLNC DEL 121.85 (when tower closed)
-------------------------	--	--	--------------------------	--



EC-2, 08 OCT 2020 to 05 NOV 2020

EC-2, 08 OCT 2020 to 05 NOV 2020

ELEV 876	D TDZE 874
----------	-------------------



CATEGORY	A	B	C	D
LPV DA		1175-7/8	301 (300-7/8)	
LNAV/VNAV DA		1375-1 3/8	501 (500-1 3/8)	
LNAV MDA	1360-1	486 (500-1)	1360-1 3/8	486 (500-1 3/8)
C CIRCLING	1400-1 524 (600-1)	1500-1 624 (700-1)	1560-2 684 (700-2)	1600-2 1/4 724 (800-2 1/4)

REIL Rwy 6 **0**
 HIRL Rwy 6-24 **0**