

LOC/DME I-GVT 110.5 Chan 42	APP CRS 176°	Rwy Idg TDZE Apt Elev	8030 534 535
---	------------------------	-----------------------------	---

ILS Y or LOC Y RWY 17

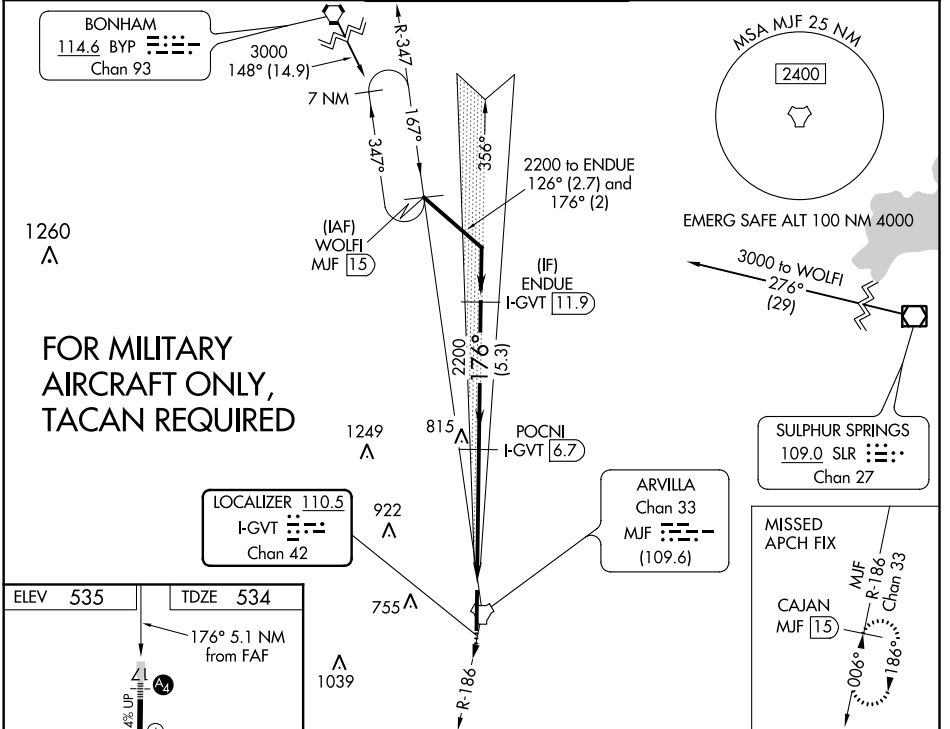
MAJORS (GVT)

DME required.

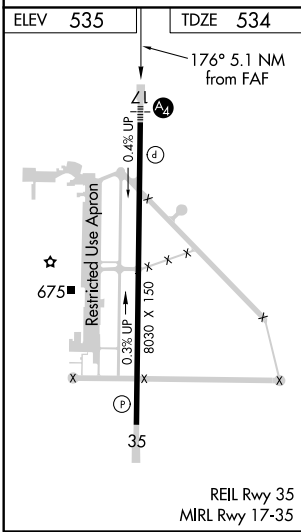
MAIS

MISSED APPROACH: Climbing right turn to 3000 on MUF TACAN R-186 to CAJAN/MUF TACAN 15 DME and hold.

AWOS-3 133.425	FORT WORTH CENTER 132.025 360.75	MAJORS TOWER* 118.65 (CTAF) 0 385.425	GND CON 121.7 335.8	UNICOM 122.95
--------------------------	--	--	-------------------------------	-------------------------



FOR MILITARY AIRCRAFT ONLY, TACAN REQUIRED



3000 MUF R-186 CAJAN MUF 15

VGSi and ILS glidepath not coincident (VGSi Angle 3.00/TCH 74).

POCNI I-GVT [6.7] ENDUE I-GVT [11.9]

*LOC only. *I-GVT [3]

2200 176° 2200

Use I-GVT DME when on localizer course.

GS 3.00° TCH 57

CATEGORY	A	B	C	D	E
S-ILS 17	734-1		200 (200-1)		
S-LOC 17	1060-1	526 (600-1)	1060-1¼ 526 (600-1¼)		
CIRCLING	1060-1	525 (600-1)	1060-1½ 525 (600-1½)	1240-2¼ 705 (800-2¼)	1300-2¾ 765 (800-2¾)

SC-2, 08 OCT 2020 to 05 NOV 2020

SC-2, 08 OCT 2020 to 05 NOV 2020