

APP CRS <b>093°</b>	Rwy Idg <b>5004</b>
	TDZE <b>1184</b>
	Apt Elev <b>1184</b>

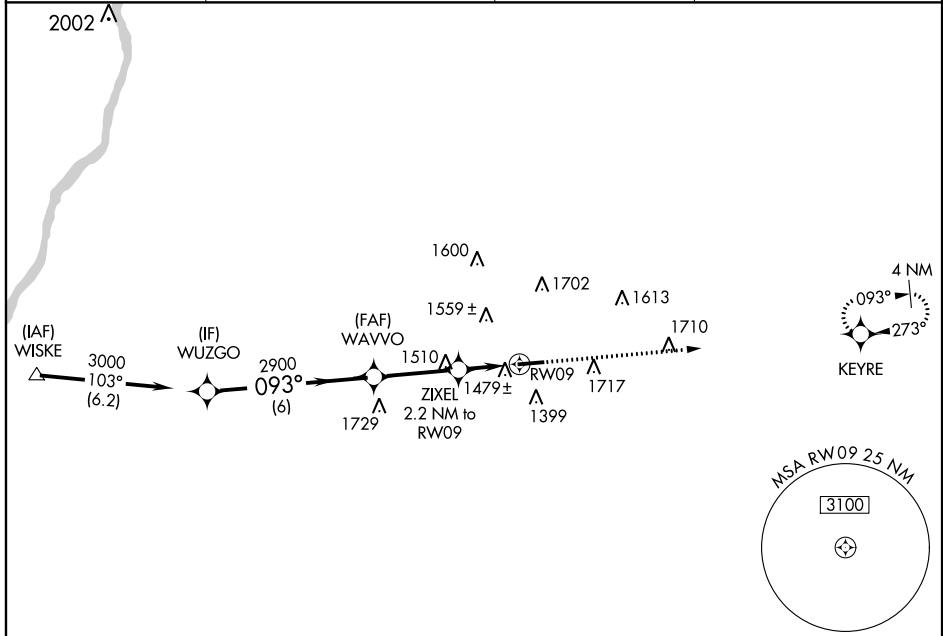
# RNAV (GPS) RWY 9

WASHINGTON COUNTY (A.F.J)

**▽** DME/DME RNP-0.3 NA. Procedure NA at night. When local altimeter setting not received, use Wheeling altimeter setting and increase all MDA 40 feet, and all Cat C/D visibilities ¼ mile. Helicopter visibility reduction below 1 SM NA.

**▲** MISSED APPROACH: Climb to 3000 direct KEYRE and hold.

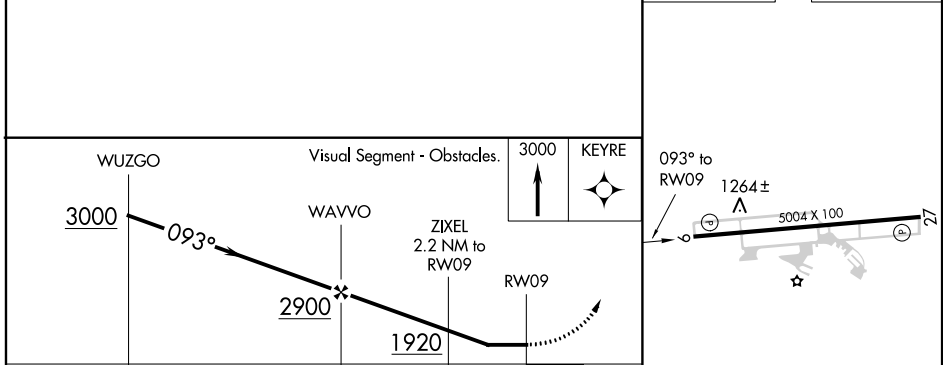
AWOS-3PT <b>119.175</b>	PITTSBURGH APP CON <b>119.35 285.575</b>	CLNC DEL <b>127.3</b>	UNICOM <b>122.975 (CTAF) 0</b>
----------------------------	---	--------------------------	-----------------------------------



NE-4, 08 OCT 2020 to 05 NOV 2020

NE-4, 08 OCT 2020 to 05 NOV 2020

ELEV 1184	TDZE 1184
-----------	-----------



CATEGORY	A	B	C	D
LNVA MDA	1740-1	556 (600-1)	1740-1 $\frac{5}{8}$	556 (600-1 $\frac{5}{8}$ )
CIRCLING	1800-1	616 (700-1)	1800-1 $\frac{3}{4}$ 616 (700-1 $\frac{3}{4}$ )	2040-2 $\frac{3}{4}$ 856 (900-2 $\frac{3}{4}$ )

HIRL Rwy 9-27 **0**

REIL Rwy 27 **0**