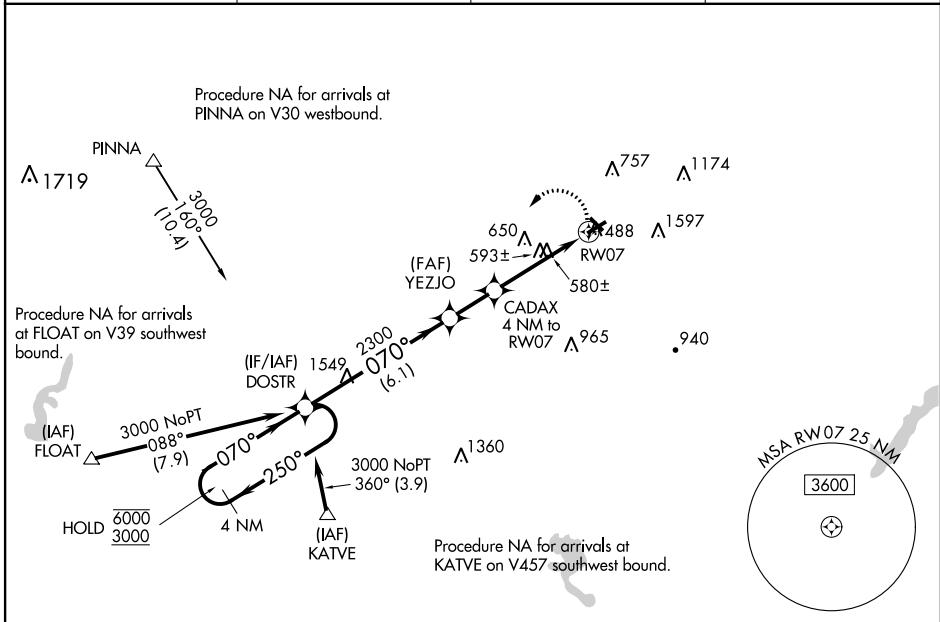


WAAS CH 61224 W07A	APP CRS 070°	Rwy Idg TDZE Apt Elev	3950 390 399
--	------------------------	-----------------------------	---

RNAV (GPS) RWY 7

ALLENTOWN QUEEN CITY MUNI (XLL)

RNP APCH.		MISSED APPROACH: Climbing left turn to 3000 direct DOSTR and hold.	
<p>▼ Circling NA south of Rws 7 and 25. Rwy 7 helicopter visibility reduction below 3/4 SM NA. Circling Rwy 15 NA at night.</p>			
AWOS-3 127.875	ALLENTOWN APP CON 119.65 124.45 351.8	CLNC DEL 118.9	UNICOM 122.7 (CTAF) 0



NE-4, 08 OCT 2020 to 05 NOV 2020

NE-4, 08 OCT 2020 to 05 NOV 2020

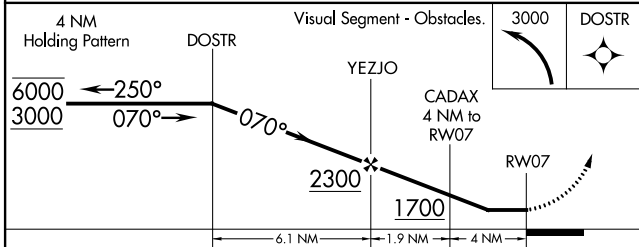
ELEV 399	TDZE 390
----------	----------

Obstacle: 3160 X 75, 3950 X 75, 33.

Dimensions: 57' 10.48" UP.

070° to RWY 07

MIRL Rws 7-25 and 15-33 0
REIL Rws 7 and 25 0



CATEGORY	A	B	C	D
LP MDA	940-1	550 (600-1)	940-1 5/8 550 (600-1 5/8)	NA
LNAV MDA	1060-1	670 (700-1)	1060-1 7/8 670 (700-1 7/8)	NA
CIRCLING	1060-1	661 (700-1)	1060-1 7/8 661 (700-1 7/8)	NA