

WAAS CH 50400 W13A	APP CRS 133°	Rwy Idg TDZE 1306 Apt Elev 1306	6095
--	------------------------	---	-------------

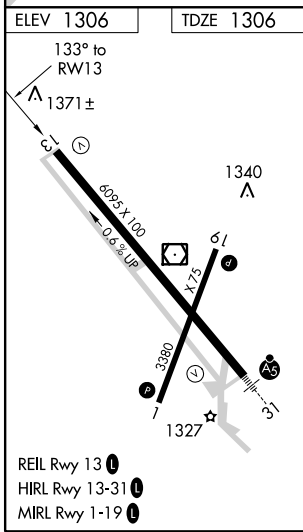
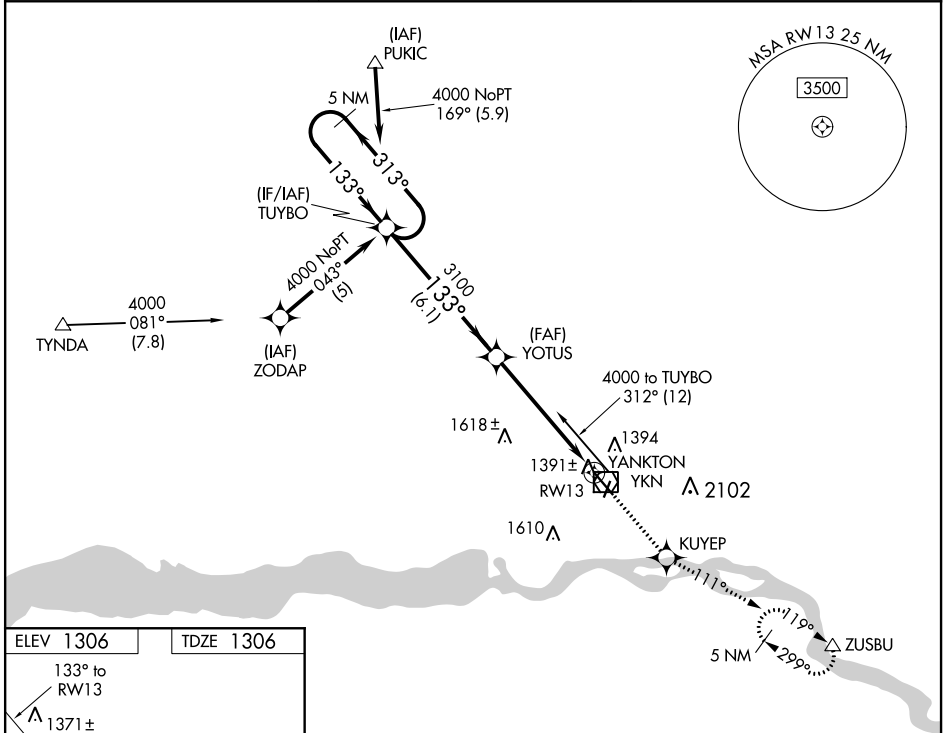
RNAV (GPS) RWY 13

CHAN GURNEY MUNI (YKN)

⚠ If local altimeter setting not received, use Sioux Falls altimeter setting and increase all DAs/MDAs 140 feet.
⚠ DME/DME RNP -0.3 NA.
 Visibility reduction by helicopters NA.

MISSED APPROACH: Climb to 4000 direct KUYEP and via 111° track to ZUSBU and hold, continue climb-in-hold to 4000.

AWOS-3PT 119.05	MINNEAPOLIS CENTER 125.025 235.625	UNICOM 122.8 (CTAF)
---------------------------	--	-------------------------------



	5 NM Holding Pattern	TUYBO	YOTUS	4000	KUYEP	tr 111°	ZUSBU
	4000	← 313°	→ 133°	733°	3100	* 1.1 NM to RW13	RW13
	GP 3.00°	TCH 40	6.1 NM	4.3 NM	1.1 NM		
CATEGORY	A	B	C	D			
LPV DA	1556-1 250 (300-1)						
RNAV MDA	1700-1 394 (400-1)			1700-1¼ 394 (400-1¼)			
CIRCLING	1780-1 474 (500-1)		1780-1½ 474 (500-1½)		1860-2 554 (600-2)		

NC-1, 08 OCT 2020 to 05 NOV 2020

NC-1, 08 OCT 2020 to 05 NOV 2020