

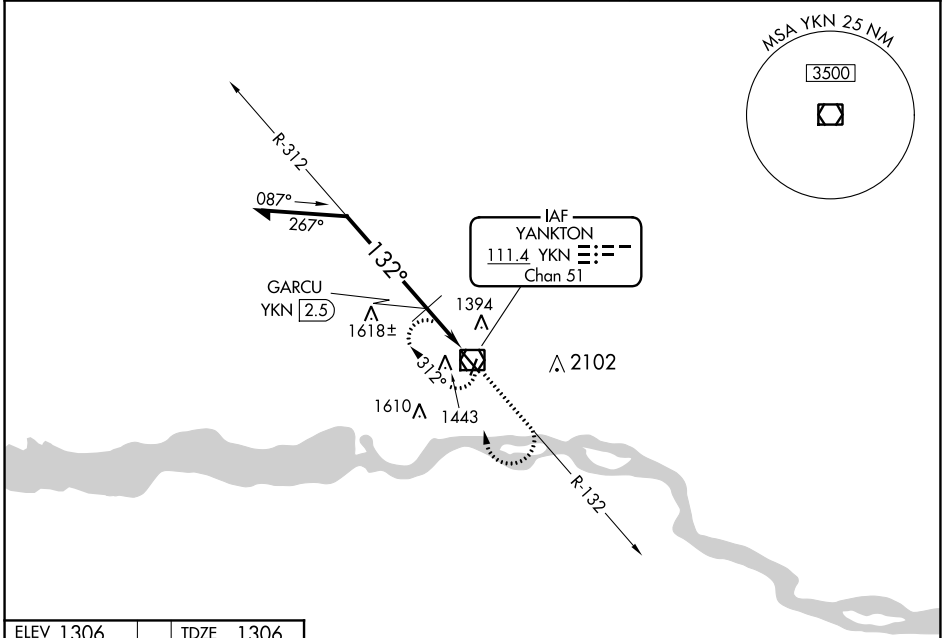
VOR/DME YKN <b>111.4</b> Chan <b>51</b>	APP CRS <b>132°</b>	Rwy Idg <b>6095</b> TDZE <b>1306</b> Apt Elev <b>1306</b>
---	------------------------	---

**VOR RWY 13**  
CHAN GURNEY MUNI (YKN)

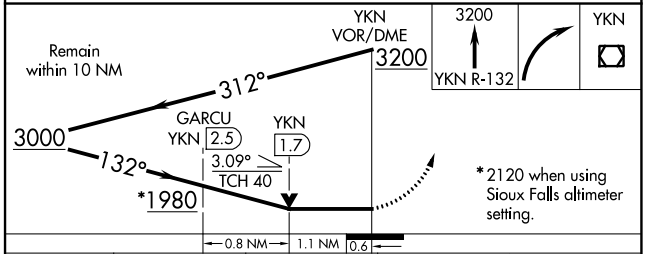
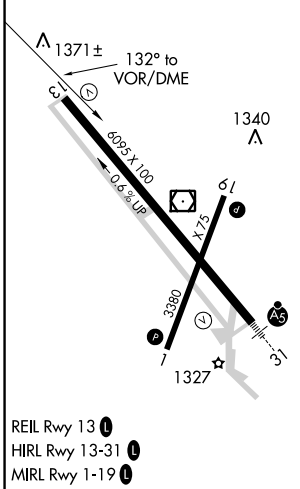
**⚠** If local altimeter setting not received, use Sioux Falls altimeter setting and increase all MDAs 140 feet. VDP NA when using Sioux Falls altimeter setting. Visibility reduction by helicopters NA.

**MISSED APPROACH:** Climb to 3200 via YKN VOR/DME R-132 then right turn direct YKN VOR/DME and hold.

AWOS-3PT <b>119.05</b>	MINNEAPOLIS CENTER <b>125.025 235.625</b>	UNICOM <b>122.8 (CTAF) 0</b>
---------------------------	--	---------------------------------



ELEV 1306	TDZE 1306
-----------	-----------



CATEGORY	A	B	C	D
S-13	1980-1 674 (700-1)		1980-2 674 (700-2)	1980-2 1/4 674 (700-2 1/4)
CIRCLING	1980-1 674 (700-1)		1980-2 674 (700-2)	1980-2 1/4 674 (700-2 1/4)
GURCU FIX MINIMUMS				
S-13	1700-1 394 (400-1)			1700-1 1/4 394 (400-1 1/4)
CIRCLING	1780-1 474 (500-1)		1780-1 1/2 474 (500-1 1/2)	1860-2 554 (600-2)

NC-1, 08 OCT 2020 to 05 NOV 2020

NC-1, 08 OCT 2020 to 05 NOV 2020