

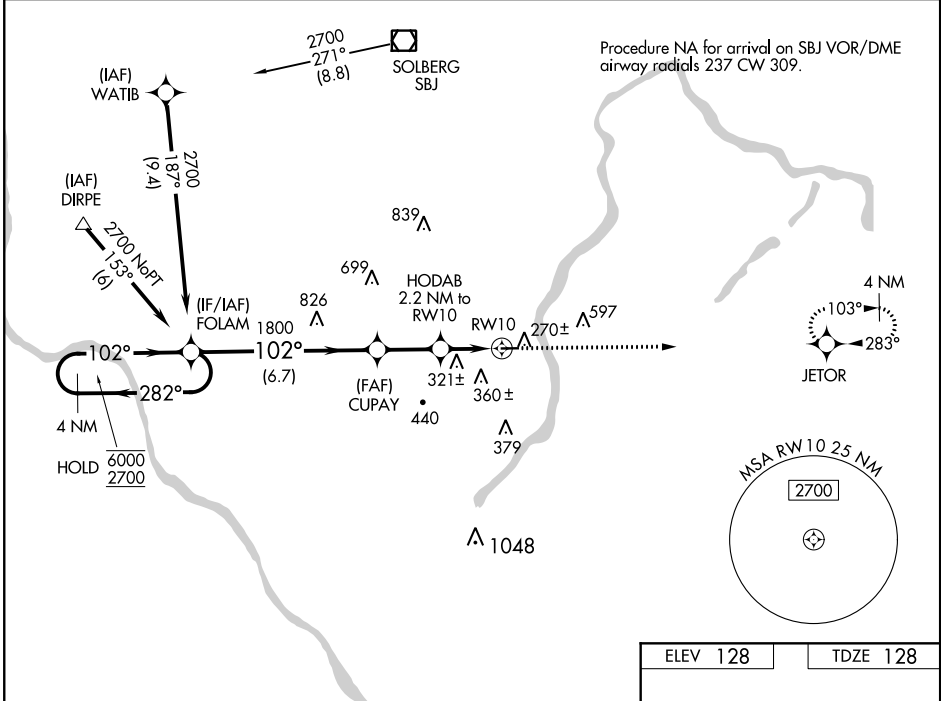
WAAS CH 86843 W10A	APP CRS 102°	Rwy Idg TDZE Apt Elev	3499 128 128
--	------------------------	-----------------------------	---

RNAV (GPS) RWY 10

PRINCETON (39N)

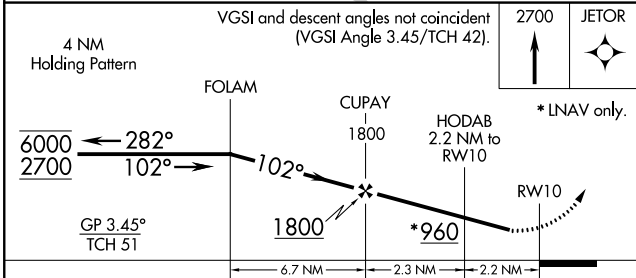
RNP APCH.	<p>▼ Rwy 10 helicopter visibility reduction below 1 SM NA. Baro-VNAV NA.</p> <p>▲ NA Procedure NA at night. Use Trenton altimeter setting.</p>	MISSED APPROACH: Climb to 2700 direct JETOR and hold.
-----------	--	---

TTN ASOS 126.775	NEW YORK APP CON 132.8 379.9	UNICOM 122.725 (CTAF)	123.05 0
----------------------------	--	---------------------------------	-----------------

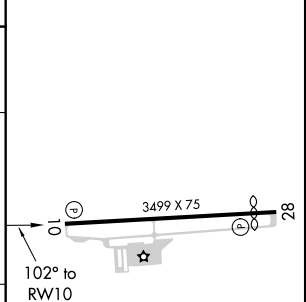


NE-2, 08 OCT 2020 to 05 NOV 2020

NE-2, 08 OCT 2020 to 05 NOV 2020



ELEV 128	TDZE 128
----------	----------



CATEGORY	A	B	C	D
LPV DA		441-1	313 (400-1)	
LNAV/VNAV DA		533-1½	405 (500-1½)	
LNAV MDA	580-1	452 (500-1)	580-1¾	452 (500-1¾)
CIRCLING	760-1 632 (700-1)	840-1 712 (800-1)	940-2½ 812 (900-2½)	1000-2¾ 872 (900-2¾)

MIRL Rwy 10-28 0
REIL Rwy 10 0