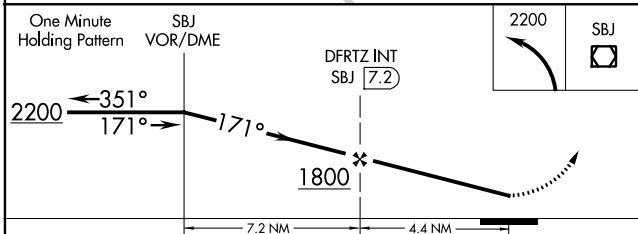
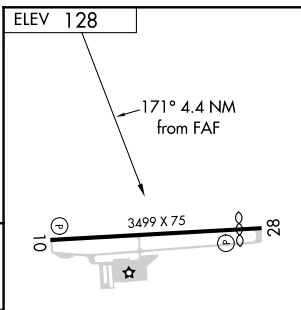
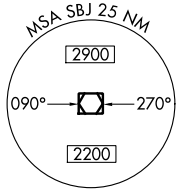
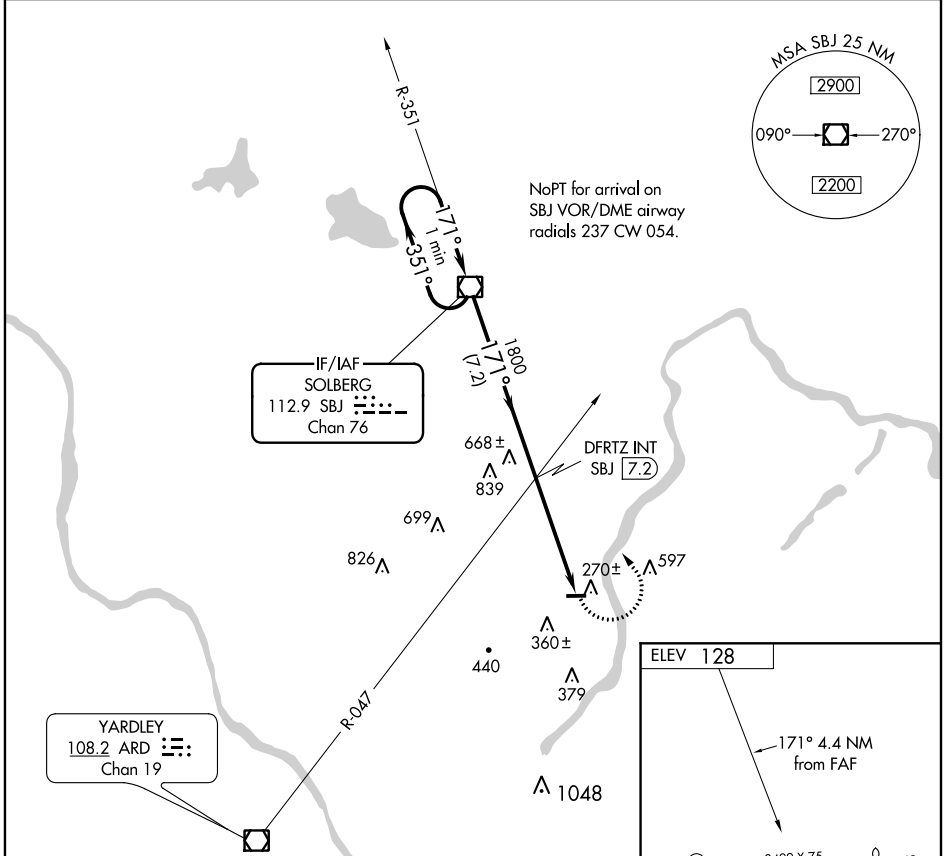


VOR/DME SBJ <b>112.9</b> Chan <b>76</b>	APP CRS <b>171°</b>	Rwy Idg TDZE Apt Elev <b>128</b>	<b>N/A</b> <b>N/A</b> <b>128</b>
---	------------------------	---	--

**VOR-A**  
PRINCETON (39N)

<b>▼</b> <b>▲</b> NA	Use Trenton Mercer altimeter setting, if not received use Somerset altimeter setting. Procedure NA at night. Helicopter visibility reduction below 1 SM NA.	MISSED APPROACH: Climbing left turn to 2200 direct SBJ VOR/DME and hold.
-------------------------	---	--

TTN ASOS <b>126.775</b>	NEW YORK APP CON <b>132.8 379.9</b>	UNICOM <b>122.725</b> (CTAF)	<b>123.05</b> <b>0</b>
----------------------------	--	---------------------------------	------------------------



CATEGORY	A	B	C	D	FAF to MAP 4.4 NM					
CIRCLING	960-1 832 (900-1)	960-1¼ 832 (900-1¼)	NA		Knots	60	90	120	150	180
					Min:Sec	4:24	2:56	2:12	1:46	1:28

NE-2, 08 OCT 2020 to 05 NOV 2020

NE-2, 08 OCT 2020 to 05 NOV 2020