

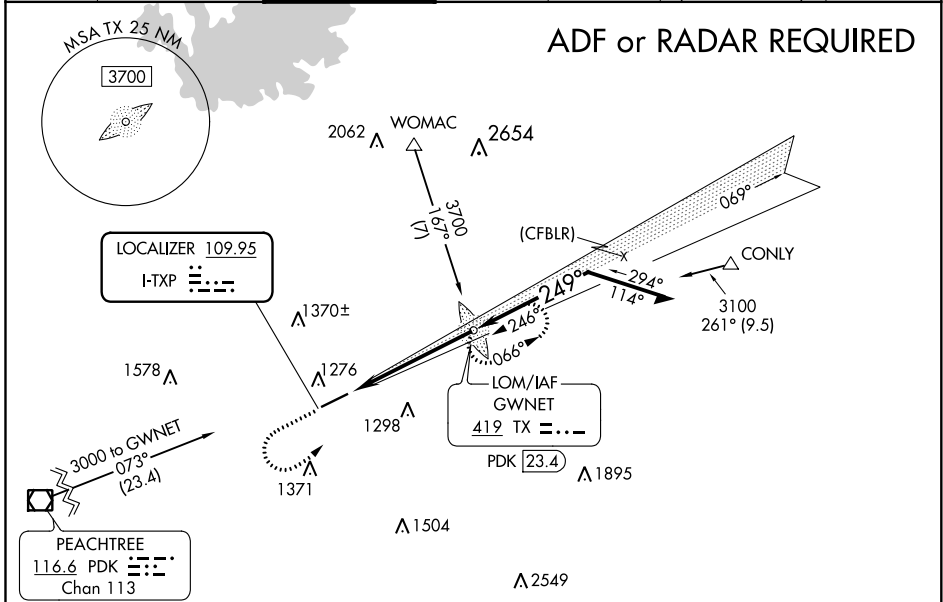
LOC I-TXP <b>109.95</b>	APP CRS <b>249°</b>	Rwy Idg TDZE Apt Elev	<b>6000</b> <b>1038</b> <b>1062</b>
----------------------------	------------------------	-----------------------------	---

# ILS or LOC RWY 25

GWINNETT COUNTY-BRISCOE FIELD (LZU)

<p><b>⚠</b> When local altimeter setting not received, use Winder altimeter setting and increase all DA 51 feet, and all MDA 60 feet, increase S-LOC 25 Cat C/D and Circling Cat C/D visibility 1/2 SM. ADF required. For inop MALSR, when using Winder altimeter setting increase S-ILS 25 all Cats visibility to 3/8 SM.</p>		<p>MALSR</p>	<p>MISSED APPROACH: Climb to 1800 then climbing left turn to 3000 direct GWNET LOM and hold.</p>			
ATIS <b>132.275</b>	ATLANTA APP CON <b>126.975 239.275</b>	GWINNETT TOWER * <b>124.1</b> (CTAF) <b>Ⓛ</b>	GND CON <b>121.8</b>	CLNC DEL <b>121.8</b>	CLNC DEL <b>134.0</b> (When twr closed)	UNICOM <b>123.05</b>

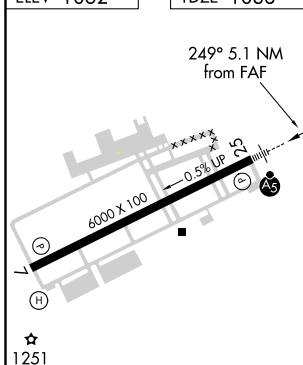
## ADF or RADAR REQUIRED



SE-4, 08 OCT 2020 to 05 NOV 2020

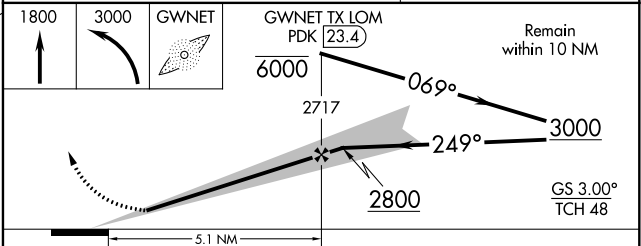
SE-4, 08 OCT 2020 to 05 NOV 2020

ELEV 1062	TDZE 1038
-----------	-----------



ALTERNATIVE MISSED APCH FIX

GWNET  
419 TX **---**  
PDK **23.4**



HIRL Rwy 7-25 <b>Ⓛ</b>					
FAF to MAP 5.1 NM					
Knots	60	90	120	150	180
Min:Sec	5:06	3:24	2:33	2:02	1:42
CATEGORY	A	B	C	D	
S-ILS 25	1238-1/2		200 (200-1/2)		
S-LOC 25	1540-1/2 502 (500-1/2)		1540-1 502 (500-1)		
CIRCLING	1640-1 578 (600-1)		1640-1 1/2 578 (600-1 1/2)		1700-2 638 (700-2)