

WAAS CH <b>97621</b> <b>W07A</b>	APP CRS <b>069°</b>	Rwy Idg TDZE Apt Elev	<b>6000</b> <b>1061</b> <b>1062</b>
--	------------------------	-----------------------------	---

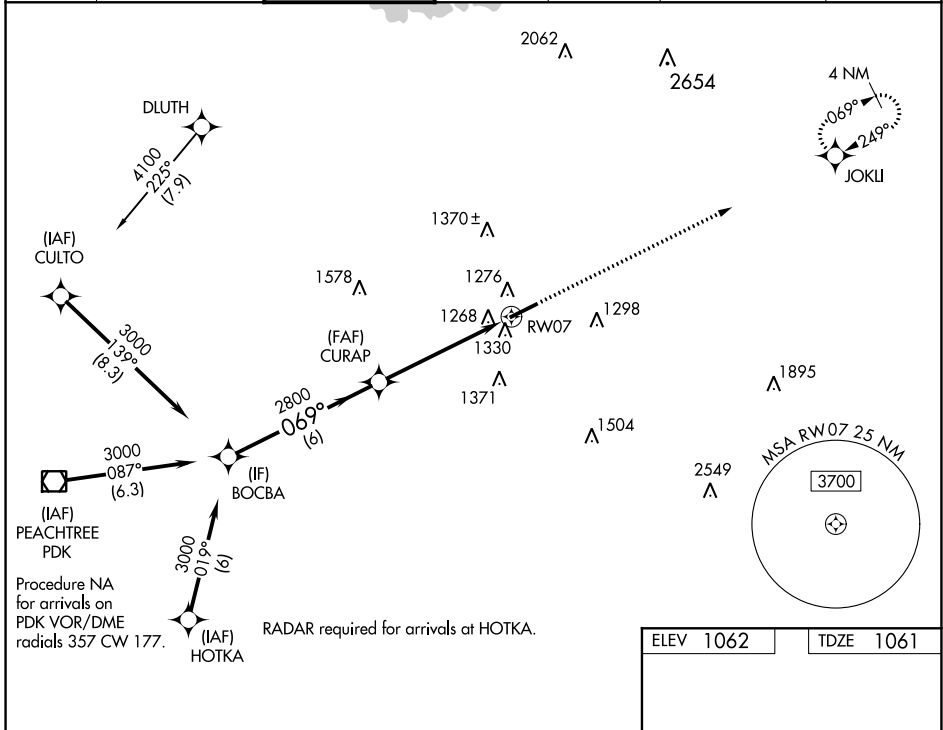
# RNAV (GPS) RWY 7

GWINNETT COUNTY-BRISCOE FIELD (LZU)

**⚠** DME/DME RNP-0.3 NA. When local altimeter setting not received, use Winder altimeter setting and increase all MDA 60 feet and LNAV and Circling Cats C/D visibility 1/4 mile.  
**⚠** Rwy 7 helicopter visibility reduction below 3/4 SM NA.

**MISSED APPROACH:**  
Climb to 3000 direct JOKLI and hold.

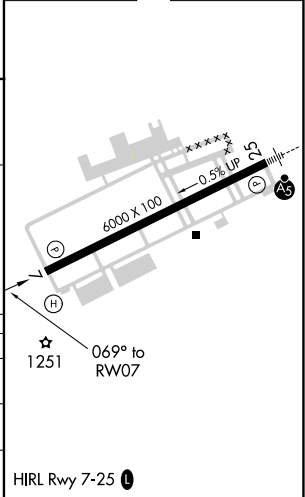
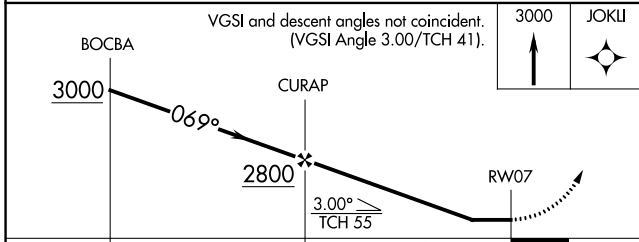
ATIS <b>132.275</b>	ATLANTA APP CON <b>126.975 239.275</b>	<b>GWINNETT TOWER</b> * <b>124.1</b> (CTAF) <b>0</b>	GND CON <b>121.8</b>	CLNC DEL <b>121.8</b>	CLNC DEL <b>134.0</b> (When twr closed)	UNICOM <b>123.05</b>
------------------------	---	---	-------------------------	--------------------------	---	-------------------------



SE-4, 08 OCT 2020 to 05 NOV 2020

SE-4, 08 OCT 2020 to 05 NOV 2020

ELEV 1062	TDZE 1061
-----------	-----------



CATEGORY	A	B	C	D
LP MDA	1520-1	459 (500-1)	1520-1 3/8	459 (500-1 1/8)
LNAV MDA	1580-1	519 (600-1)	1580-1 3/8	519 (600-1 1/8)
CIRCLING	1640-1	578 (600-1)	1640-1 1/2	1700-2 638 (700-2)