

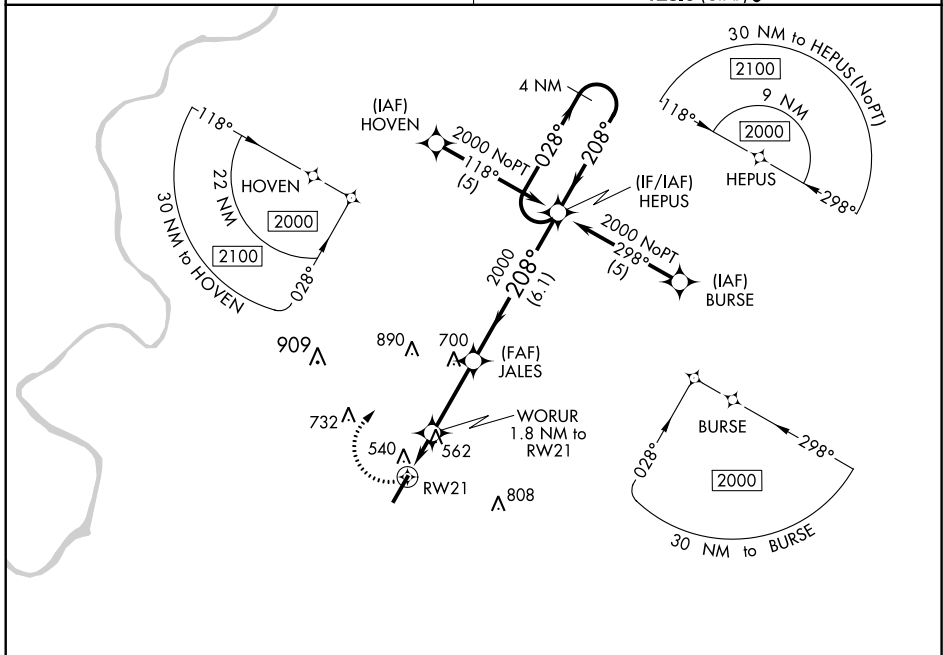
APP CRS 208°	Rwy Idg TDZE Apt Elev	6028 419 419
------------------------	-----------------------------	---

RNAV (GPS) RWY 21
MONROE COUNTY AEROPLEX (MVC)

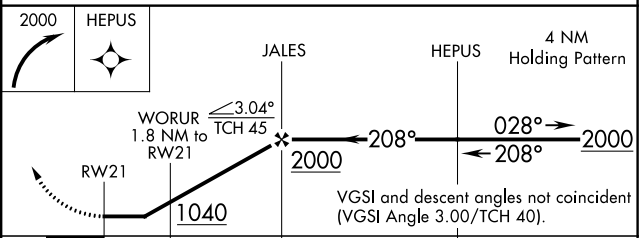
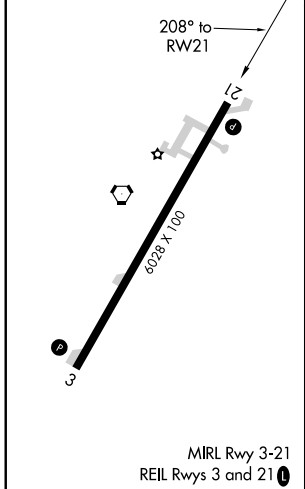
RNP APCH.	Obtain local altimeter setting on CTAF; when not received, use Evergreen Rgnl/Middleton Field altimeter setting. Procedure NA at night. Rwy 21 helicopter visibility reduction below 1 SM NA.	MISSED APPROACH: Climbing right turn to 2000 direct HEPUS and hold.
-----------	--	--

ATLANTA CENTER
118.55 267.9

UNICOM
123.0 (CTAF)



ELEV 419	TDZE 419
----------	----------



CATEGORY	A	B	C	D
LNAV/MDA	880-1	461 (500-1)	880-1 ³ / ₄ 461 (500-1 ³ / ₄)	880-1 ¹ / ₂ 461 (500-1 ¹ / ₂)
CIRCLING	880-1 461 (500-1)	920-1 501 (600-1)	920-1 ¹ / ₂ 501 (600-1 ¹ / ₂)	1120-2 ¹ / ₄ 701 (800-2 ¹ / ₄)
EVERGREEN RGNL/MIDDLETON FIELD ALTIMETER SETTING MINIMUMS				
LNAV/MDA	940-1	521 (600-1)	940-1 ¹ / ₂ 521 (600-1 ¹ / ₂)	940-1 ³ / ₄ 521 (600-1 ³ / ₄)
CIRCLING	940-1	521 (600-1)	980-1 ¹ / ₂ 561 (600-1 ¹ / ₂)	1180-2 ¹ / ₂ 761 (800-2 ¹ / ₂)

SE-4, 08 OCT 2020 to 05 NOV 2020

SE-4, 08 OCT 2020 to 05 NOV 2020