

APP CRS	Rwy Idg	3779
263°	TDZE	632
	Apt Elev	634

RNAV (GPS) RWY 26

GRIFFITH-MERRILLVILLE (Ø5C)

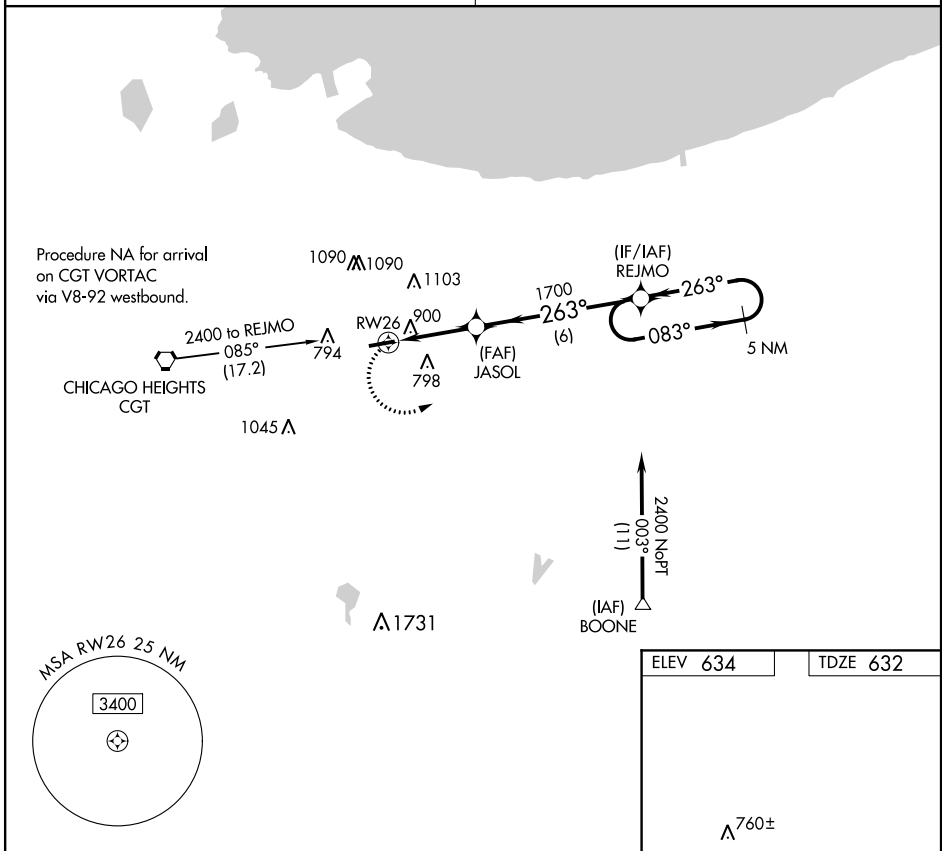
RNP APCH

▼ Obtain local altimeter setting on CTAF; when not received use Chicago Midway
 ▲ NA Init altimeter setting and increase all MDAs 60 feet. Visibility reduction by
 helicopters NA. Procedure NA at night.

MISSED APPROACH: Climbing left
 turn to 2400 direct REJMO and hold.

CHICAGO APP CON
133.1 285.6

UNICOM
123.0 (CTAF) 0



ELEV 634	TDZE 632
----------	----------

5 NM Holding Pattern

REJMO

JASOL

263°

083°

2400

760±

4899 X 75

263° to RW26

CATEGORY	A	B	C	D
LNAV MDA	1160-1	528 (600-1)		NA
CIRCLING	1200-1	566 (600-1)		NA

REL Rwy 8 and 26 0

MRL Rwy 8-26 0

2400 REJMO

VGSI and descent angles not coincident (VGSI Angle 4.00/TCH 33).

5 NM Holding Pattern

RW26

JASOL

REJMO

263°

083°

2400

3.03° TCH 33

1700

3.2 NM

6 NM

CATEGORY	A	B	C	D
LNAV MDA	1160-1	528 (600-1)		NA
CIRCLING	1200-1	566 (600-1)		NA

EC-2, 08 OCT 2020 to 05 NOV 2020

EC-2, 08 OCT 2020 to 05 NOV 2020