

WAAS CH <b>90534</b> W <b>18A</b>	APP CRS <b>182°</b>	Rwy Idg TDZE <b>675</b> Apt Elev <b>686</b>	<b>4799</b> <b>675</b> <b>686</b>
---	------------------------	---	---

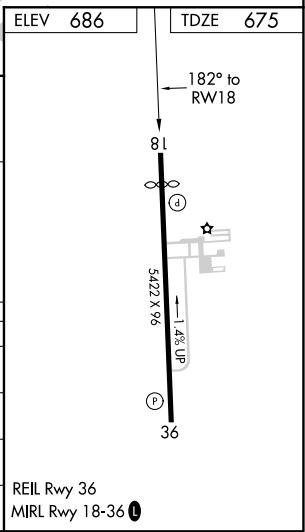
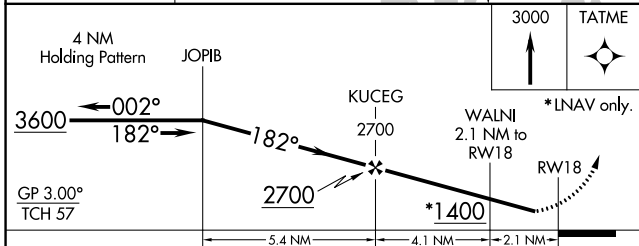
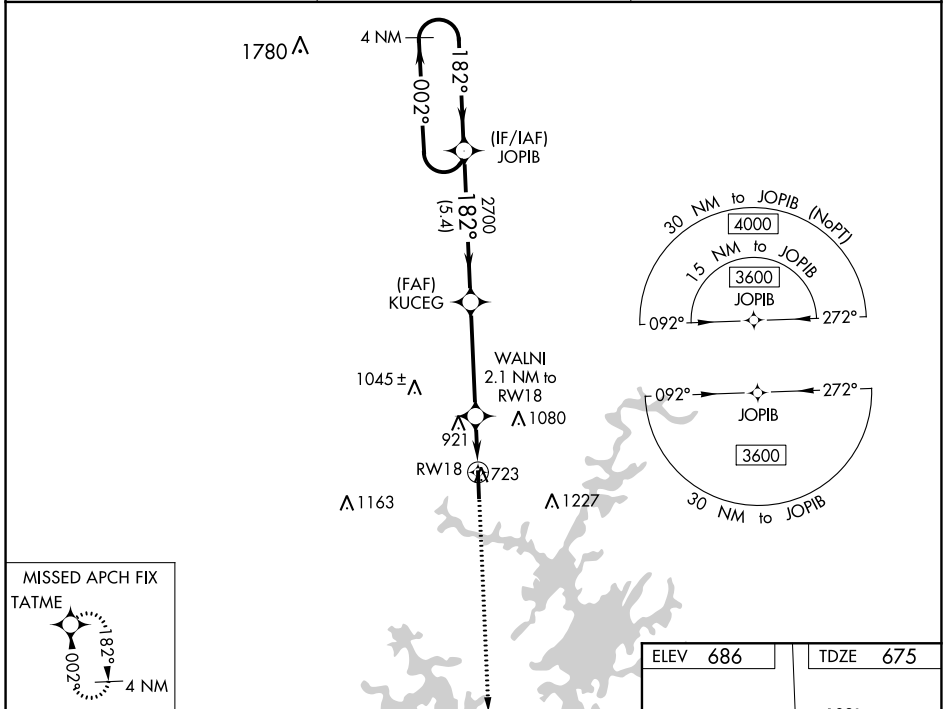
# RNAV (GPS) RWY 18

THOMAS C RUSSELL FIELD (A.L.X)

**⚠** For uncompensated Baro-VNAV systems, LNAV/VNAV NA below -16°C (4°F) or above 54°C (130°F). Rwy 18 helicopter visibility reduction below 1 SM NA. DME/DME RNP-0.3 NA.

MISSED APPROACH: Climb to 3000 direct TATME and hold.

AWOS-3PT <b>118.325</b>	MONTGOMERY APP CON * <b>121.2 269.05</b>	UNICOM <b>122.7</b> (CTAF) <b>①</b>
----------------------------	---	--



CATEGORY	A	B	C	D
LPV DA		1061-1 $\frac{1}{4}$	386 (400-1 $\frac{1}{4}$ )	
LNAV/ VNAV DA		1214-1 $\frac{3}{4}$	539 (600-1 $\frac{3}{4}$ )	
LNAV MDA	1160-1	485 (500-1)	1160-1 $\frac{3}{8}$	485 (500-1 $\frac{5}{8}$ )
<b>C</b> CIRCLING	1180-1 494 (500-1)	1240-1 554 (600-1)	1540-2 $\frac{1}{2}$ 854 (900-2 $\frac{1}{2}$ )	1540-2 $\frac{3}{4}$ 854 (900-2 $\frac{3}{4}$ )

SE-4, 08 OCT 2020 to 05 NOV 2020

SE-4, 08 OCT 2020 to 05 NOV 2020