

WAAS CH <b>61231</b> <b>W36A</b>	APP CRS <b>002°</b>	Rwy Idg TDZE <b>648</b> Apt Elev <b>686</b>	<b>5422</b> <b>648</b> <b>686</b>
--	------------------------	---	---

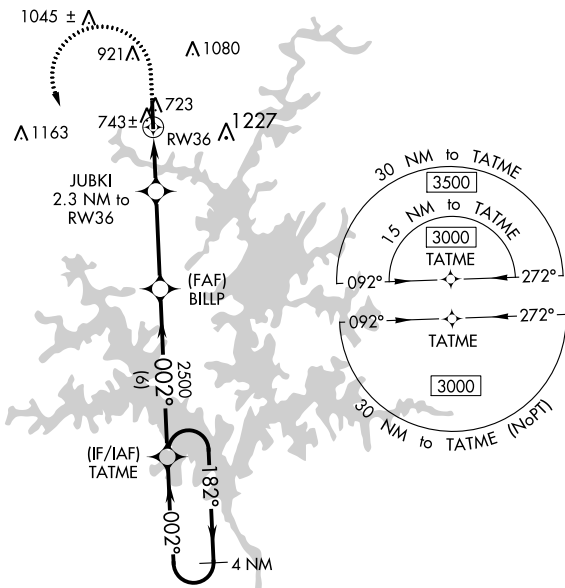
# RNAV (GPS) RWY 36

THOMAS C RUSSELL FIELD (A.L.X.)

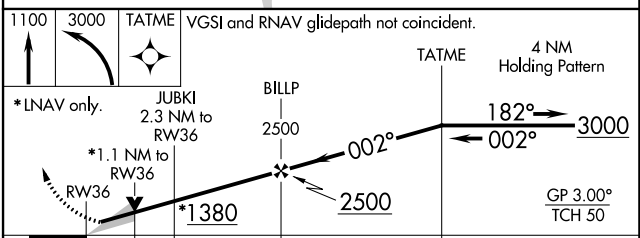
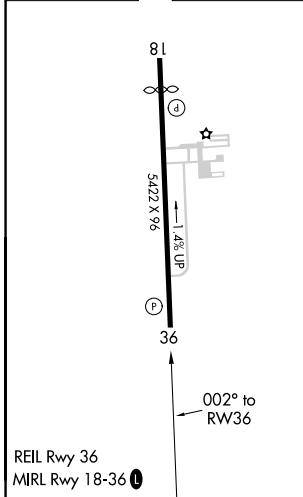
**⚠** For uncompensated Baro-VNAV systems, LNAV/VNAV NA below -16°C (4°F) or above 54°C (130°F). DME/DME RNP-0.3 NA.

**⚠** MISSED APPROACH: Climb to 1100 then climbing left turn to 3000 direct TATME and hold.

AWOS-3PT <b>118.325</b>	MONTGOMERY APP CON ★ <b>121.2 269.05</b>	UNICOM <b>122.7 (CTAF) 0</b>
----------------------------	---	---------------------------------



ELEV <b>686</b>	TDZE <b>648</b>
-----------------	-----------------



CATEGORY	A	B	C	D
LPV DA		898-1	250 (300-1)	
LNAV/LNAV DA		940-1½		292 (300-1½)
LNAV MDA	1000-1	352 (400-1)	1000-1½	352 (400-1½)
<b>C</b> CIRCLING	1180-1 494 (500-1)	1240-1 554 (600-1)	1540-2½ 854 (900-2½)	1540-2¾ 854 (900-2¾)

SE-4, 08 OCT 2020 to 05 NOV 2020

SE-4, 08 OCT 2020 to 05 NOV 2020