

WAAS CH <b>97320</b> <b>W26A</b>	APP CRS <b>255°</b>	Rwy Idg TDZE Apt Elev	<b>4858</b> <b>636</b> <b>652</b>
--	------------------------	-----------------------------	---

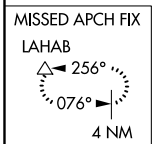
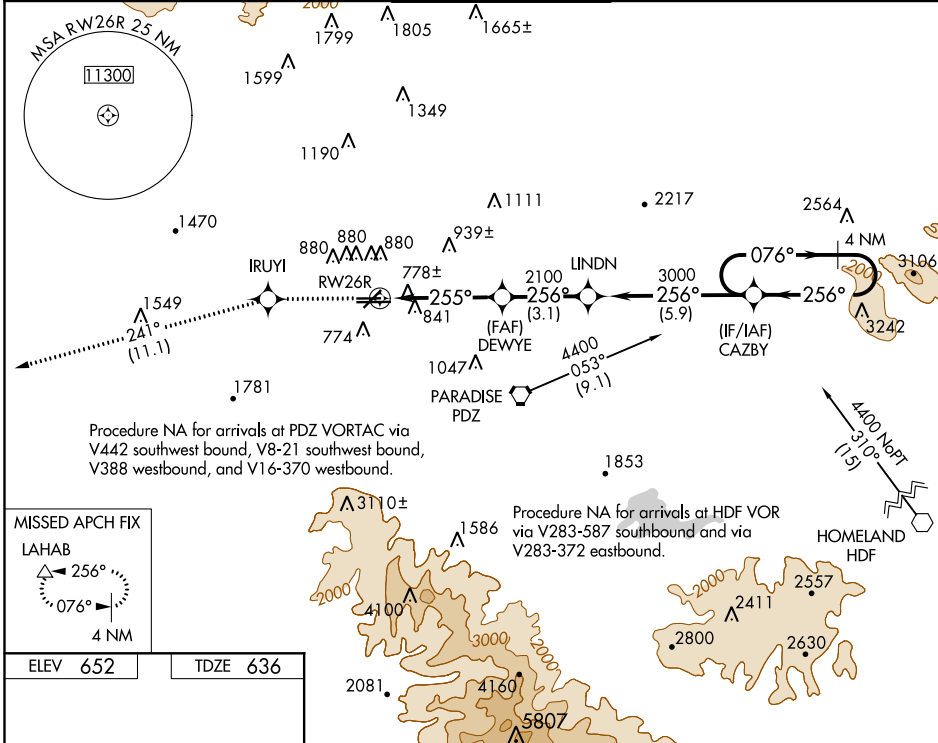
# RNAV (GPS) RWY 26R

CHINO (CNO)

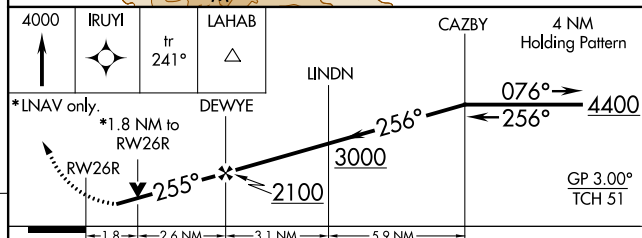
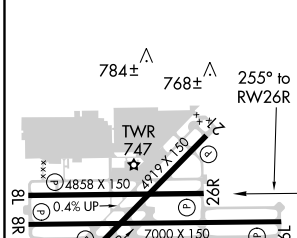
For uncompensated Baro-VNAV systems, LNAV/VNAV NA below -16°C (4°F) or above 47°C (116°F). DME/DME RNP-0.3 NA. Helicopter visibility reduction below 3/4 SM not authorized.

MISSED APPROACH: Climb to 4000 direct IRUYI and via 241° track to LAHAB and hold.

ATIS <b>125.85</b>	SOCAL APP CON <b>135.4 318.2</b>	CHINO TOWER * <b>118.5 (CTAF)</b>	GND CON <b>121.6</b>	UNICOM <b>122.95</b>
-----------------------	-------------------------------------	--------------------------------------	-------------------------	-------------------------



ELEV 652	TDZE 636
----------	----------



CATEGORY	A	B	C	D
LPV DA		1030-1¼	394 (400-1¼)	
LNAV/VNAV DA		1177-2	541 (600-2)	
LNAV MDA	1260-1	624 (700-1)	1260-1¾ 624 (700-1¾)	1260-2 624 (700-2)
CIRCLING		1260-1¾	608 (700-1¾)	1260-2 608 (700-2)

REIL Rwy 3 and 21  
MIRL Rwy 3-21 and 8R-26L  
HIRL Rwy 8L-26R

SW-3, 08 OCT 2020 to 05 NOV 2020

SW-3, 08 OCT 2020 to 05 NOV 2020