


|  |                        |   |
|--|------------------------|---|
| WAAS<br>CH <b>82106</b><br><b>W12A</b> | APP CRS<br><b>125°</b> | Rwy Idg <b>7221</b><br>TDZE <b>1183</b><br>Apt Elev <b>1183</b> |
|--|------------------------|---|

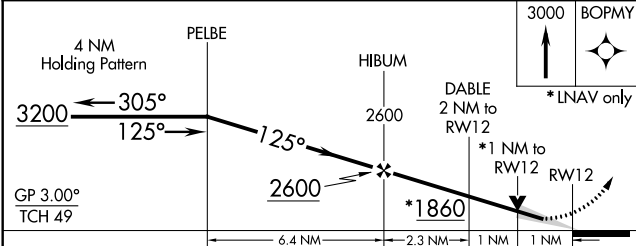
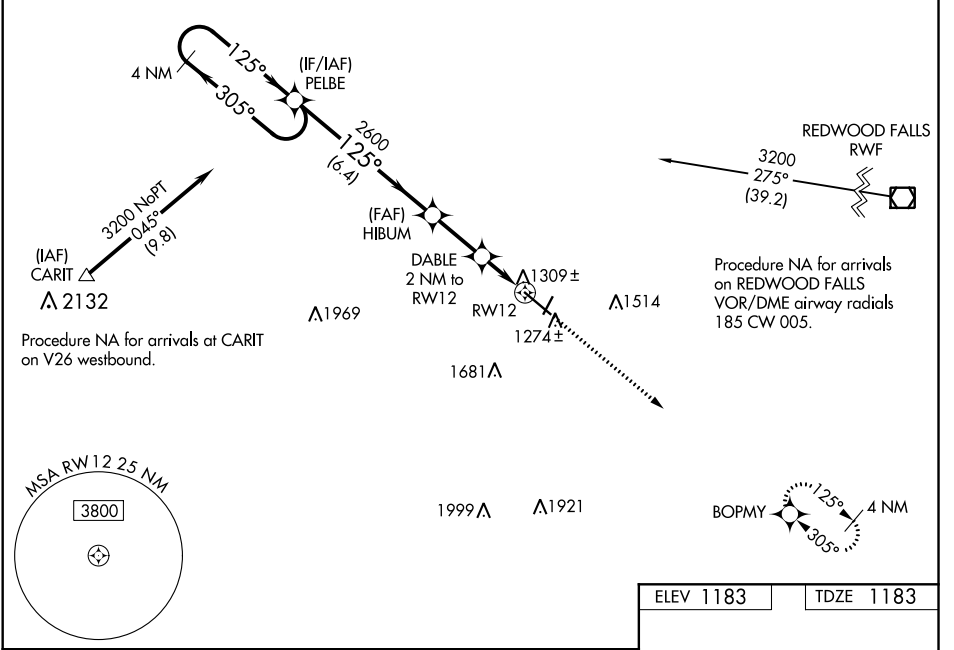
# RNAV (GPS) RWY 12

SOUTHWEST MINNESOTA RGNL MARSHALL/RYAN FIELD (MML)

**⚠** Baro-VNAV and VDP NA when using Tracy Muni altimeter setting. For uncompensated Baro-VNAV systems, LNAV/VNAV NA below -17°C (2°F) or above 36°C (96°F). When local altimeter setting not received, use Tracy Muni altimeter setting and increase all DA 58 feet and all MDA 60 feet. Increase LNAV/VNAV and LNAV Cats C/D visibility to ¾ mile. DME/DME RNP-0.3 NA. For inoperative MALSR, increase LNAV Cats C/D visibility to 1 mile. For inoperative MALSR when using Tracy Muni altimeter setting, increase LPV all Cats to ½ mile.

**MALSR**  
  
**MISSED APPROACH:**  
 Climb to 3000 direct BOPMY and hold.

|                            |  |                       |                               |
|----------------------------|--|-----------------------|-------------------------------|
| AWOS-3PT<br><b>120.150</b> | MINNEAPOLIS CENTER<br><b>127.1 290.2</b> | GCO<br><b>121.725</b> | UNICOM<br><b>122.8 (CTAF)</b> |
|----------------------------|--|-----------------------|-------------------------------|



|           |           |
|-----------|-----------|
| ELEV 1183 | TDZE 1183 |
|-----------|-----------|

HIRL Rwy 12-30  
 REIL Rws 2 and 20  
 MIRL Rwy 2-20

| CATEGORY      | A      | B           | C            | D           |
|---------------|--------|-------------|--------------|-------------|
| LPV DA        |        | 1383-½      | 200 (200-½)  |             |
| LNAV/ VNAV DA |        | 1490-½      | 307 (400-½)  |             |
| LNAV MDA      | 1560-½ | 377 (400-½) | 1560-⅝       | 377 (400-⅝) |
| CIRCLING      | 1640-1 | 457 (500-1) | 1640-1½      | 1740-2      |
|               |        |             | 457 (500-1½) | 557 (600-2) |

NC-1, 08 OCT 2020 to 05 NOV 2020

NC-1, 08 OCT 2020 to 05 NOV 2020