

VOR/DME MML 111.0 Chan 47	APP CRS 130°	Rwy Idg TDZE Apt Elev	7221 1182 1182
--	------------------------	-----------------------------	---

VOR RWY 12

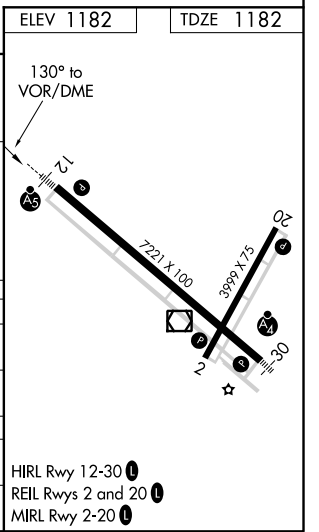
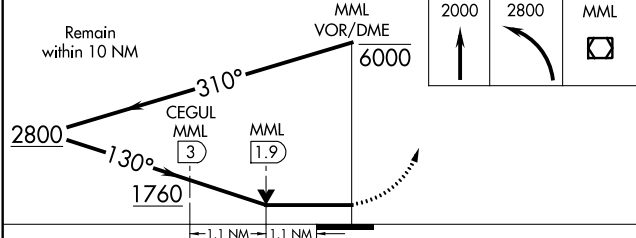
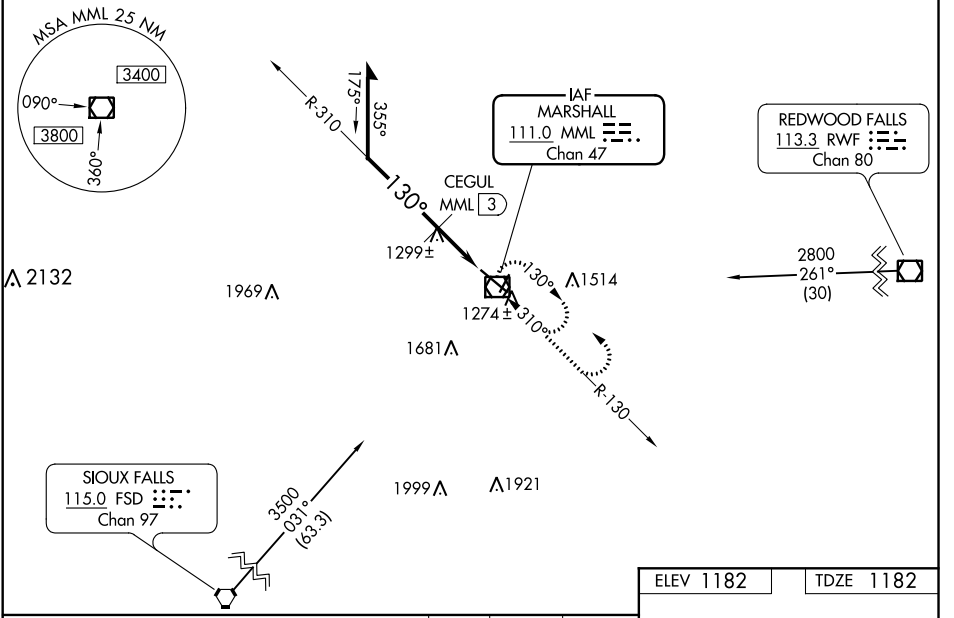
SOUTHWEST MINNESOTA RGNL MARSHALL/RYAN FIELD (MML)

NA For inoperative MALS, increase CEGUL fix minimums S-12 Cat D visibility to 1 1/4 mile. When local altimeter setting not received, use Tracy Muni altimeter setting and increase all MDAs 60 feet and S-12 Cat C/D visibility 1/4 mile; increase Circling Cat C visibility 1/4 mile. Increase CEGUL fix minimums S-12 Cat C visibility to 3/4 mile. VDP NA when using Tracy Muni altimeter setting.



MISSED APPROACH: Climb to 2000, then climbing left turn to 2800 direct MML VOR/DME and hold.

AWOS-3PT 120.150	MINNEAPOLIS CENTER 127.1 290.2	GCO 121.725	UNICOM 122.8 (CTAF)
----------------------------	--	-----------------------	-------------------------------



CATEGORY	A		B		C		D	
	1	2	1	2	1	2	1	2
S-12	1760-1/2	578 (600-1/2)	1760-1	578 (600-1)	1760-1	578 (600-1)	1760-1 1/4	578 (600-1 1/4)
CIRCLING	1760-1	578 (600-1)	1760-1	578 (600-1)	1760-1 1/2	578 (600-1 1/2)	1760-2	578 (600-2)
CEGUL FIX MINIMUMS								
S-12	1560-1/2 378 (400-1/2)				1560-1 378 (400-1)			
CIRCLING	1640-1 458 (500-1)				1640-1 1/2 458 (500-1 1/2)			

HIRL Rwy 12-30
REIL Rws 2 and 20
MIRL Rwy 2-20

VOR RWY 12

NC-1, 08 OCT 2020 to 05 NOV 2020

NC-1, 08 OCT 2020 to 05 NOV 2020