

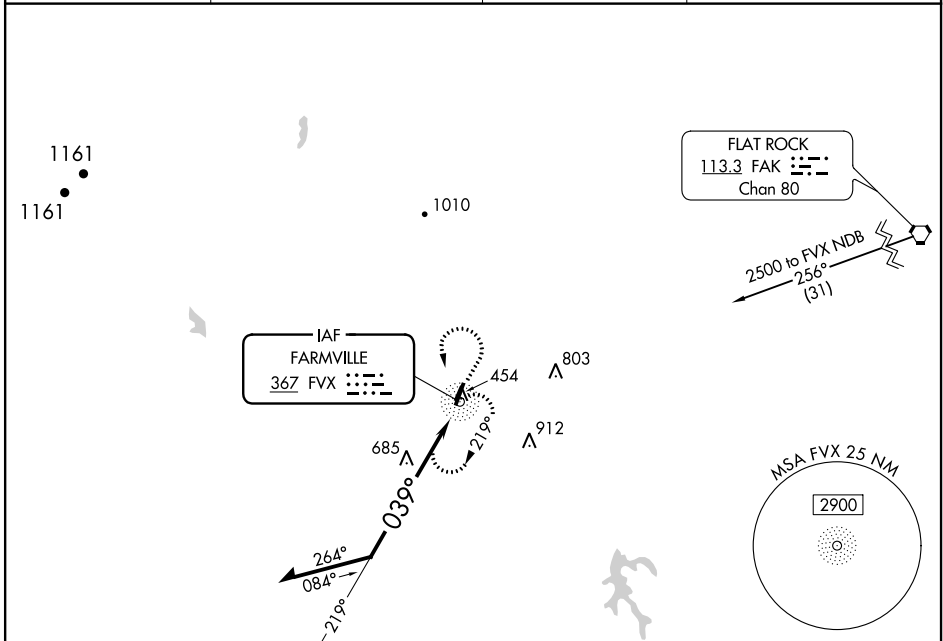
NDB FVX <b>367</b>	APP CRS <b>039°</b>	Rwy Idg TDZE Apt Elev	<b>4400</b> <b>410</b> <b>416</b>
-----------------------	------------------------	-----------------------------	---

**NDB RWY 3**  
FARMVILLE RGNL (FVX)

**⚠** When local altimeter setting not received, use Lynchburg altimeter setting and increase all MDAs 160 feet increase Cats A/B and Circling Cat A/B visibility 1/4 mile, increase Cat C and Circling Cat C visibility 1/2 mile. Straight-in/Circling Rwy 3 procedure NA at night.

**⚠** MISSED APPROACH: Climb to 2300 then climbing left turn to 2500 direct FVX NDB and hold.

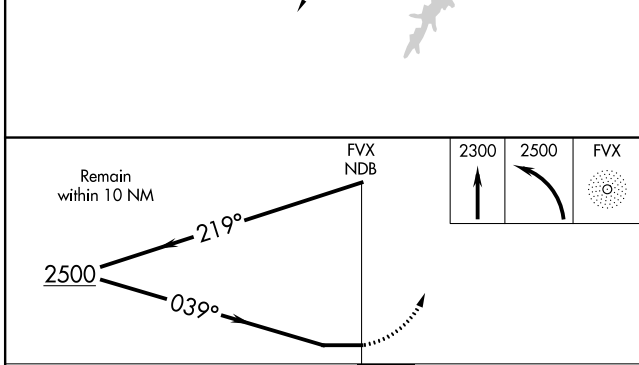
AWOS-3 <b>132.725</b>	ROANOKE APP CON <b>135.0 254.325</b>	GCO <b>135.075</b>	UNICOM <b>122.8 (CTAF)</b>
--------------------------	---	-----------------------	-------------------------------



NE-3, 08 OCT 2020 to 05 NOV 2020

NE-3, 08 OCT 2020 to 05 NOV 2020

ELEV 416	TDZE 410
----------	----------



CATEGORY	A	B	C	D
S-3	1220-1 810 (900-1)	1220-1¼ 810 (900-1¼)	1220-2½ 810 (900-2½)	NA
CIRCLING	1220-1 804 (900-1)	1220-1¼ 804 (900-1¼)	1220-2½ 804 (900-2½)	NA

