

WAAS CH 49017 W03A	APP CRS 029°	Rwy Idg 4400 TDZE 410 Apt Elev 416
--	------------------------	---

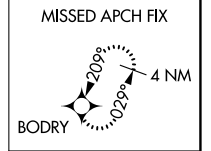
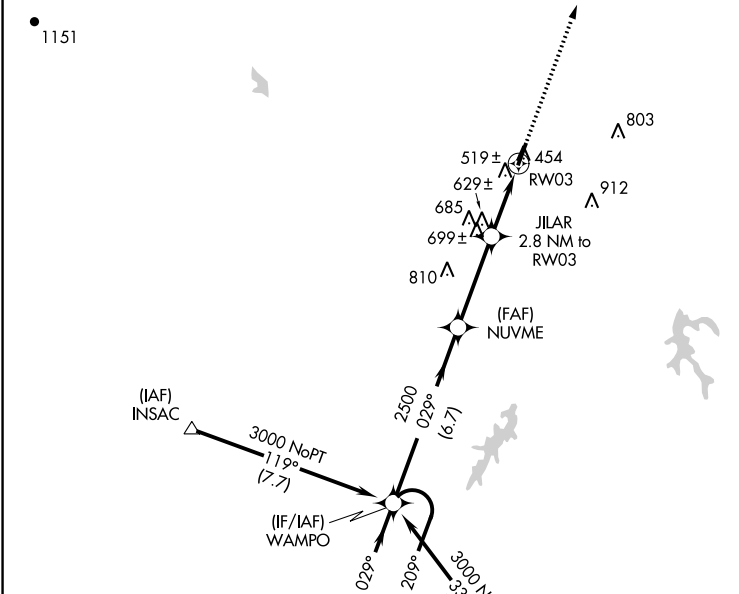
RNAV (GPS) RWY 3

FARMVILLE RGNL (FVX)

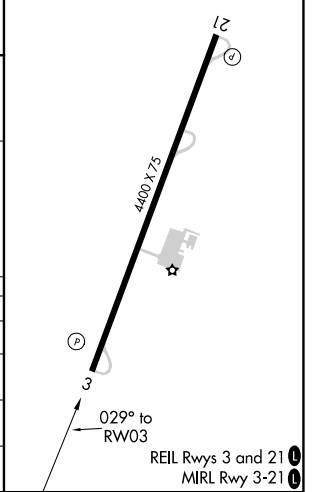
⚠ Baro-VNAV NA when using Lynchburg altimeter setting. For uncompensated Baro-VNAV systems, LNAV/VNAV NA below -15°C (5°F) or above 54°C (130°F). Straight-in/Circling Rwy 3 procedure NA at night. DME/DME RNP-0.3 NA. When local altimeter setting not received, use Lynchburg altimeter setting and increase all DA 158 feet and all MDA 160 feet. Increase LPV and LNAV/VNAV visibility ½ mile all Cats; LNAV Cat C visibility ⅓ mile and Circling Cat C visibility ¼ mile. Helicopter visibility reduction below 1 SM NA.

MISSED APPROACH:
Climb to 3000 direct BODRY and hold.

AWOS-3 132.725	ROANOKE APP CON 135.0 254,325	GCO 135.075	UNICOM 122.8 (CTAF) 0
--------------------------	---	-----------------------	---------------------------------



ELEV 416	TDZE 410
----------	----------



CATEGORY	A	B	C	D
LPV DA	720-1 310 (400-1)			NA
LNAV/VNAV DA	812-1 ⅜ 402 (400-1 ⅜)			NA
LNAV MDA	880-1 470 (500-1)		880-1 ⅜ 470 (500-1 ⅜)	NA
CIRCLING	900-1 484 (500-1)		1000-1 ½ 584 (600-1 ½)	NA

NE-3, 08 OCT 2020 to 05 NOV 2020

NE-3, 08 OCT 2020 to 05 NOV 2020