

WAAS CH 56621 W13A	APP CRS 129°	Rwy Idg TDZE Apt Elev 4691 867 867
--	------------------------	--

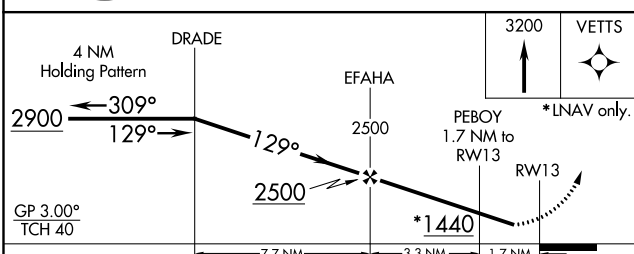
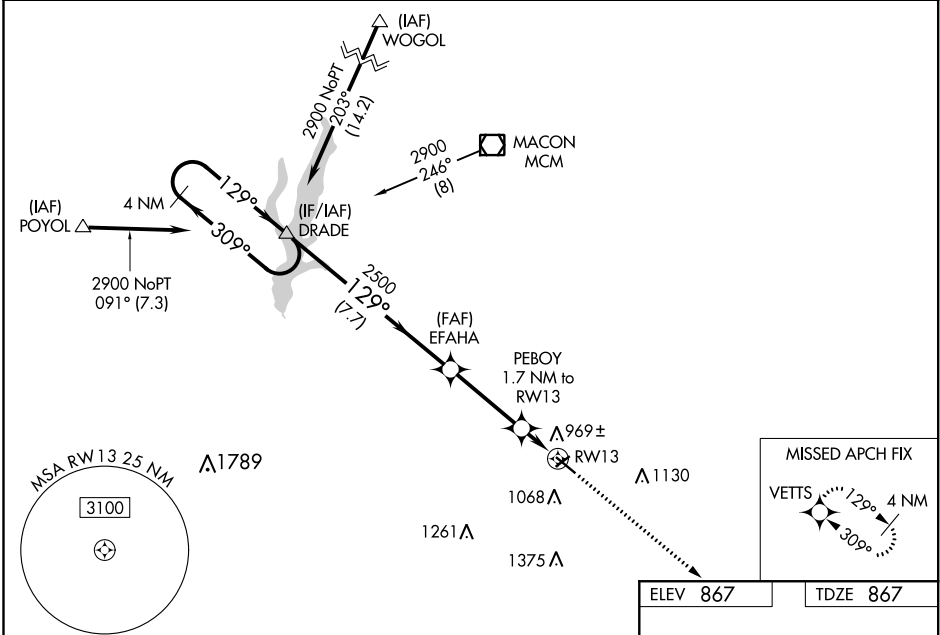
RNAV (GPS) RWY 13

OMAR N BRADLEY (MBY)

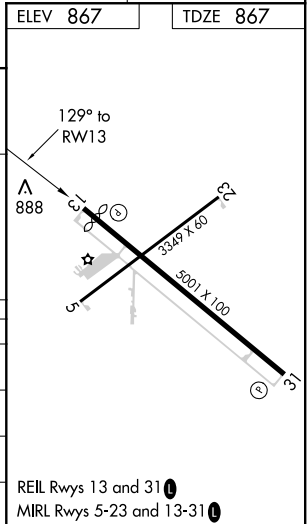
V Circling to Rwy 5 NA at night. Baro-VNAV NA when using Columbia altimeter setting. For uncompensated Baro-VNAV systems, LNAV/VNAV NA below -16°C (4°F) or above 54°C (130°F).
Δ NA When VGSi inop, procedure NA at night. DME/DME RNP-0.3 NA. Visibility reduction by helicopters NA. When local altimeter setting not received, use Columbia altimeter setting and increase all DA 95 feet and all MDA 100 feet, increase LPV visibility ½ mile all Cats, LNAV/VNAV visibility ¼ mile all Cats, LNAV Cat C visibility ⅓ mile and Circling Cat C visibility ¼ mile.

MISSED APPROACH:
Climb to 3200 direct VETTS and hold.

AWOS-3P 120.025	KANSAS CITY CENTER 125.25 235.975	UNICOM 122.7 (CTAF) ①
---------------------------	---	---------------------------------



CATEGORY	A	B	C	D
LPV DA		1117-1 250 (300-1)		NA
LNAV/VNAV DA		1142-1 275 (300-1)		NA
LNAV MDA		1220-1 353 (400-1)		NA
CIRCLING	1420-1 553 (600-1)		1480-1¾ 613 (700-1¾)	NA



NC-3, 08 OCT 2020 to 05 NOV 2020

NC-3, 08 OCT 2020 to 05 NOV 2020