

WAAS CH 61321 W31A	APP CRS 309°	Rwy Idg TDZE Apt Elev	5001 867 867
--	------------------------	-----------------------------	---

RNAV (GPS) RWY 31

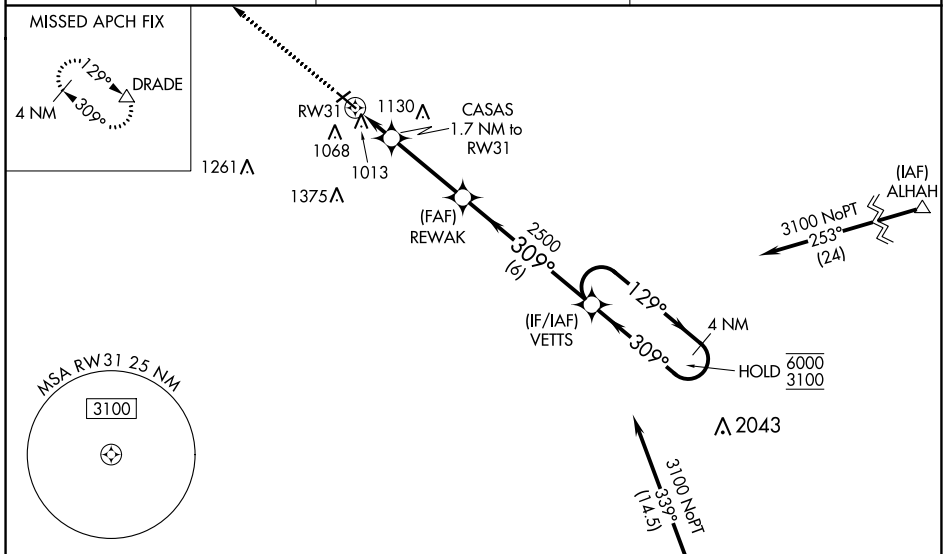
OMAR N BRADLEY (MBY)

RNP APCH.

NA Circling to Rwy 5, 23 NA at night. Rwy 31 helicopter visibility reduction below $\frac{3}{4}$ SM NA. Baro-VNAV NA when using Columbia altimeter setting. For uncompensated Baro-VNAV systems, LNAV/VNAV NA below -16°C or above 54°C. VDP NA when using Columbia altimeter setting. When local altimeter setting not received, use Columbia altimeter setting: increase LPV DA to 1212 feet and all visibilities $\frac{1}{8}$ SM; increase LNAV/VNAV DA to 1278 feet and all visibilities $\frac{1}{4}$ SM; increase all MDA 100 feet and visibility Cat C $\frac{1}{4}$ SM.

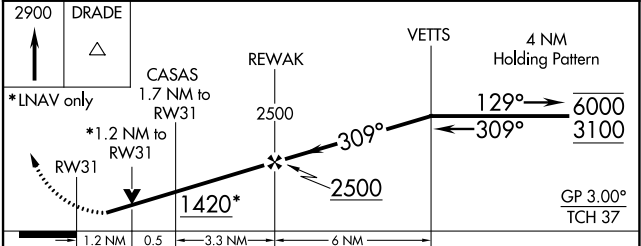
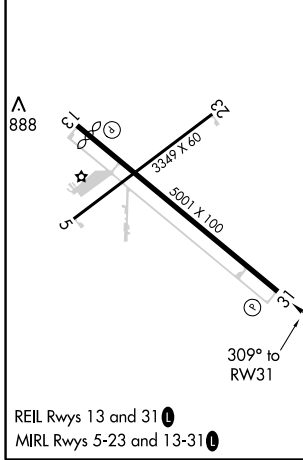
MISSED APPROACH:
Climb to 2900 direct
DRADE and hold.

AWOS-3P 120.025	KANSAS CITY CENTER 125.25 235.975	UNICOM 122.7 (CTAF) 0
---------------------------	---	---------------------------------



ELEV 867	TDZE 867
-----------------	-----------------

Procedure NA for arrival on HLV VORTAC
airway radials 270 CW 036.



CATEGORY	A	B	C	D
LPV DA	1117- $\frac{7}{8}$	250 (300- $\frac{7}{8}$)		NA
LNAV/VNAV DA	1183- $\frac{7}{8}$	316 (400- $\frac{7}{8}$)		NA
LNAV MDA	1280-1	413 (500-1)	1280-1 $\frac{1}{8}$ 413 (500-1 $\frac{1}{8}$)	NA
CIRCLING	1420-1	553 (600-1)	1480-1 $\frac{3}{4}$ 613 (700-1 $\frac{3}{4}$)	NA

NC-3, 08 OCT 2020 to 05 NOV 2020

NC-3, 08 OCT 2020 to 05 NOV 2020