

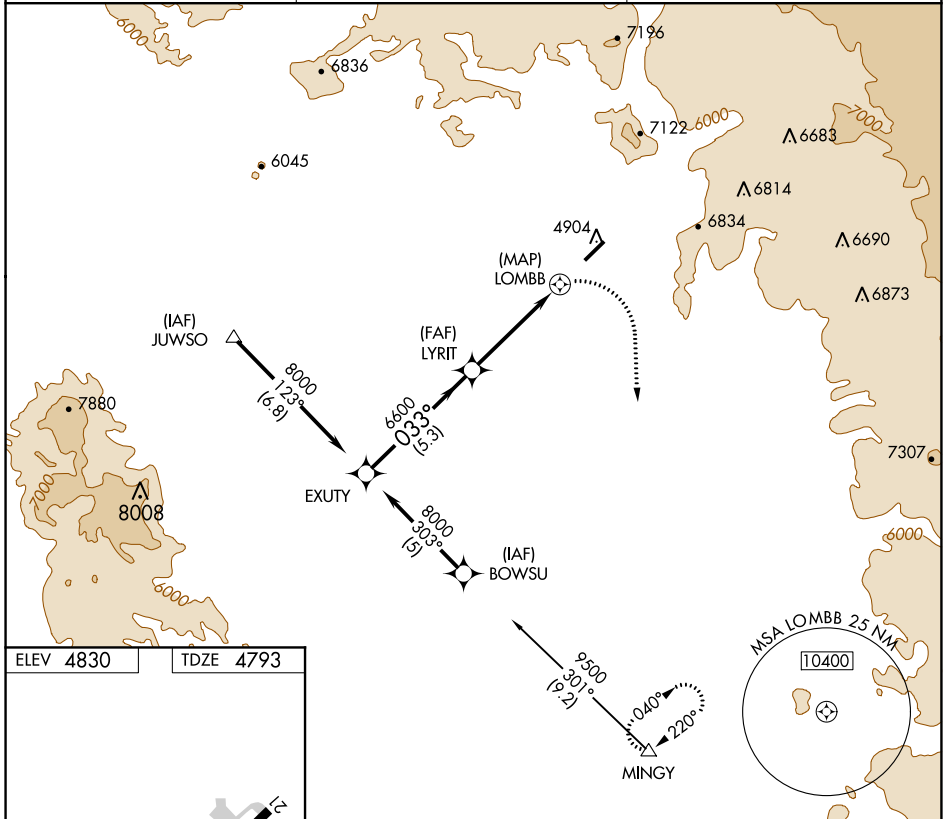
GPS RWY 3 SEDONA (SE/Z)

APP CRS	Rwy Idg	5132
033°	TDZE	4793
	Apt Elev	4830

▼ When local altimeter not received, procedure not authorized.
▲ NA Cat D circling not authorized northwest of Rwy 3-21.
 Circling Rwy 21 NA at night.

MISSED APPROACH: Climbing right turn to 12000 direct MINGY WP and hold.

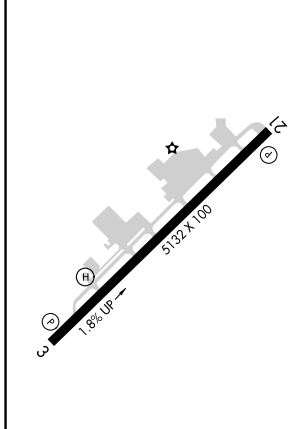
AWOS-3PT 118.525	PHOENIX APP CON 126.375 236.775	UNICOM 123.0 (CTAF) 📶
----------------------------	---	--



SW-4, 08 OCT 2020 to 05 NOV 2020

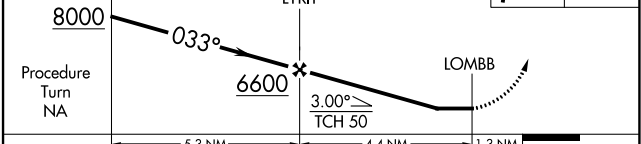
SW-4, 08 OCT 2020 to 05 NOV 2020

ELEV 4830	TDZE 4793
-----------	-----------



📶 MRL Rwy 3-21 📶
📶 REL Rwy 3 and 21 📶

EXUTY VGS1 and descent angles not coincident (VGS1 Angle 3.00/TCH 43). 12000 MINGY ▲



CATEGORY	A	B	C	D
S-3	6140-1½ 1347 (1400-1½)	6240-1½ 1447 (1500-1½)	6560-3	1767 (1800-3)
📶 CIRCLING	6140-1½ 1310 (1400-1½)	6240-1½ 1410 (1500-1½)	NA	