

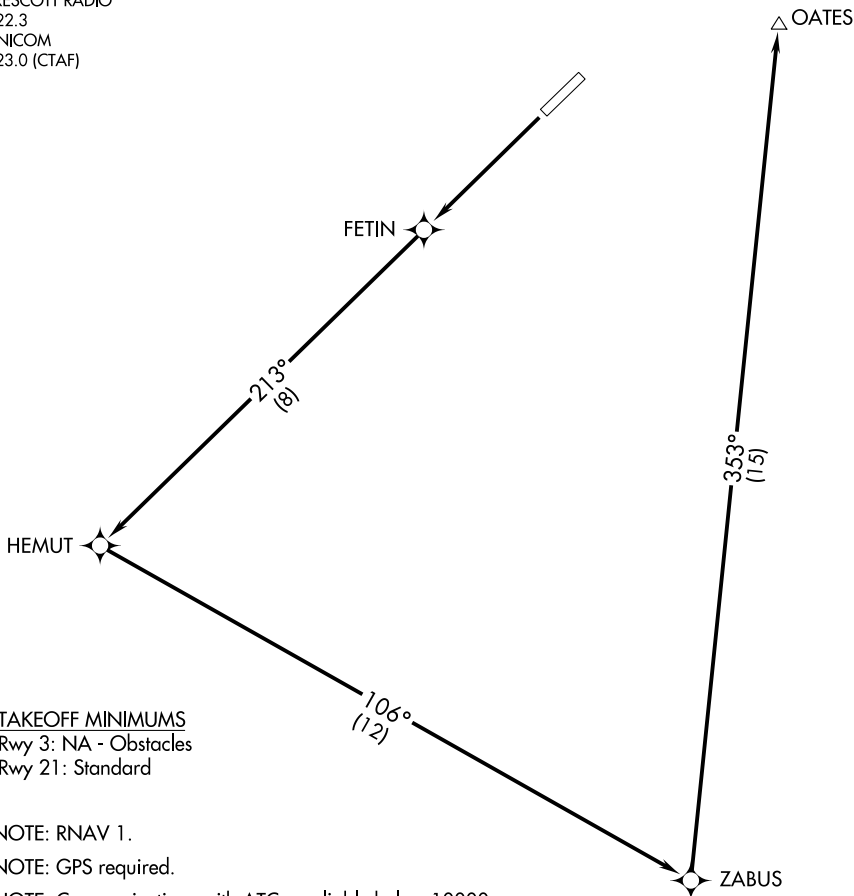
(OATES1.OATES) 16259

OATES ONE DEPARTURE (OBSTACLE) (RNAV)

SL-6169 (FAA)

SEDONA (SE/Z)
SEDONA, ARIZONA

PHOENIX DEP CON
126.375 236.775
PRESCOTT RADIO
122.3
UNICOM
123.0 (CTAF)



TAKEOFF MINIMUMS

Rwy 3: NA - Obstacles
Rwy 21: Standard

- NOTE: RNAV 1.
- NOTE: GPS required.
- NOTE: Communications with ATC unreliable below 10000.

TAKEOFF OBSTACLE NOTES

Rwy 21: Trees beginning 1642' from DER, 240' right of centerline, up to 100' AGL/4786' MSL.
Bush 147' from DER, 202' left of centerline, 5' AGL/4740' MSL.

NOTE: Chart not to scale

DEPARTURE ROUTE DESCRIPTION

TAKEOFF RUNWAY 21: Climb direct FETIN then via 213° track/8 NM to HEMUT, then left turn via 106° track/12 NM to ZABUS, then left turn via 353° track/15 NM to OATES. Maintain 10500 or assigned altitude.

SW-4, 08 OCT 2020 to 05 NOV 2020

SW-4, 08 OCT 2020 to 05 NOV 2020

OATES ONE DEPARTURE (OBSTACLE) (RNAV)

(OATES1.OATES) 10APR08

SEDONA, ARIZONA
SEDONA (SE/Z)