

LOC/DME I-CFQ <b>110.35</b> Chan 40 (Y)	APP CRS <b>101°</b>	Rwy ldg TDZE Apt Elev <b>4001</b> <b>928</b> <b>928</b>
---	------------------------	--

# LOC/DME RWY 10

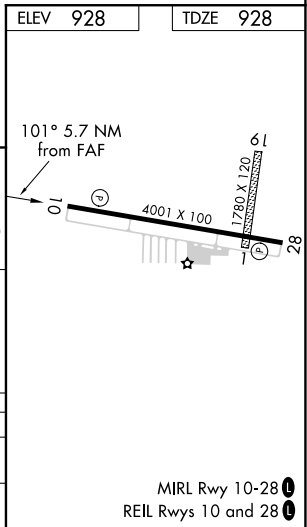
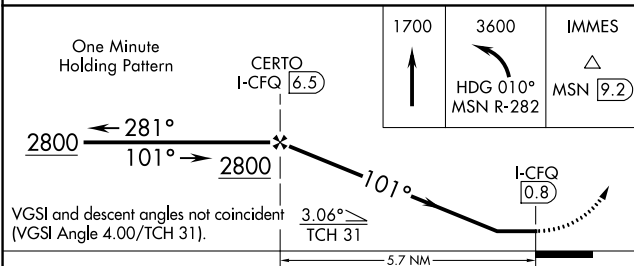
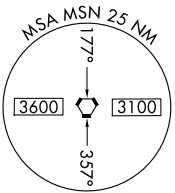
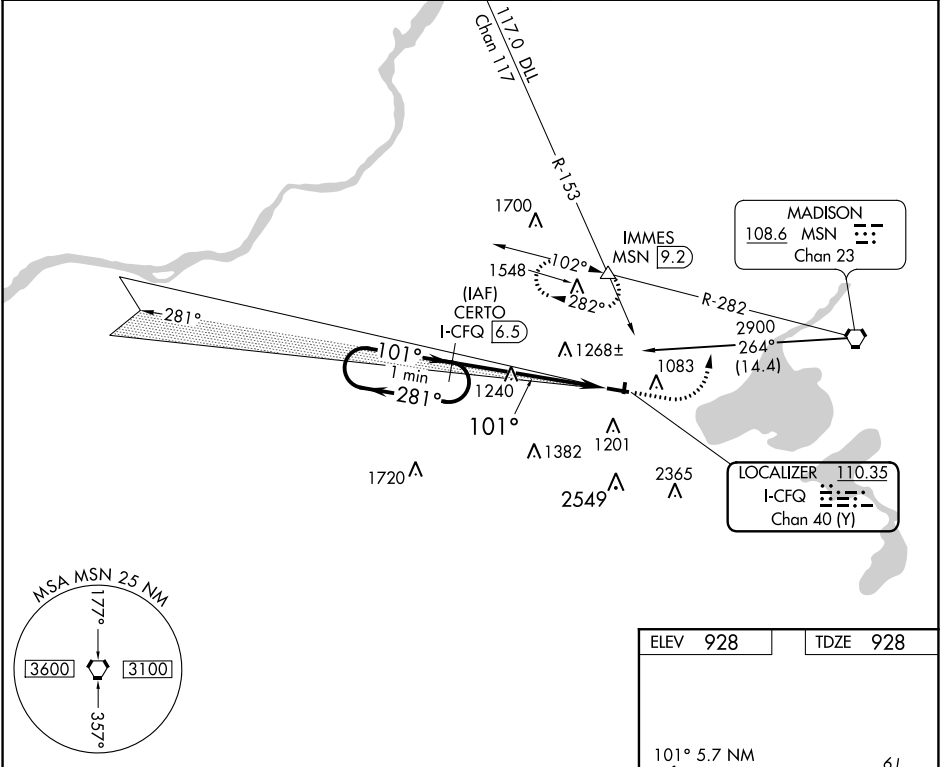
MIDDLETON MUNI - MOREY FIELD (C29)

**▼** Helicopter visibility reduction below 3/4 SM NA. Use Dane County Rgnl-Truax Field altimeter setting, when not received use Baraboo Wisconsin Dells altimeter setting and increase all MDA 60 feet, and increase S-10 Cat C visibility 1/4 mile. Circling NA to Rwys 1 and 19.

**▲ NA**

**MISSED APPROACH:** Climb to 1700 then climbing left turn to 3600 via heading 010° and MSN VORTAC R-282 to IMMES Int/MSN 9.2 DME and hold, continue climb-in-hold to 3600.

AWOS-3 <b>118.675</b>	MSN ASOS <b>124.65 278.3</b>	MADISON APP CON★ <b>135.45 343.7</b>	GCO <b>121.725</b>	UNICOM <b>123.0 (CTAF) 0</b>
--------------------------	---------------------------------	---	-----------------------	---------------------------------



CATEGORY	A	B	C	D
S-10	1580-1	652 (700-1)	1580-1 3/4 652 (700-1 3/4)	NA
CIRCLING	1580-1 652 (700-1)	1600-1 672 (700-1)	1600-2 672 (700-2)	NA

EC-3, 08 OCT 2020 to 05 NOV 2020

EC-3, 08 OCT 2020 to 05 NOV 2020