

WAAS CH 82404 W28A	APP CRS 281°	Rwy Idg TDZE Apt Elev	4001 928 928
--	------------------------	-----------------------------	---

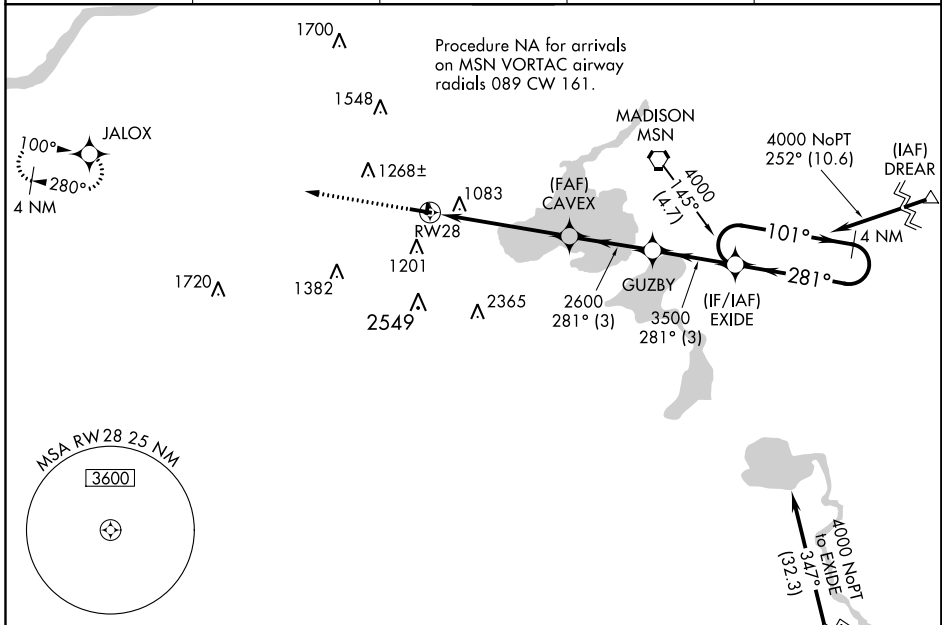
RNAV (GPS) RWY 28

MIDDLETON MUNI - MOREY FIELD (C29)

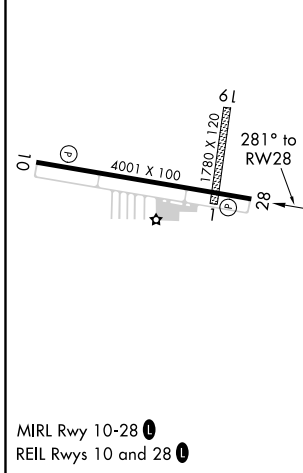
Baro-VNAV NA. DME/DME RNP-0.3 NA. Helicopter visibility reduction below 3/4 SM NA. Use Dane County Rgnl-Truax Field altimeter setting, when not received use Baraboo Wisconsin Dells altimeter setting and increase all DA 43 feet and all MDA 60 feet, increase LNAV/VNAV all Cats and LNAV Cat C visibility 1/4 mile. Circling NA to Rwy's 1 and 19.

MISSED APPROACH: Climb to 4000 direct JALOX and hold.

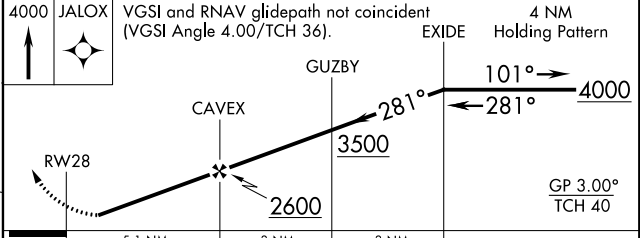
AWOS-3 118.675	MSN ASOS 124.65 278.3	MADISON APP CON★ 135.45 343.7	GCO 121.725	UNICOM 123.0 (CTAF)
--------------------------	---------------------------------	---	-----------------------	-------------------------------



ELEV 928	TDZE 928
-----------------	-----------------



Procedure NA for arrivals at JLV VOR/DME via V97 southeast bound.



CATEGORY	A	B	C	D
LPV DA	1326-1½	398 (400-1½)		NA
LNAV/VNAV DA	1442-1¾	514 (600-1¾)		NA
LNAV MDA	1480-1	552 (600-1)	1480-1½ 552 (600-1½)	NA
CIRCLING	1560-1 632 (700-1)	1600-1 672 (700-1)	1600-2 672 (700-2)	NA

EC-3, 08 OCT 2020 to 05 NOV 2020

EC-3, 08 OCT 2020 to 05 NOV 2020