

VORTAC MSN <b>108.6</b> Chan 23	APP CRS <b>254°</b>	Rwy Idg TDZE Apt Elev	<b>4001</b> <b>928</b> <b>928</b>
---------------------------------------	------------------------	-----------------------------	---

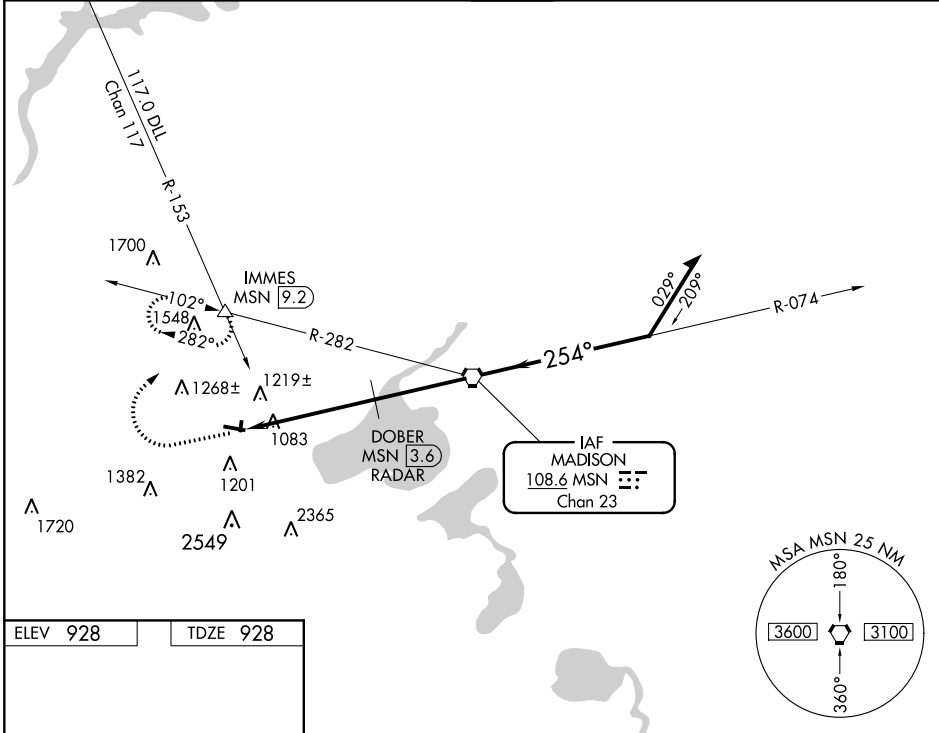
# VOR RWY 28

MIDDLETON MUNI - MOREY FIELD (C29)

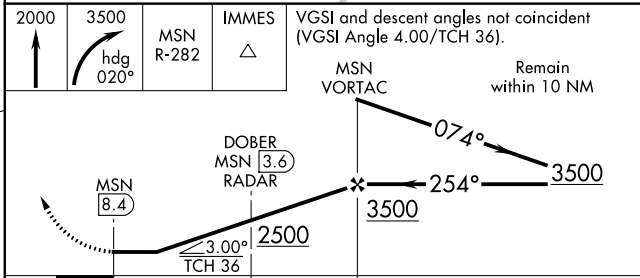
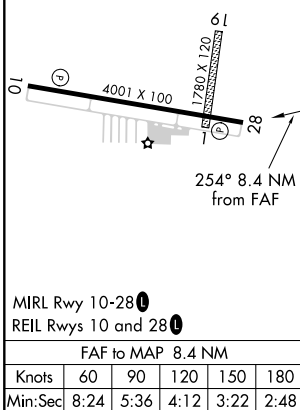
**NA** Use Dane County Rgnl-Truax Field altimeter setting, if not received use Baraboo Wisconsin Dells altimeter setting and increase all MDAs 60 feet. **RADAR or DME REQUIRED.** Circling NA to Rwy's 1 and 19. Rwy 28 helicopter visibility reduction below 3/4 SM NA.

**MISSED APPROACH:** Climb to 2000 then climbing right turn to 3500 via heading 020° and MSN R-282 to IMMES INT/9.2 DME and hold.

AWOS-3 <b>118.675</b>	MSN ASOS <b>124.65 278.3</b>	MADISON APP CON* <b>135.45 343.7</b>	GCO <b>121.725</b>	UNICOM <b>123.0 (CTAF) 0</b>
--------------------------	---------------------------------	---	-----------------------	---------------------------------



ELEV 928	TDZE 928
----------	----------



CATEGORY	A	B	C	D
S-28	1500-1	572 (600-1)	1500-1½ 572 (600-1½)	NA
CIRCLING	1560-1 632 (700-1)	1600-1 672 (700-1)	1600-2 672 (700-2)	NA