

RNAV (GPS) RWY 36

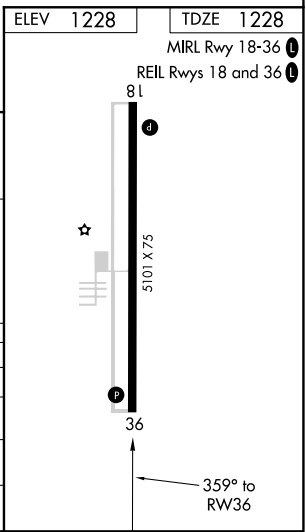
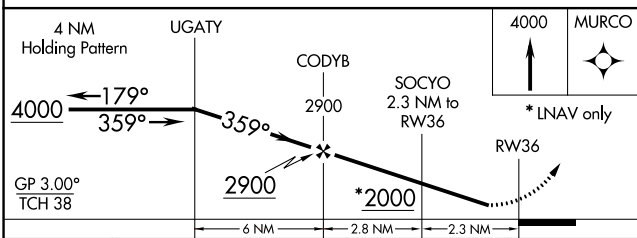
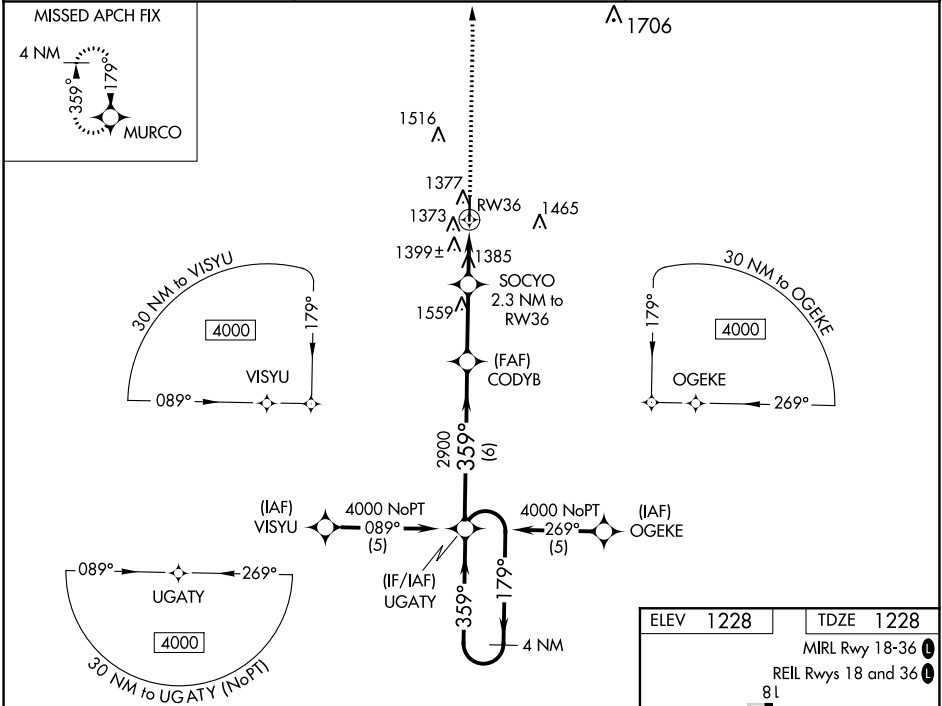
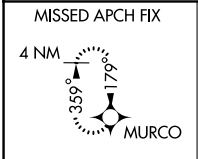
WEST PLAINS RGNL (UNO)

WAAS CH 40202 W36A	APP CRS 359°	Rwy Idg TDZE Apt Elev	5101 1228 1228
--	------------------------	-----------------------------	---

⚠ When VGS1 Inop, circling Rwy 18 NA at night. Baro-VNAV NA when using Mountain Home altimeter setting. DME/DME RNP-0.3 NA. Visibility reduction by helicopters NA. When local altimeter setting not received, use Mountain Home, AR altimeter setting and increase all DA/MDA 140 feet, increase LPV all Cats visibility ½ mile, LNAV/VNAV all Cats visibility ¼ mile and LNAV and Circling Cat C visibility ¼ mile. For uncompensated Baro-VNAV systems, LNAV/VNAV NA below -17°C (2°F) or above 54°C (130°F).

MISSED APPROACH:
Climb to 4000 direct MURCO and hold.

ASOS 123.825	MEMPHIS CENTER 120.075 289.4	UNICOM 122.8 (CTAF) ①
------------------------	--	---------------------------------



CATEGORY	A	B	C	D
LPV DA	1520-1 292 (300-1)			NA
LNAV/VNAV DA	1713-1¾ 485 (500-1¾)			NA
LNAV MDA	1660-1 432 (500-1)	1660-1¼ 432 (500-1¼)		NA
CIRCLING	1700-1 472 (500-1)	1720-1½ 492 (500-1½)		NA

NC-3, 08 OCT 2020 to 05 NOV 2020

NC-3, 08 OCT 2020 to 05 NOV 2020