

WAAS CH <b>87124</b> <b>W34A</b>	APP CRS <b>344°</b>	Rwy Idg TDZE Apt Elev	<b>3417</b> <b>1097</b> <b>1101</b>
--	------------------------	-----------------------------	---

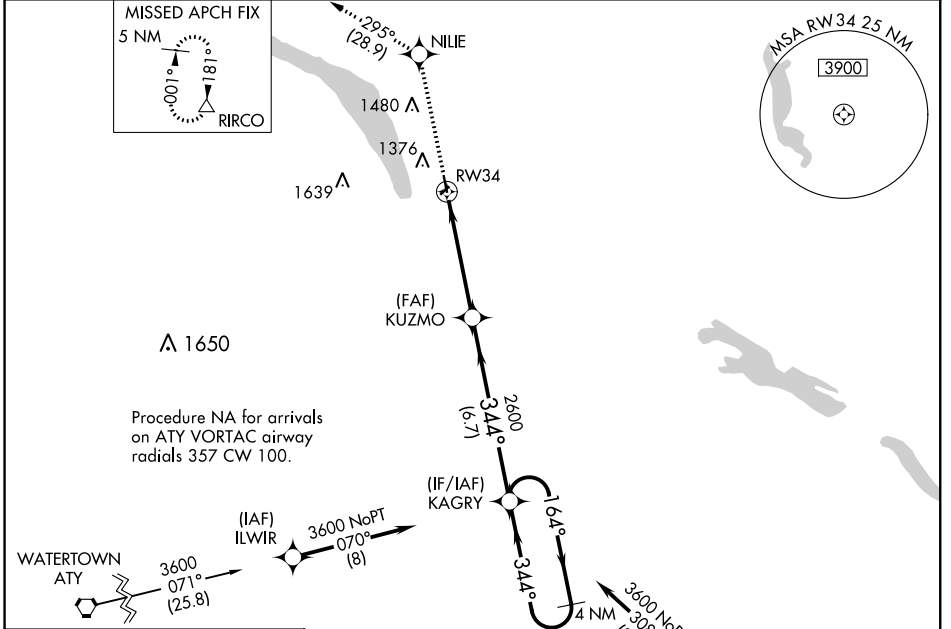
# RNAV (GPS) RWY 34

ORTONVILLE MUNI-MARTINSON FIELD (VVV)

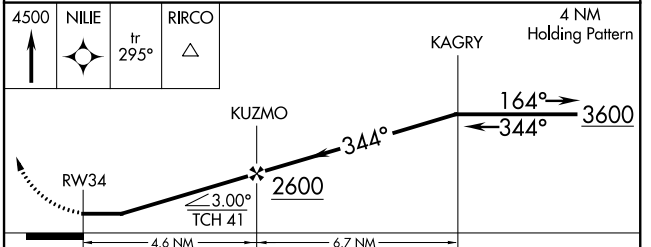
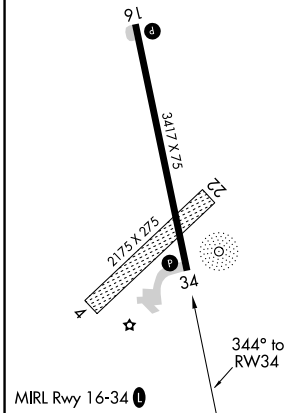
**⚠** DME/DME RNP-0.3 NA. Visibility reduction by helicopters NA. Procedure NA at night. When local altimeter setting not received, use Appleton altimeter setting and increase all MDA 60 feet, increase LP and LNAV Cat C visibility to 1 3/8 mile and Circling Cat C visibility to 2 miles.

**MISSED APPROACH:** Climb to 4500 direct NILIE and on track 295° to RIRCO and hold.

AWOS-3 <b>119.225</b>	MINNEAPOLIS CENTER <b>128.5 306.2</b>	GCO <b>121.725</b>	UNICOM <b>122.8 (CTAF) 0</b>
--------------------------	--	-----------------------	---------------------------------



ELEV 1101	TDZE 1097
-----------	-----------



CATEGORY	A	B	C	D
LP MDA	1520-1	423 (500-1)	1520-1 1/4 423 (500-1 1/4)	NA
LNAV MDA	1520-1	423 (500-1)	1520-1 1/4 423 (500-1 1/4)	NA
CIRCLING	1740-1	639 (700-1)	1740-1 3/4 639 (700-1 3/4)	NA