

WAAS CH 99503 W27A	APP CRS 270°	Rwy Idg TDZE Apt Elev	6500 17 17
--	------------------------	-----------------------------	---------------------------------------

RNAV (GPS) RWY 27

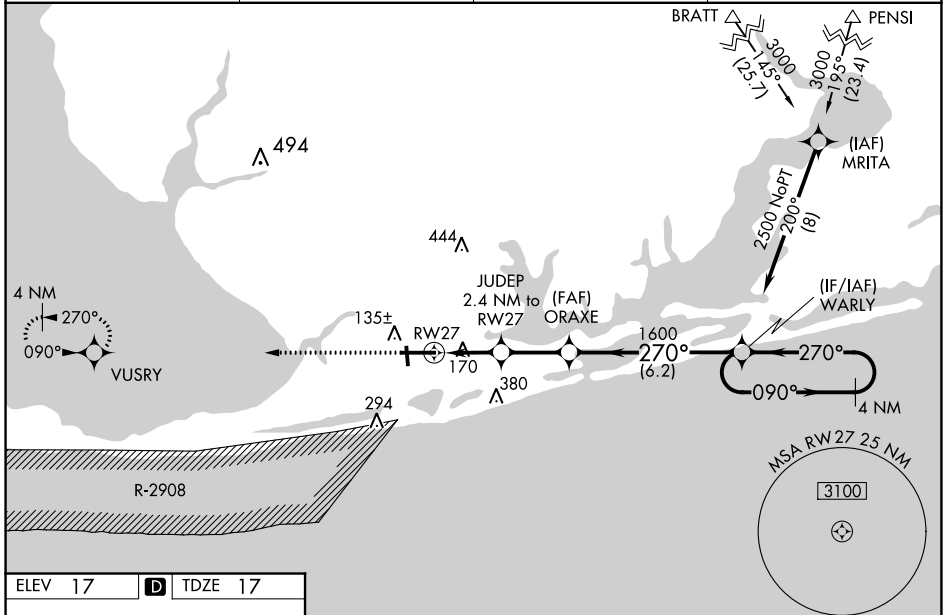
JACK EDWARDS NATIONAL (JKA)

For uncompensated Baro-VNAV systems, LNAV/VNAV NA below -15°C (5°F) or above 54°C (130°F). Baro-VNAV and VDP NA when using Pensacola Intl altimeter setting. Circling Rwy 17, 35 NA at night. DME/DME RNP-0.3 NA. When local altimeter setting not received, use Pensacola Intl altimeter setting and increase LPV DA to 295 feet; increase LNAV/VNAV DA to 559 feet and all visibilities ¼ SM; increase all MDAs 80 feet and visibility Cats C and D ¼ SM. For inop ALS, increase LNAV Cat C/D visibility to 1½ SM. For inop ALS, when using Pensacola Intl altimeter setting minimums, increase LPV all Cats visibility to ¾ SM, increase LNAV Cats C/D visibility to 1½ SM.

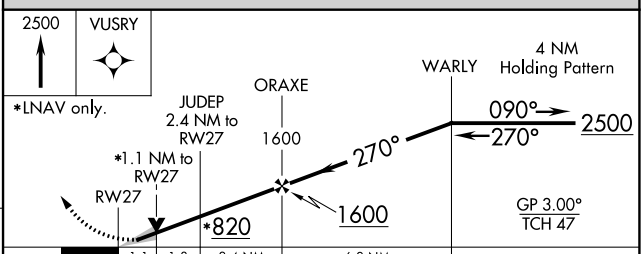
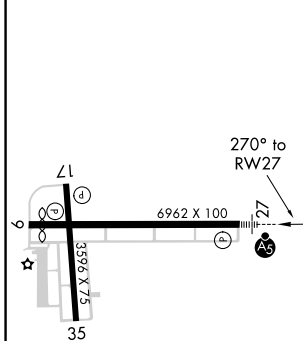


MISSED APPROACH:
Climb to 2500 direct
VUSRY and hold.

AWOS-3PT 134.525	PENSACOLA APP CON 120.65 270.8	CLNC DEL 124.55	UNICOM 122.7 (CTAF)
----------------------------	--	---------------------------	-------------------------------



ELEV 17	D	TDZE 17
---------	----------	---------



CATEGORY	A	B	C	D
LPV DA		217-½	200 (200-½)	
LNAV/VNAV DA		481-1⅛	464 (500-1⅛)	
LNAV MDA	420-½	403 (500-½)	420-¾	403 (500-¾)
C CIRCLING	480-1	463 (500-1)	740-2 723 (800-2)	740-2¼ 723 (800-2¼)

SE-4, 08 OCT 2020 to 05 NOV 2020

SE-4, 08 OCT 2020 to 05 NOV 2020