

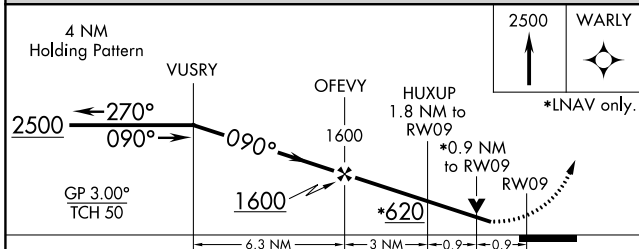
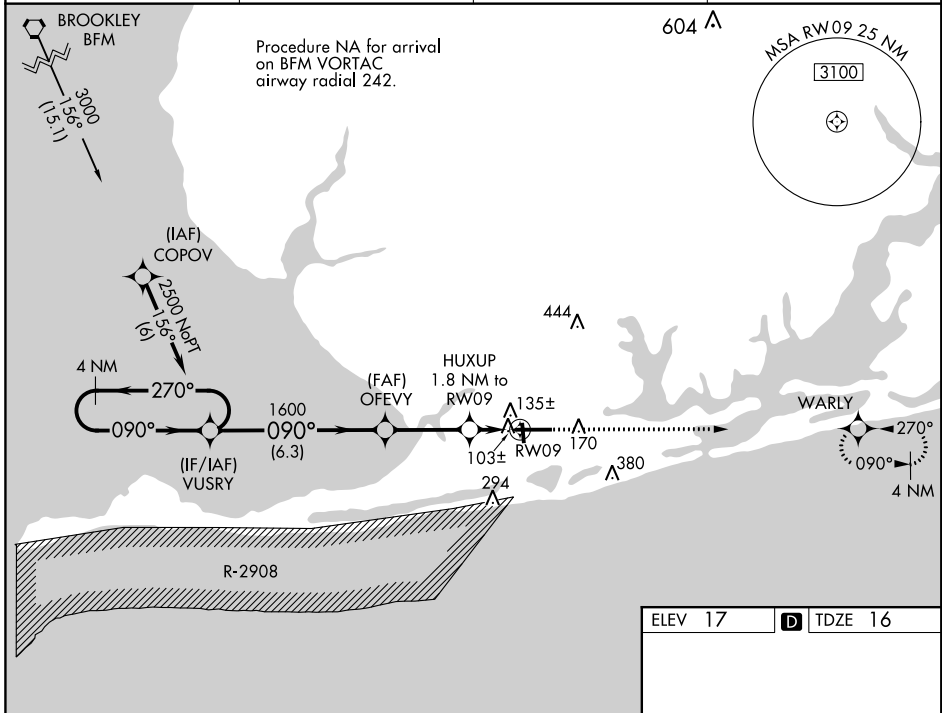
WAAS CH <b>86503</b> <b>W09A</b>	APP CRS <b>090°</b>	Rwy Idg TDZE Apt Elev	<b>6500</b> <b>16</b> <b>17</b>
--	------------------------	-----------------------------	---------------------------------------

# RNAV (GPS) RWY 9

JACK EDWARDS NATIONAL (JKA)

For uncompensated Baro-VNAV systems, LNAV/VNAV NA below -15°C (5°F) or above 54°C (130°F).  
**▼** Baro-VNAV and VDP NA when using Pensacola Intl altimeter setting. Circling Rwy 17, 35 NA at night. Rwy 9 helicopter visibility reduction below 3/4 SM NA. DME/DME RNP-0.3 NA. When local altimeter setting not received, use Pensacola Intl altimeter setting and increase LPV DA to 388 feet, LNAV/VNAV DA to 362 feet, and all visibilities 1/2 SM; increase all MDAs 80 feet and visibility Cats C and D 1/4 SM.  
**▲** MISSED APPROACH: Climb to 2500 direct WARLY and hold.

AWOS-3PT <b>134.525</b>	PENSACOLA APP CON <b>120.65 270.8</b>	CLNC DEL <b>124.55</b>	UNICOM <b>122.7 (CTAF) 0</b>
----------------------------	--	---------------------------	---------------------------------



CATEGORY	A	B	C	D
LPV DA		310-1	294 (300-1)	
LNAV/VNAV DA		284-7/8	268 (300-7/8)	
LNAV MDA		360-1	344 (400-1)	
<b>C</b> CIRCLING	480-1	463 (500-1)	740-2 723 (800-2)	740-2 1/4 723 (800-2 1/4)

ELEV 17	<b>D</b> TDZE 16
---------	------------------

MIRL Rwy 17-35 **0**  
HIRL Rwy 9-27 **0**

SE-4, 08 OCT 2020 to 05 NOV 2020

SE-4, 08 OCT 2020 to 05 NOV 2020