

|   |                        |                             |   |
|---|------------------------|-----------------------------|---|
| VORTAC GSO<br><b>116.2</b><br>Chan <b>109</b> | APP CRS<br><b>334°</b> | Rwy Idg<br>TDZE<br>Apt Elev | <b>2725</b><br><b>631</b><br><b>631</b> |
|---|------------------------|-----------------------------|---|

# VOR/DME or GPS RWY 34

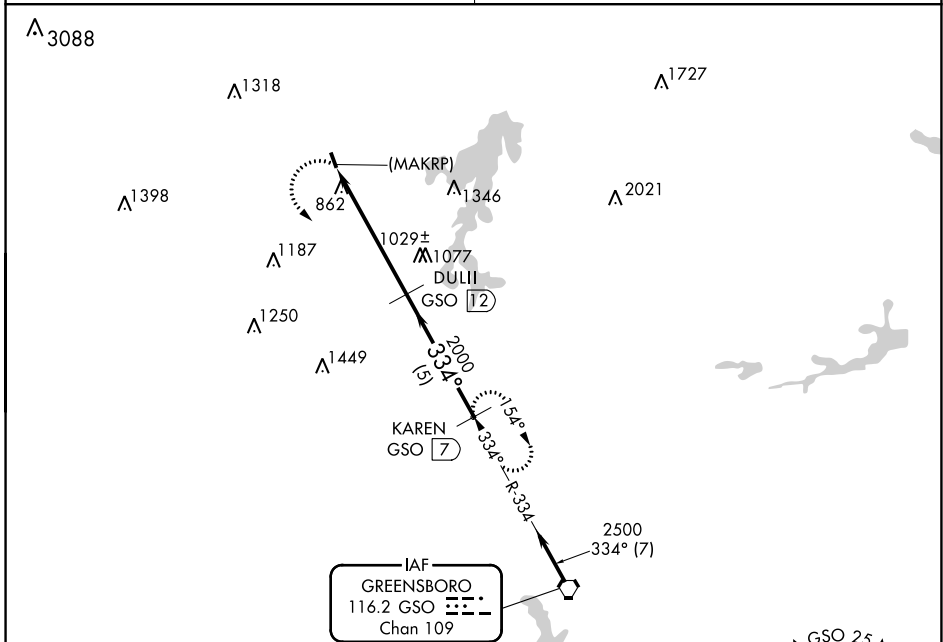
MEADOW BROOK FIELD (N63)

**▼** Use Smith Reynolds altimeter setting, when not available, use Greensboro altimeter setting and increase all MDAs 20 feet.  
**▲ NA** Procedure NA at night.

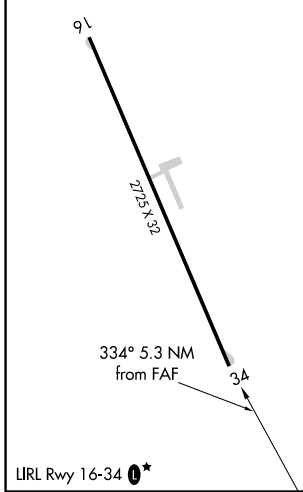
MISSED APPROACH: Climbing left turn to 2500 via GSO R-334 to KAREN GSO 7 DME and hold.

GREENSBORO APP CON  
**124.35 269.225**

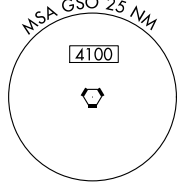
UNICOM  
**123.0 (CTAF) 0**



|      |     |      |     |
|------|-----|------|-----|
| ELEV | 631 | TDZE | 631 |
|------|-----|------|-----|



|          |                       |                         |    |   |
|----------|-----------------------|-------------------------|----|---|
|          | Procedure Turn<br>NA  |                         |    |   |
|          | (MAKRP) GSO 17.3      |                         |    |   |
| CATEGORY | A                     | B                       | C  | D |
| S-34     | 1400-1<br>769 (800-1) | 1400-1¼<br>769 (800-1¼) | NA |   |
| CIRCLING | 1400-1<br>769 (800-1) | 1400-1¼<br>769 (800-1¼) | NA |   |



SE-2, 08 OCT 2020 to 05 NOV 2020

SE-2, 08 OCT 2020 to 05 NOV 2020