

APP CRS	Rwy Idg	<b>4000</b>
<b>267°</b>	TDZE	<b>320</b>
	Apt Elev	<b>321</b>

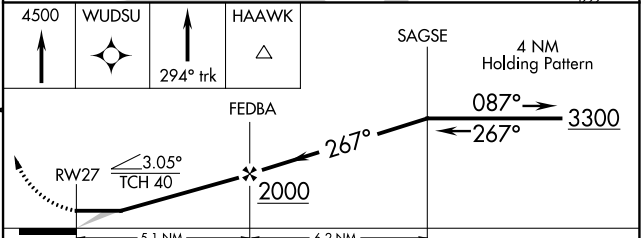
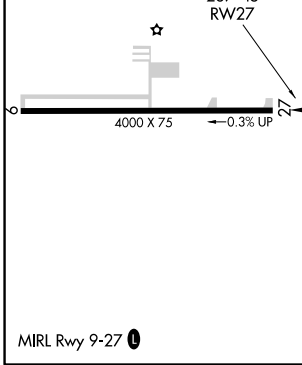
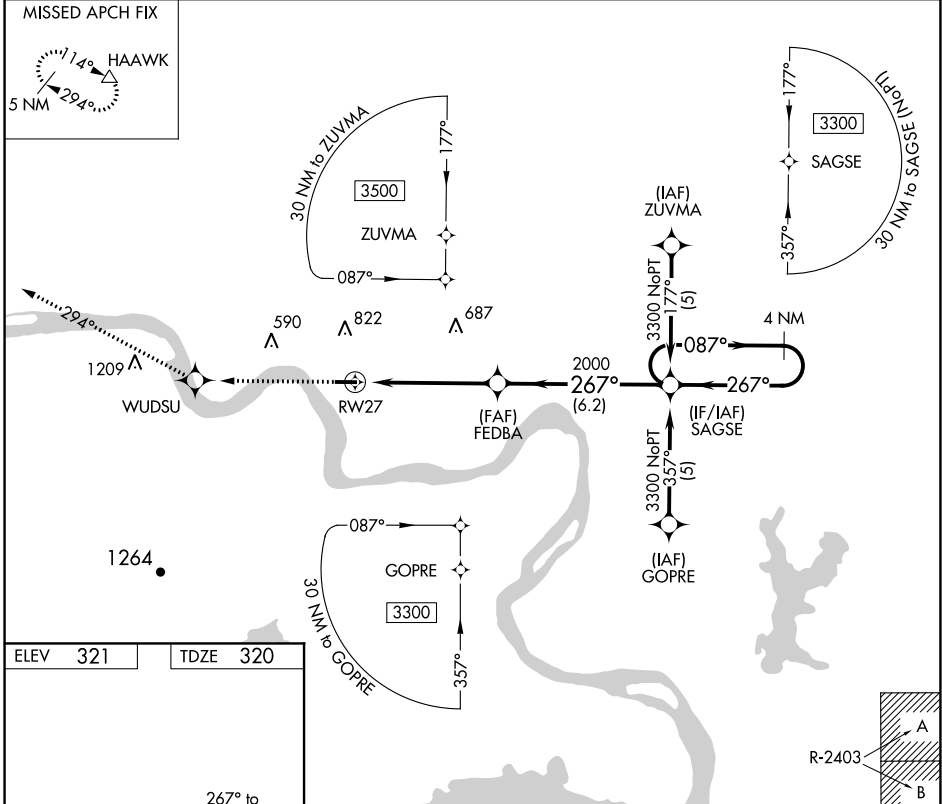
# RNAV (GPS) RWY 27

MORRILTON MUNI (BDQ)

▼ DME/DME RNP-0.3 NA. Use Russellville altimeter setting,  
▲ NA when not received, use Little Rock altimeter setting.

MISSED APPROACH: Climb to 4500 direct WUDSU and via 294° track to HAAWK and hold.

RUE AWOS <b>132.475</b>	MEMPHIS CENTER <b>128.475 377.15</b>	UNICOM <b>122.8 (CTAF)</b>	<b>122.9</b> <span>📶</span>
----------------------------	---	-------------------------------	-----------------------------



CATEGORY	A	B	C	D
LNAV MDA	1060-1	740 (800-1)	NA	
CIRCLING	1060-1 739 (800-1)	1200-1¼ 879 (900-1¼)	NA	

SC-1, 08 OCT 2020 to 05 NOV 2020

SC-1, 08 OCT 2020 to 05 NOV 2020