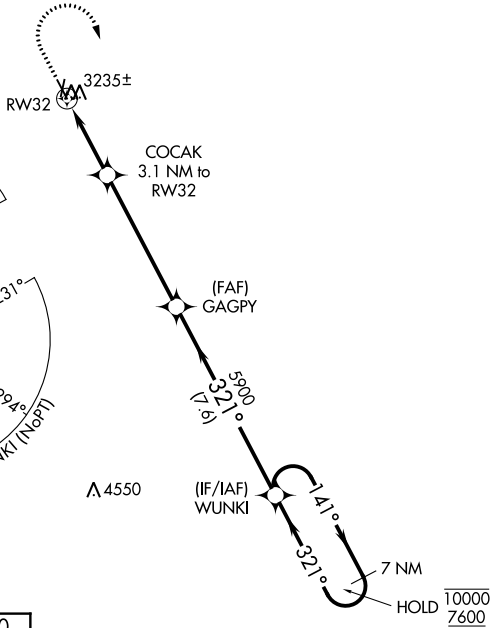
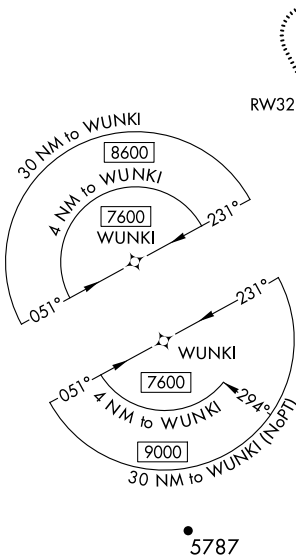


WAAS CH <b>82728</b> <b>W32A</b>	APP CRS <b>321°</b>	Rwy Idg TDZE Apt Elev	<b>4501</b> <b>3180</b> <b>3191</b>
--	------------------------	-----------------------------	---

# RNAV (GPS) RWY 32

BELLE FOURCHE MUNI (EFC)

RNP APCH.		MISSED APPROACH: Climb to 3800 then climbing right turn to 7600 direct WUNKI and hold. Continue climb-in-hold to 7600.
 	Baro-VNAV NA. Use Ellsworth altimeter setting.	
DENVER CENTER <b>127.95 338.2</b>		AUNICOM <b>122.8 (CTAF) 0</b>



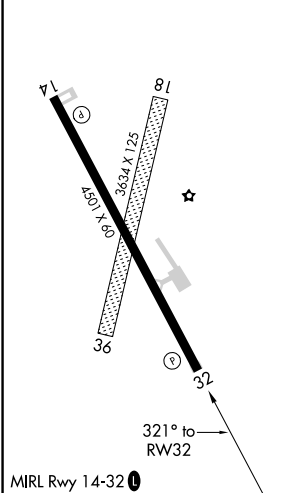
NC-1, 08 OCT 2020 to 05 NOV 2020

NC-1, 08 OCT 2020 to 05 NOV 2020

ELEV 3191	TDZE 3180
-----------	-----------

Λ 5266

3800	7600	WUNKI	VGSI and RNAV glidepath not coincident (VGSI Angle 3.00/TCH 33).	7 NM Holding Pattern
*LNAV only	COCAK 3.1 NM to RWY 32	GAGPY 5900	WUNKI	GP 3.00° TCH 40
	*4200	5900	141°	10000 / 7600



		A	B	C	D
LPV	DA	3553-1		373 (400-1)	NA
LNAV/VNAV	DA	3558-1		378 (400-1)	NA
LNAV	MDA	3660-1	480 (500-1)	3660-1 <sup>3</sup> / <sub>8</sub> 480 (500-1 <sup>3</sup> / <sub>8</sub> )	NA
	CIRCLING	3780-1 589 (600-1)	3820-1 629 (700-1)	3820-1 <sup>3</sup> / <sub>4</sub> 629 (700-1 <sup>3</sup> / <sub>4</sub> )	NA