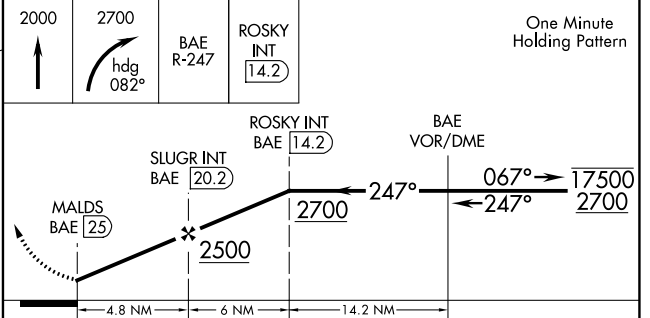
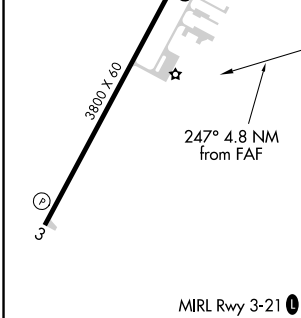
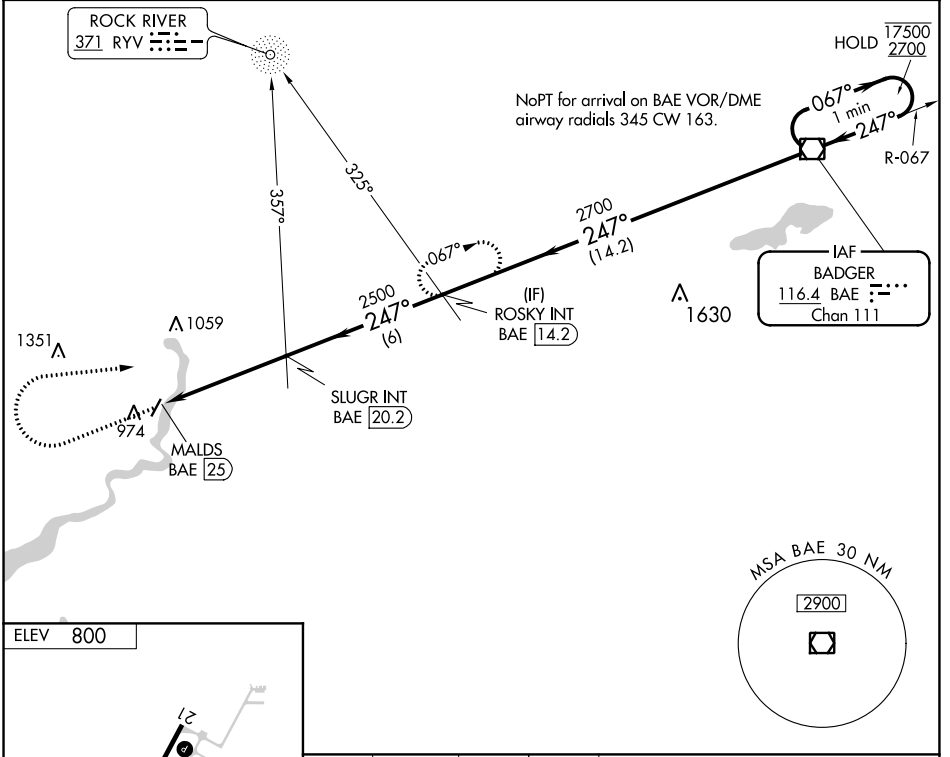


VOR/DME BAE 116.4 Chan 111	APP CRS 247°	Rwy Idg TDZE Apt Elev 800	N/A N/A 800
---	------------------------	--	-------------------

VOR-A
FORT ATKINSON MUNI (61C)

ADF or DME required.	MISSED APPROACH: Climb to 2000 then climbing right turn to 2700 on heading 082° and on BAE VOR/DME R-247 to ROSKY INT/BAE 14.2 DME and hold.
----------------------	--

Ryv AWOS-3 119.975	MADISON APP CON * 120.1 350.3	CTAF 122.9 0
------------------------------	---	------------------------



FAF to MAP 4.8 NM					
Knots	60	90	120	150	180
Min:Sec	4:48	3:12	2:24	1:55	1:36

CATEGORY	A	B	C	D
C CIRCLING	1440-1	640 (700-1)	1460-1 ³ / ₄ 660 (700-1 ³ / ₄)	NA

EC-3, 08 OCT 2020 to 05 NOV 2020

EC-3, 08 OCT 2020 to 05 NOV 2020