

APP CRS <b>227°</b>	Rwy Idg TDZE Apt Elev	<b>4301</b> <b>726</b> <b>730</b>
------------------------	-----------------------------	---

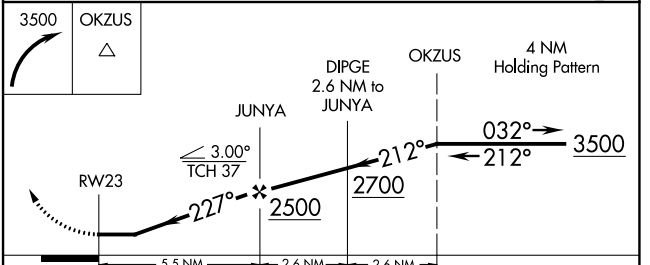
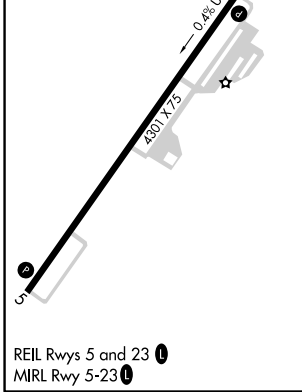
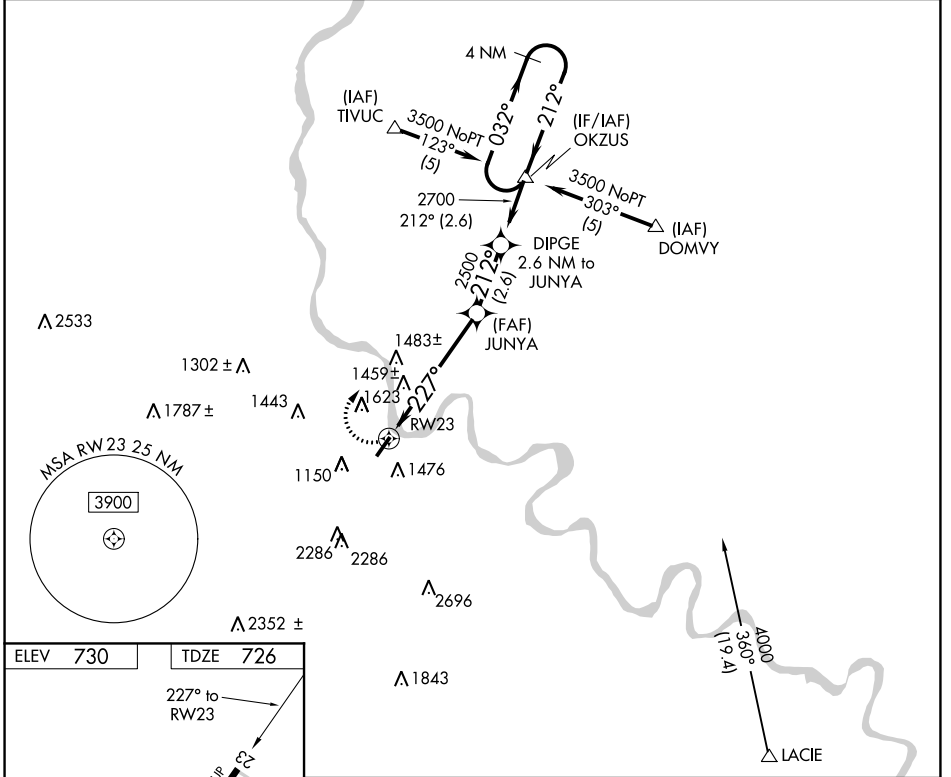
# RNAV (GPS) RWY 23

BRADFORD COUNTY (N27)

Use Tri-Cities, NY altimeter setting. GPS or RNP-0.3 required.  
 ▲ NA DME/DME RNP-0.3 NA. Night landing: RWY 5 NA.  
 ❄️ -24°C Helicopter visibility reduction below ¾ SM NA.

MISSED APPROACH: Climbing right turn to 3500 direct OKZUS WP and hold.

AWOS-3 <b>119.925</b>	BINGHAMTON APP CON <b>118.6 257.625</b>	UNICOM <b>123.0 (CTAF)</b>
--------------------------	--	-------------------------------



CATEGORY	A	B	C	D
LNAV MDA	1800-1¼ 1074 (1100-1¼)	1800-1½ 1074 (1100-1½)		NA
CIRCLING	2020-1¼ 1290 (1300-1¼)	2020-1½ 1290 (1300-1½)		NA

NE-4, 08 OCT 2020 to 05 NOV 2020

NE-4, 08 OCT 2020 to 05 NOV 2020