

WAAS CH 61235 W03A	APP CRS 027°	Rwy Idg 4002 TDZE 573 Apt Elev 632
--	------------------------	---

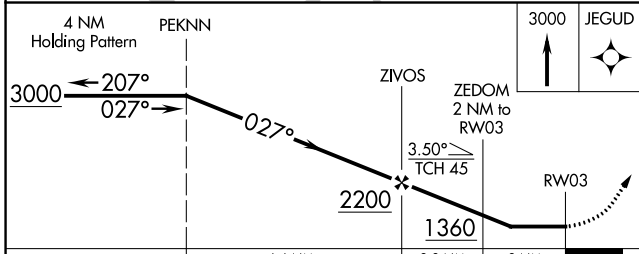
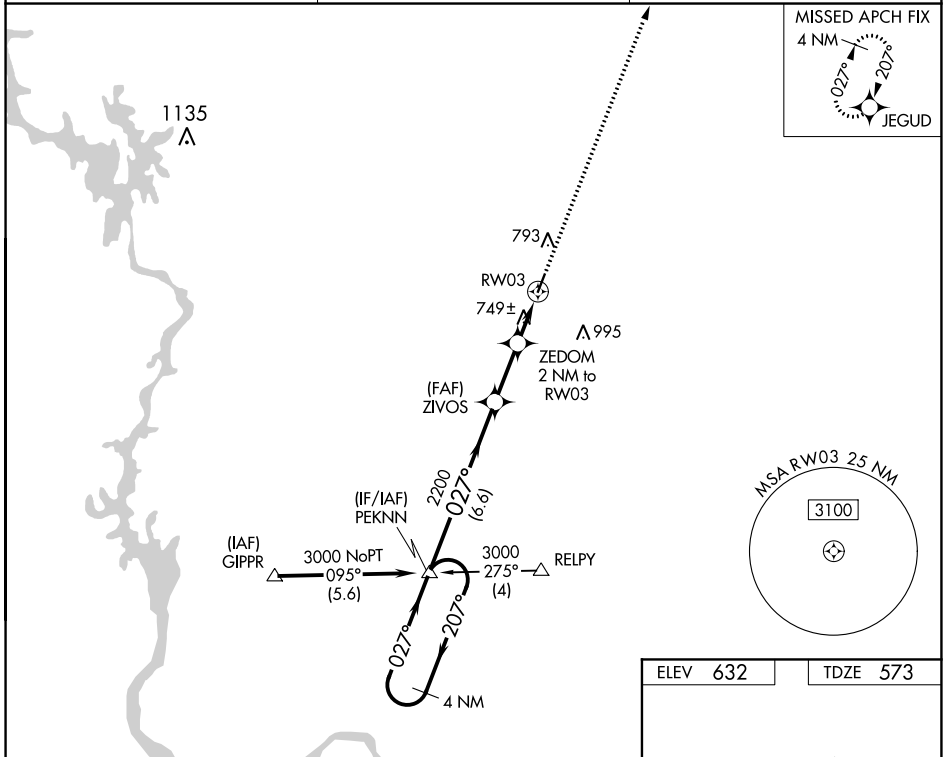
RNAV (GPS) RWY 3

MONTGOMERY COUNTY (43A)

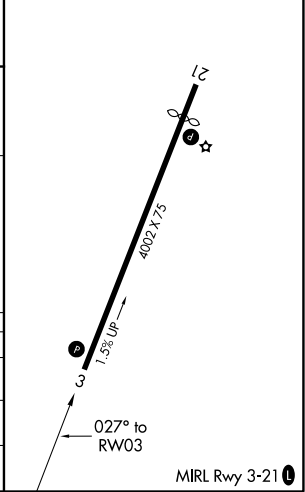
▼ Use Asheboro altimeter setting; when not received, use Albemarle altimeter setting.
▲ NA DME/DME RNP-0.3 NA. Procedure NA at night. Rwy 3, 21 helicopter visibility reduction below 1 SM NA.

MISSED APPROACH: Climb to 3000 direct JEGUD and hold.

HBI AWOS-3 119.275	FAYETTEVILLE APP CON 127.8 343.725	UNICOM 122.8 (CTAF) 0
------------------------------	--	---------------------------------



ELEV 632	TDZE 573
----------	----------



CATEGORY	A	B	C	D
LP MDA	1060-1	487 (500-1)		NA
LNAV MDA	1080-1	507 (500-1)		NA
C CIRCLING	1240-1 608 (700-1)	1340-1 708 (800-1)		NA

SE-2, 08 OCT 2020 to 05 NOV 2020

SE-2, 08 OCT 2020 to 05 NOV 2020