

WAAS CH <b>48927</b> <b>W07A</b>	APP CRS <b>067°</b>	Rwy ldg <b>5500</b> TDZE <b>585</b> Apt Elev <b>595</b>
--	------------------------	---

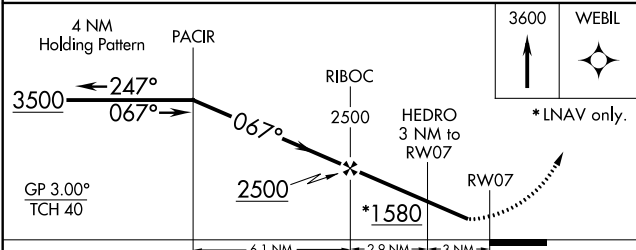
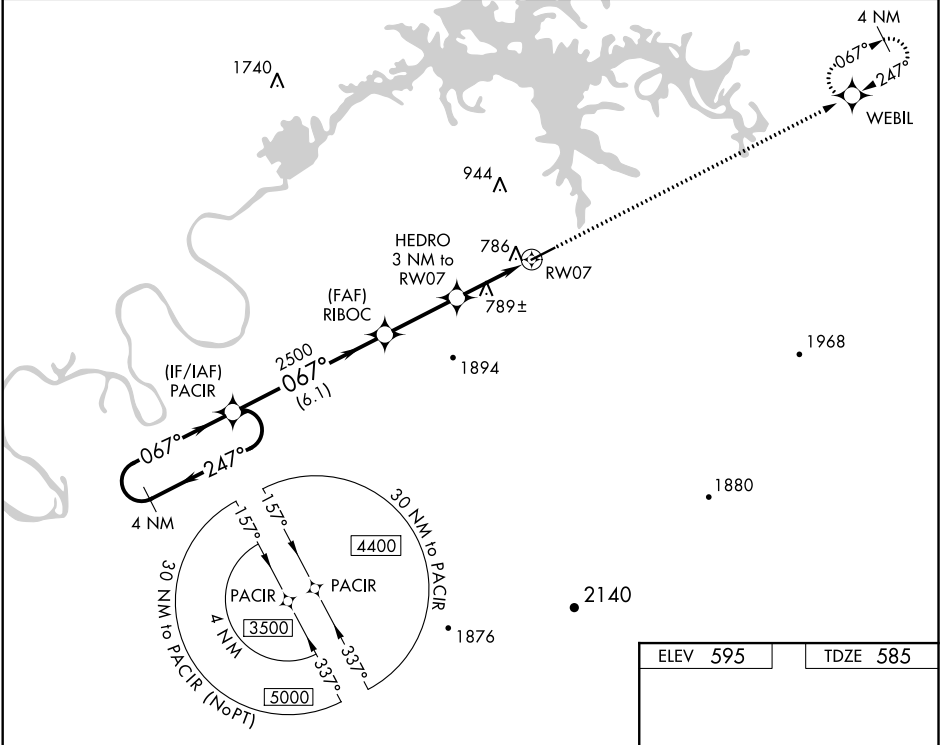
# RNAV (GPS) RWY 7

CENTRE-PIEDMONT CHEROKEE COUNTY RGNL (PYP)

**▼** Baro-VNAV NA. DME/DME RNP-0.3 NA. Helicopter visibility reduction below 3/4 SM NA.  
**▲ NA** Use Gadsden altimeter setting; when not received use Anniston altimeter setting and increase all DA/MDA 20 feet; increase LPV all Cats and LNAV Cats C/D visibility 1/8 mile.

**MISSED APPROACH:**  
Climb to 3600 direct WEBIL and hold.

GAD AWOS-3PT <b>127.825</b>	ATLANTA CENTER <b>124.5 270.325</b>	CTAF <b>122.90</b>
--------------------------------	--	-----------------------



ELEV <b>595</b>	TDZE <b>585</b>
-----------------	-----------------

CATEGORY	A	B	C	D
LPV DA		896-1	311 (400-1)	
LNAV/VNAV DA		1009-1½	424 (500-1½)	
LNAV MDA	1100-1	515 (600-1)	1100-1⅓	515 (600-1⅓)
CIRCLING	1160-1	565 (600-1)	1160-1½	1160-2 565 (600-2)

MIRL Rwy 7-25

SE-4, 08 OCT 2020 to 05 NOV 2020

SE-4, 08 OCT 2020 to 05 NOV 2020