

LOC/DME I-BBG 111.35 Chan 50 (Y)	APP CRS 323°	Rwy Idg 7140 TDZE 1302 Apt Elev 1302
---	------------------------	---

ILS or LOC RWY 32

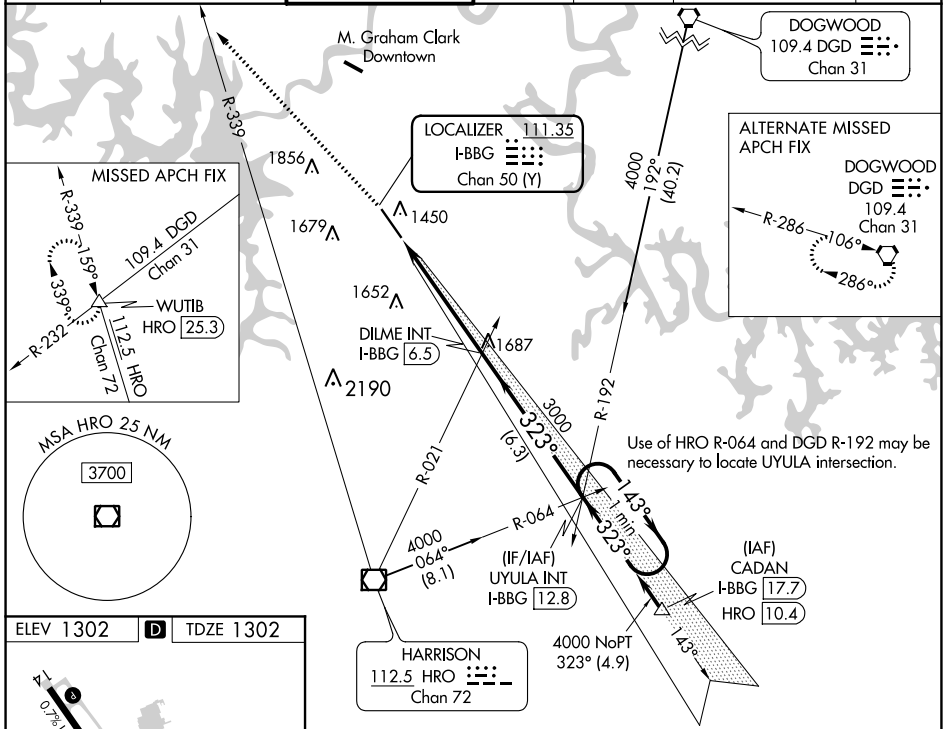
BRANSON (BBG)

NA Inoperative table does not apply. When local altimeter setting not received, use Harrison altimeter setting and increase all DA/MDA 60 feet and increase Circling Cat D visibility ¼ mile. VDP NA when using Harrison altimeter setting.

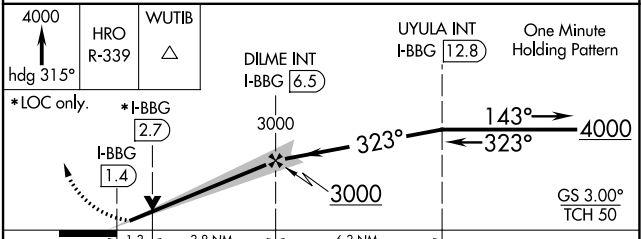
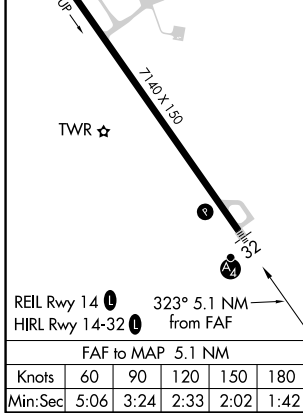
MALSF

MISSED APPROACH: Climb to 4000 on heading 315° and HRO VOR/DME R-339 to WUTIB INT/HRO 25.3 DME and hold.

ATIS 124.625	SPRINGFIELD APP CON 126.35	BRANSON TOWER* 128.15 (CTAF) 0	GND CON 118.4	CLNC DEL 118.4	SPRINGFIELD CLNC DEL 126.35 (When tower closed)	UNICOM 122.95
------------------------	--------------------------------------	---	-------------------------	--------------------------	--	-------------------------



ELEV 1302	D	TDZE 1302
-----------	----------	-----------



CATEGORY	A	B	C	D
S-ILS 32	1502-1 200 (200-1)			
S-LOC 32	1760-1	458 (500-1)	1760-1¼ 458 (500-1¼)	1760-1½ 458 (500-1½)
C CIRCLING	1760-1 458 (500-1)	1780-1 478 (500-1)	2220-2½ 918 (1000-2½)	2220-2¾ 918 (1000-2¾)

NC-3, 08 OCT 2020 to 05 NOV 2020

NC-3, 08 OCT 2020 to 05 NOV 2020