

| | | | |
|--|------------------------|-----------------------------|---|
| WAAS CH 69531 W27A | APP CRS 276° | Rwy Ldg TDZE Apt Elev | 4403 2036 2037 |
|--|------------------------|-----------------------------|---|

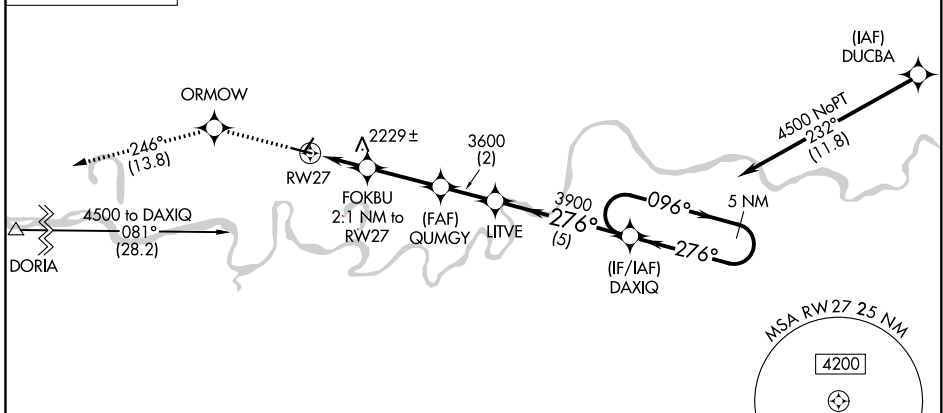
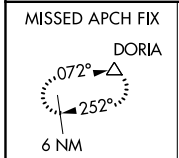
RNAV (GPS) RWY 27

POPLAR MUNI (PO1)

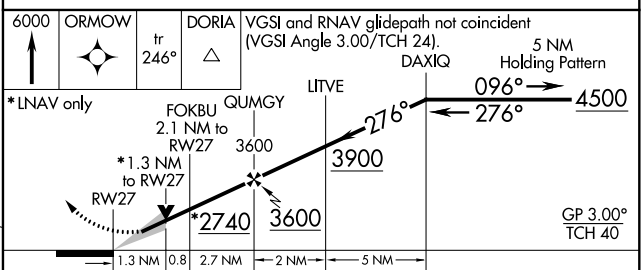
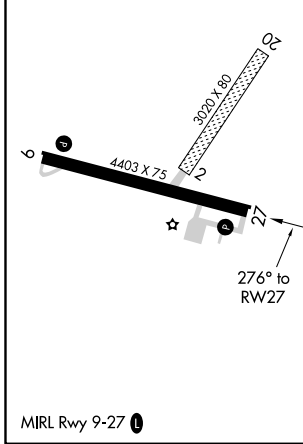
⚠ NA For uncompensated Baro-VNAV systems, LNAV/VNAV NA below -19°C (-2°F) or above 54°C (130°F). DME/DME RNP -0.3 NA. When local altimeter setting not received, use Wolf Point altimeter setting and increase all DA 46 feet and all MDA 60 feet and increase LNAV/VNAV all Cats visibility 1/8 mile and increase Circling Cat C visibility 1/4 mile. Baro-VNAV and VDP NA with Wolf Point altimeter setting. Helicopter visibility reduction below 1 SM not authorized. Circling NA to Rwy 2/20.

MISSED APPROACH: Climb to 6000 direct ORMOW and on track 246° to DORIA and hold, continue climb-in-hold to 6000.

| | | |
|---------------------------|---|---------------------------------|
| AWOS-AV 135.325 | SALT LAKE CITY APP CON 126.85 305.2 | UNICOM 122.8 (CTAF) 0 |
|---------------------------|---|---------------------------------|



| | |
|-----------|-----------|
| ELEV 2037 | TDZE 2036 |
|-----------|-----------|



| CATEGORY | A | B | C | D |
|--------------|----------------------------|-----------------------|-------------------------------|-----------------------|
| LPV DA | 2286-1 250 (300-1) | | | |
| LNAV/VNAV DA | 2536-1 3/4 500 (500-1 3/4) | | | |
| LNAV MDA | 2480-1 | 444 (500-1) | 2480-1 3/8 | 444 (500-1 3/8) |
| CIRCLING | 2560-1 523 (600-1) | 2600-1 563 (600-1) | 2600-1 1/2 563 (600-1 1/2) | 2600-2 563 (600-2) |

NW-1, 08 OCT 2020 to 05 NOV 2020

NW-1, 08 OCT 2020 to 05 NOV 2020