

WAAS CH 66031 W09A	APP CRS 095°	Rwy Idg TDZE Apt Elev	4403 2033 2037
---------------------------------	------------------------	-----------------------------	---

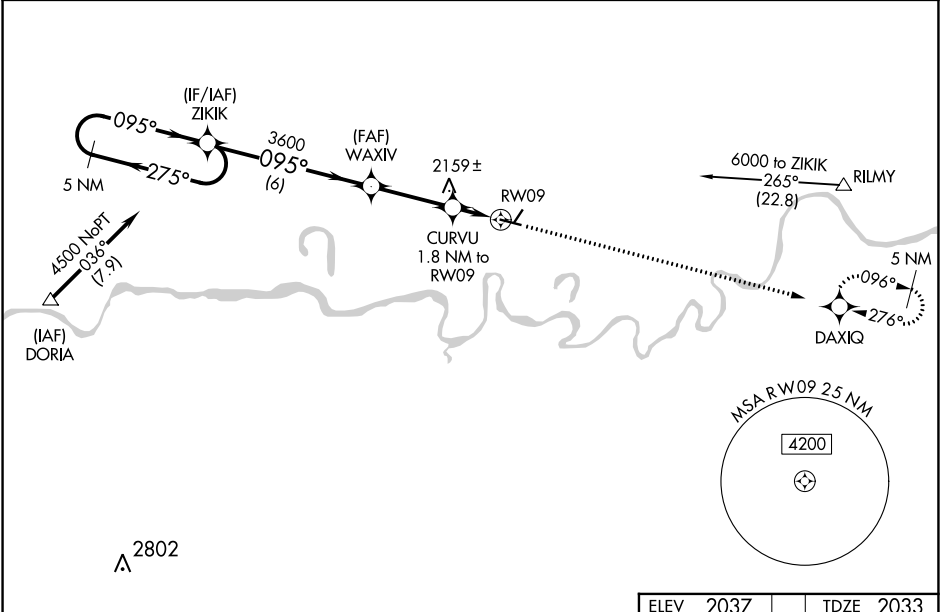
RNAV (GPS) RWY 9

POPLAR MUNI (PO1)

NA For uncompensated Baro-VNAV systems, LNAV/VNAV NA below -19°C (-2°F) or above 54°C (130°F). DME/DME RNP-0.3 NA. Baro-VNAV and VDP NA with Wolf Point altimeter setting. When local altimeter not received, use Wolf Point altimeter setting and increase all DA 46 feet and all MDA 60 feet, and increase LNAV Cats C and D and Circling Cat C visibility ¼ mile. Helicopter visibility reduction below 1 SM not authorized. Circling NA to Rwy 2/20.

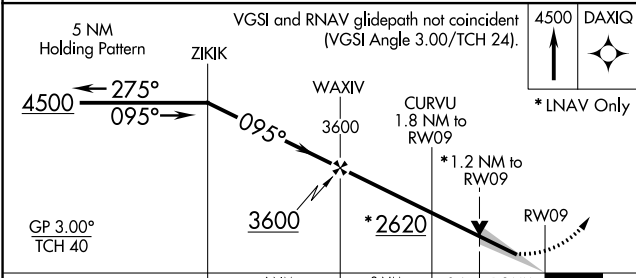
MISSED APPROACH: Climb to 4500 direct DAXIQ and hold.

AWOS-AV 135.325	SALT LAKE CITY APP CON 126.85 305.2	UNICOM 122.8 (CTAF)
---------------------------	---	-------------------------------



NW-1, 08 OCT 2020 to 05 NOV 2020

NW-1, 08 OCT 2020 to 05 NOV 2020



ELEV 2037	TDZE 2033
-----------	-----------

CATEGORY	A	B	C	D
LPV DA		2233-1	200 (200-1)	
LNAV/VNAV DA		2283-1	250 (300-1)	
LNAV MDA	2420-1	387 (400-1)	2420-1½	387 (400-1½)
CIRCLING	2560-1 523 (600-1)	2600-1 563 (600-1)	2600-1½ 563 (600-1½)	2600-2 563 (600-2)

