

WAAS CH <b>42538</b> <b>W31A</b>	APP CRS <b>313°</b>	Rwy Idg <b>5701</b> TDZE <b>2965</b> Apt Elev <b>2965</b>
--	------------------------	---

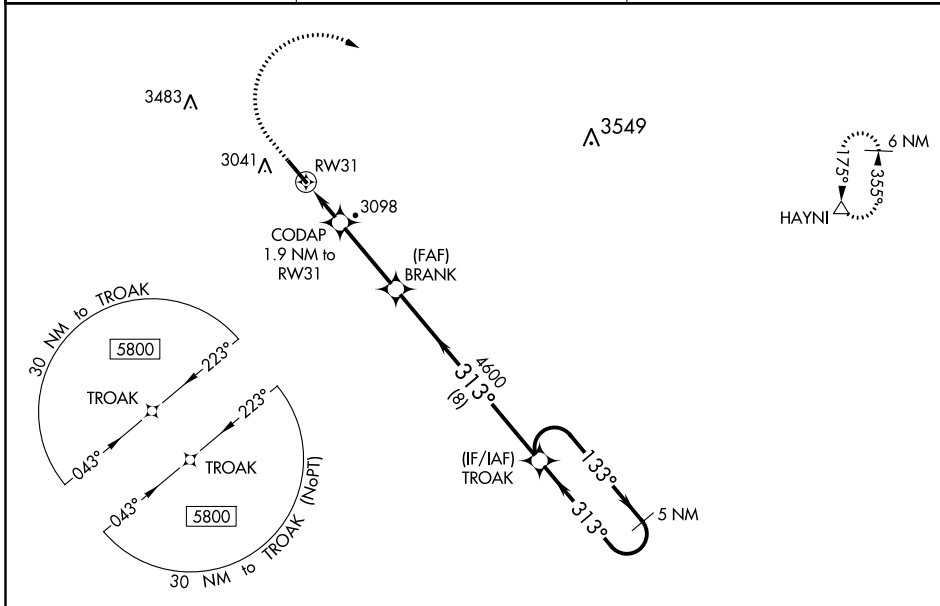
# RNAV (GPS) RWY 31

BOWMAN RGNL (BWW)

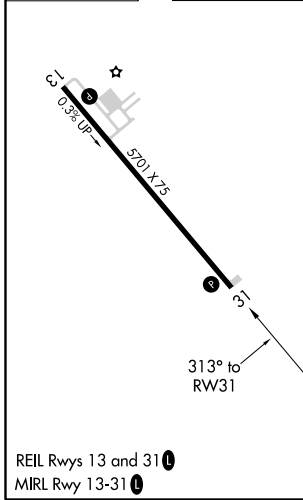
**⚠** For uncompensated Baro-VNAV systems, LNAV/VNAV NA below -20°C (-4°F) or above 54°C (130°F). DME/DME RNP-0.3 NA. When local altimeter setting not received, use Hettinger altimeter setting and increase all DA 102 feet, and all MDA 120 feet; increase LPV and LNAV/VNAV visibility ¼ mile all Cats, increase LNAV Cat C visibility ½ mile. Baro-VNAV and VDP NA when using Hettinger altimeter setting.

**MISSED APPROACH:**  
Climb to 3500 then climbing right turn to 6000 direct HAYNI and hold.

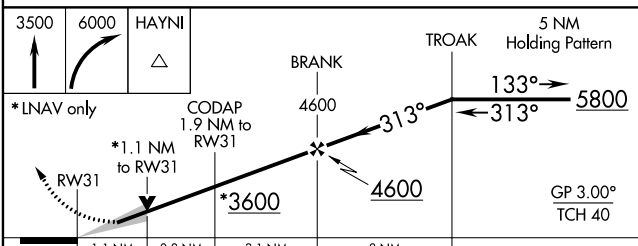
AWOS-3PT <b>118.075</b>	SALT LAKE CITY CENTER <b>126.85 305.2</b>	UNICOM <b>122.8 (CTAF)</b>
----------------------------	--	-------------------------------



ELEV <b>2965</b>	TDZE <b>2965</b>
------------------	------------------



REIL Rws 13 and 31  
MIRL Rwy 13-31



CATEGORY	A	B	C	D
LPV DA		3215-1	250 (300-1)	
LNAV/VNAV DA		3227-1	262 (300-1)	
LNAV MDA	3360-1	395 (400-1)	3360-1½	395 (400-1½)
<b>C</b> CIRCLING	3380-1 415 (500-1)	3420-1 455 (500-1)	3580-1¾ 615 (700-1¾)	3580-2 615 (700-2)

NC-1, 08 OCT 2020 to 05 NOV 2020

NC-1, 08 OCT 2020 to 05 NOV 2020