

CONTINUED FROM PRECEDING PAGE

RADIO AIDS TO NAVIGATION: NOTAM FILE VDZ.

MINERAL CREEK NDB (MHW) 524 MNL N61°07.45' W146°21.13' 060° 3.2 NM to fld. 16/19E.

NDB unusable:

320°-010° byd 15 NM

LDA/DME 109.5 I-VDZ Chan 32 Rwy 06. LOC and DME unusable byd 25° rgt of course all dist and alts. LOC and DME unusable byd 10° left of course all dist and alts. LOC and DME unusable byd 11.2 NM blo 4,635'.

COMM/NAV/WEATHER REMARKS: For a toll free call to Juneau FSS dial 1-866-297-2236.

VALLEY FLYING CROWN (See WASILLA on page 274)

VENETIE (VEE)(PAVE) 1 E UTC-9(-8DT) N67°00.52' W146°21.98'

574 B NOTAM FILE FAI

RWY 04-22: 4000X75 (GRVL) MIRL

RWY 04: Road.

RWY 22: Trees.

SERVICE: LGT ACTIVATE MIRL Rwy 04-22 and rot bcn—CTAF. Rotating bcn OTS indef. Twy lgts OTS indef.

AIRPORT REMARKS: Unattended. Cold temperature restricted airport. Altitude correction required at or below -42C. Maint in winter variable. Rwy 04-22 sfc slippery when wet, sfc uneven and sparsely graveled. Rwy 04 road transits rwy approximately 300' from thld. PPR before landing phone 907-849-8165. Construction equipment and persons operating on and in/ov rwy.

AIRPORT MANAGER: 907-849-8165

COMMUNICATIONS: CTAF 122.9

ANCHORAGE CENTER APP/DEP CON 135.0

RADIO AIDS TO NAVIGATION: NOTAM FILE FYU.

FORT YUKON (H) VORTAC 114.4 FYU Chan 91 N66°34.46'

W145°16.60' 296° 36.8 NM to fld. 449/20E.

VOR unusable:

001°-360° byd 15 NM

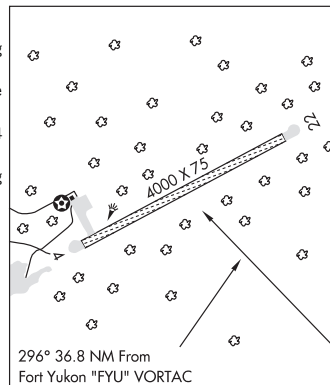
249°-259° byd 10 NM blo 4,900'

COMM/NAV/WEATHER REMARKS: For a toll free call to Fairbanks FSS dial 1-866-248-6516.

FAIRBANKS

H-1B, L-4J

IAP



WAINAW LAKE SPB (See WASILLA on page 274)

WAINWRIGHT

WAINWRIGHT (AWI)(PAWI) 1 SE UTC-9(-8DT) N70°38.28' W159°59.69'

45 B NOTAM FILE AWI

RWY 06-24: 4494X110 (GRVL) MIRL

RWY 06: REIL. PAPI(P4L)—GA 3.0° TCH 31'. Antenna.

RWY 24: REIL. PAPI(P4R)—GA 3.0° TCH 30'.

SERVICE: LGT ACTIVATE REIL Rwy 06 and Rwy 24, PAPI Rwy 06 and Rwy 24, MIRL Rwy 06-24—CTAF.

AIRPORT REMARKS: Unattended. Rwy condition not monitored; recommend visual inspection prior to using. Cold temperature restricted airport. Altitude correction required at or below -42C. Twr 40' AGL 500' north of rwy. Birds on and in/ov arpt. Soft sfc on ramp and twy, prone to rutting and ponding.

AIRPORT MANAGER: (907) 852-0489

WEATHER DATA SOURCES: ASOS 132.25 (907) 763-8881. (WX CAM)

COMMUNICATIONS: CTAF 122.8

WAINWRIGHT RCO 122.5 (BARROW RADIO)

ANCHORAGE CENTER APP/DEP CON 135.3 239.25

RADIO AIDS TO NAVIGATION: NOTAM FILE AWI.

NDB (HW) 338 UKK N70°38.26' W160°00.56' at fld.

38/12E.

COMM/NAV/WEATHER REMARKS: Local call to Barrow FSS dial 907-852-2511. For a toll free call to Barrow FSS call 1-800-779-7709. For a toll free call to Fairbanks dial 1-866-248-6516.

CAPE LISBURNE

H-1A, L-4I

IAP

