

POST MILLS (2B9) 0 E UTC-5(-4DT) N43°53.02' W72°15.13'

NEW YORK

696 NOTAM FILE BTV

RWY 04-22: 2900X80 (TURF)

RWY 04: Trees. Rgt tfc.

RWY 22: Road.

RWY 05-23: 2300X80 (TURF) 0.8% up NE

RWY 05: Trees. Rgt tfc.

RWY 23: Road.

SERVICE: S2

AIRPORT REMARKS: Attended irregularly. Ultralights; gliders and hot air balloons on and invof arpt. Trees 200' from end of Rwsy 22 and 23. 60' trees directly adjacent to runway edge, left. Uniform width and length of Runways 05-23 is 2,200' 80'. Non-std turf cones placement—do not use delineate actual thlds—all rwsy. Acft ops counts unavailable. No snow removal. Arpt open to ski acft only when snow covered. Call 802-333-9254 for info. Propane avbl for hot air balloons.

AIRPORT MANAGER: 802-333-9254

COMMUNICATIONS: CTAF/UNICOM 122.8

CLEARANCE DELIVERY PHONE: For CD ctc Boston ARTCC at 603-879-6859.

RUTLAND – SOUTHERN VERMONT RGNL (RUT)(KRUT) 5 S UTC-5(-4DT) N43°31.78'

NEW YORK

W72°56.98'

H-11D, 12K, L-32G

787 B Class IV, ARFF Index A NOTAM FILE RUT

IAF

RWY 01-19: H5304X100 (ASPH-GRVD) S-40, D-68, 2S-86

PCN 30 F/D/X/U MIRL

RWY 01: VASI(V2R)—GA 3.5° TCH 17'. Thld dspcd 300'. Hill.

RWY 19: MALSR. PAPI(P4L)—GA 3.2° TCH 55'. Rgt tfc.

RWY 13-31: H3169X75 (ASPH) S-30 PCN 5 F/D/X/U MIRL

RWY 13: REIL. Road.

RWY 31: Trees.

RUNWAY DECLARED DISTANCE INFORMATION

RWY 01: TORA-5303 TODA-5303 ASDA-5303 LDA-5003

RWY 19: TORA-5003 TODA-5003 ASDA-5003 LDA-5003

SERVICE: S4 FUEL 100LL, JET A LGT ACTIVATE MALSR Rwy 19; REIL

Rwy 13; MIRL Rwy 01-19 and 13-31—CTAF.

AIRPORT REMARKS: Attended 1200-0100Z. For after hrs svc call 802-773-3348. Rwy conditions may not be monitored or reported when the arpt is unattended. Birds on and invof arpt. Rwy 13-31 not avbl for lds and takeoffs by air carriers with 10 or more passenger seats. CLOSED to unscheduled air carrier ops with more than 9 passenger seats except 48 hr PPR call arpt manager 802-786-8881. Use Twy A to tax to or from AER 01 or 19. Twy C connects main aprn with Twy A. Acft with wingspans exceeding 79' authorized to use Twy H and Twy B east of Rwy 01-19 and Rwy 13-31 for taxing and Rwy 01 and Rwy 19 for tfof and ldg. Noise sensitive area southeast of arpt ctc arpt manager. Type I and type IV deicing avbl. Cold temperature rstd arpt. Alt correction rqrd at or blo -8C. Ldg/parking fees may apply for non-based acft.

AIRPORT MANAGER: 802-786-8881

WEATHER DATA SOURCES: AWOS-3PT 118.375 (802) 747-3044.

COMMUNICATIONS: CTAF/UNICOM 122.8

RCO 122.3 (BURLINGTON RADIO)

BOSTON CENTER APP/DEP CON 135.7

CLEARANCE DELIVERY PHONE: For CD ctc Boston ARTCC at 603-879-6859.

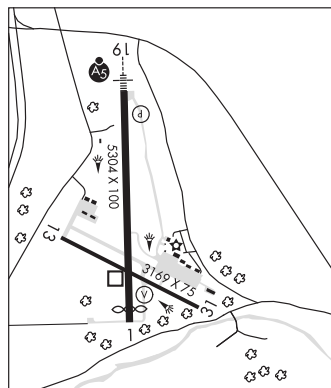
RADIO AIDS TO NAVIGATION: NOTAM FILE RUT.

SMUTO NDB (MHW) 221 DYO N43°42.37' W72°57.40' 193° 10.6 NM to fld. 1138/15W.

NDB unusable:

351°-189° byd 15 NM

ILS/DME 111.7 I-RUT Chan 54 Rwy 19. Class IA. Glideslope unusable byd 4.00° right of course.



SHELburne (VT8) 2 S UTC-5(-4DT) N44°21.62' W73°13.58'

MONTRÉAL

325 NOTAM FILE BTV

RWY 01-19: 3077X60 (TURF)

RWY 01: Trees.

RWY 19: Trees.

SERVICE: S4 FUEL MOGAS

AIRPORT REMARKS: Attended daylight hours. No line of sight btn rwy ends. For rwy cond—AMGR.

AIRPORT MANAGER: 802-985-2100

COMMUNICATIONS: CTAF/UNICOM 122.8

CLEARANCE DELIVERY PHONE: For CD ctc Burlington Apch at 802-657-4401, when Apch clsd ctc Boston ARTCC at 603-879-6859.