

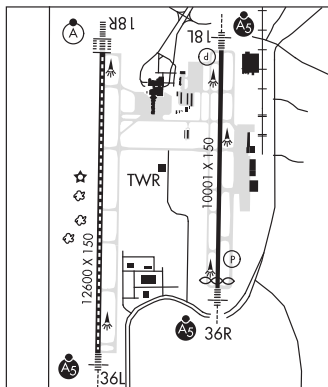
HUNTSVILLE INTL—CARL T JONES FLD (HSV)(KHSV) 9 SW UTC-6(-5DT) N34°38.23'ATLANTA
H-6K, 9A, L-18H
IAP, AD

W86°46.50'

629 B AOE LRA Class I, ARFF Index C NOTAM FILE HSV MON Airport

RWY 18R-36L: H12600X150 (ASPH-CONC-GRVD) S-120, D-250,
2D-550 PCN 120F/A/X/T HIRL CL**RWY 18R:** ALSF2. TDZL. RVR-TMR Rgt tfc.**RWY 36L:** MALSR. TDZL. RVR-TMR**RWY 18L-36R:** H10001X150 (ASPH-GRVD) S-120, D-250, 2S-175,
2D-550 PCN 105F/B/W/T HIRL**RWY 18L:** MALSR. PAPI(P4R)—GA 3.0° TCH 73'. RVR-TR**RWY 36R:** MALSR. PAPI(P4R)—GA 3.0° TCH 72'. RVR-TR Thld
dspclcd 200'. Rgt tfc.**RUNWAY DECLARED DISTANCE INFORMATION****RWY 18L:**TORA-10001 TODA-10001 ASDA-9801 LDA-9801**RWY 18R:**TORA-12600 TODA-12600 ASDA-12600 LDA-12600**RWY 36L:**TORA-12600 TODA-12600 ASDA-12600 LDA-12600**RWY 36R:**TORA-10001 TODA-10001 ASDA-10001 LDA-9801**SERVICE:** S4 FUEL 100LL, JET A QX 1, 2, 3, 4 LGT ACTVT MALSRRwy 18L, Rwy 36L, and Rwy 36R; HIRL Rwy 18L-36R and Rwy
18R-36L—CTAF. Rwy 18R ALSF on step 2 when ATCT clsd.**AIRPORT REMARKS:** Attended continuously. Line up and wait not
authorized. Int of Twy J and svc road are unctd. Twy C5 clsd. Flt
notification svc (ADCUS) avbl.**AIRPORT MANAGER:** 256-258-1955**WEATHER DATA SOURCES:** ASOS 121.25 (256) 772-8074. WSP**COMMUNICATIONS:** CTAF 127.6 ATIS 121.25 UNICOM 122.95

RCO 122.2 (ANNISTON RADIO)

Ⓡ **APP/DEP CON** 118.05 (180°-359°) 125.6 (360°-179°) (1200-0600Z‡)**MEMPHIS CENTER APP/DEP CON** 120.8 (0600-1200Z‡)**TOWER** 127.6 (1200-0600Z‡) **GND CON** 121.9 **CLNC DEL** 120.35**CLEARANCE DELIVERY PHONE:** For CD if una to ctc on FSS freq, ctc Memphis ARTCC at 901-368-8453.**AIRSPACE:** CLASS C svc ctc **APP CON** svc 1200-0600Z‡; other times CLASS E.**VOR TEST FACILITY (VOT)** 111.0**RADIO AIDS TO NAVIGATION:** NOTAM FILE DCU.**DECATUR (L) VORW/DME** 112.8 DCU Chan 75 N34°38.90' W86°56.37' 096° 8.2 NM to fld. 590/1W. VOR/DME
unmonitored.**ILS** 111.9 I-TVN Rwy 18L. Class IE.**ILS** 109.3 I-HSV Rwy 18R. Class IIIE.**ILS** 108.5 I-ELL Rwy 36L. Class IE.**ILS/DME** 109.55 I-JJC Chan 32(Y) Rwy 36R. Class IE. LOC unusable byd 20° left of course.**ASR****MOONTOWN** (3M5) 7 E UTC-6(-5DT) N34°44.84' W86°27.66'

ATLANTA

655 B NOTAM FILE ANB

RWY 09-27: 2180X160 (TURF) LIRL 1.0% up W**RWY 09:** Tree.**RWY 27:** Road. Rgt tfc.**SERVICE:** S2 FUEL 100LL LGT ACTIVATE LIRL Rwy 09-27 and rotg bcn—CTAF. Rotg bcn OTS indef. Twy lgts for twy
turnoff only.**AIRPORT REMARKS:** Attended 1600-0000Z‡.**AIRPORT MANAGER:** 256-852-9781**COMMUNICATIONS:** CTAF/UNICOM 122.7Ⓡ **HUNTSVILLE APP/DEP CON** 125.6 (1200-0600Z‡) other times ctcⓇ **MEMPHIS CENTER APP/DEP CON** 120.8**CLEARANCE DELIVERY PHONE:** For CD ctc Huntsville Apcd at 256-542-2070, when Apcd clsd ctc Memphis ARTCC at
901-368-8453.**ISBELL FLD** (See FORT PAYNE on page 51)**JACK EDWARDS NATIONAL** (See GULF SHORES on page 54)