

LOC/DME I-BYH 110.3 Chan 40	APP CRS 181°	Rwy Idg 11602 TDZE 250 Apt Elev 254
---	------------------------	--

ILS or LOC RWY 18

ARKANSAS INTL (BYH)

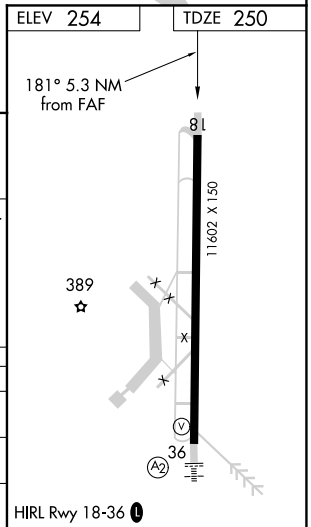
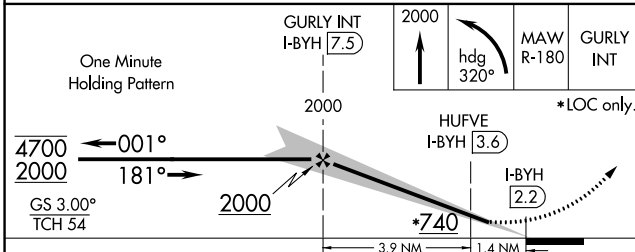
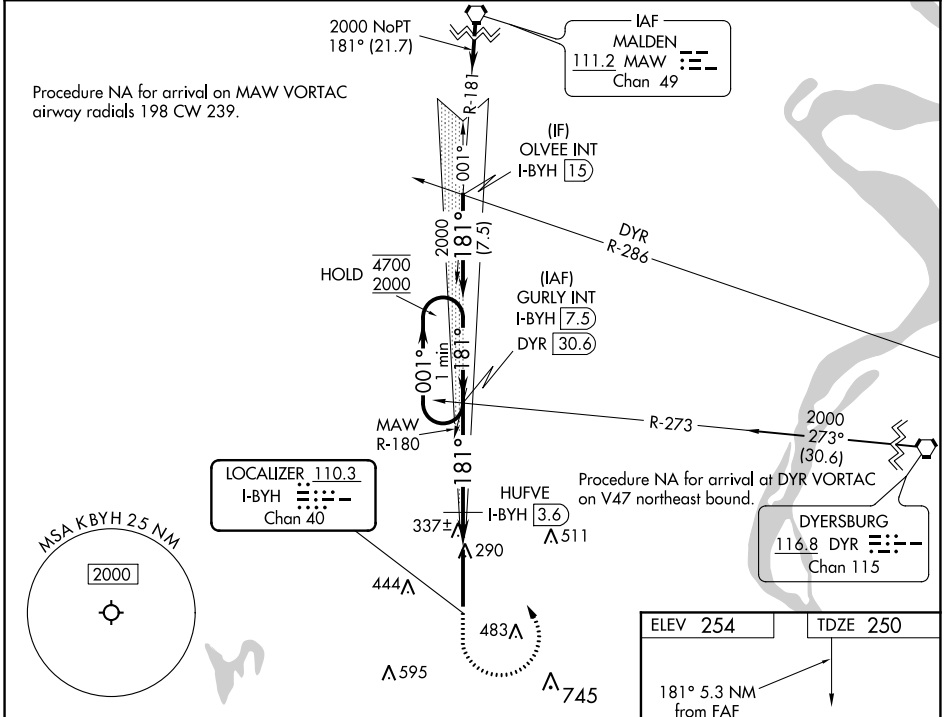
DME required for LOC only.
DME required for DYR VORTAC to GURLY transition.

▽ Circling NA east of Rwy 18 and 36. Obtain local altimeter setting on CTAF, when not received, use Blytheville Muni altimeter setting and increase DA to 464 feet and all MDAs 20 feet.

△NA

MISSED APPROACH: Climb to 2000, then left turn heading 320° and MAW VORTAC R-180 to GURLY INT and hold.

MEMPHIS CENTER 134.65 316.15	UNICOM 122.7 (CTAF) 0
--	---------------------------------



CATEGORY	A	B	C	D
S-ILS 18		450-3/4	200 (200-3/4)	
S-LOC 18		600-1	350 (400-1)	
C CIRCLING	700-1 446 (500-1)	720-1 466 (500-1)	800-1 1/2 546 (600-1 1/2)	820-2 566 (600-2)

SC-1, 05 NOV 2020 to 03 DEC 2020

SC-1, 05 NOV 2020 to 03 DEC 2020