

LOC/DME I-RUJ <b>108.5</b> Chan 22	APP CRS <b>320°</b>	Rwy Idg <b>9618</b> TDZE <b>25</b> Apt Elev <b>26</b>
--	------------------------	---

# ILS or LOC RWY 32

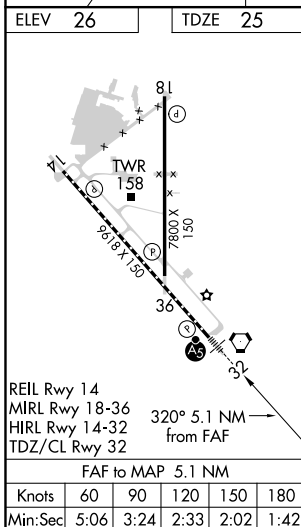
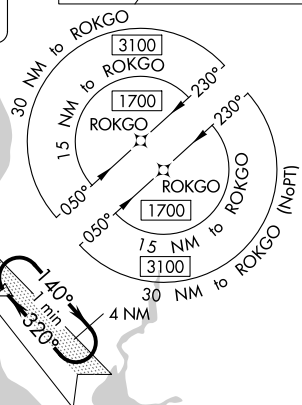
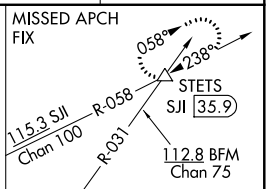
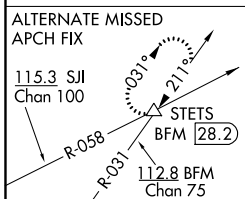
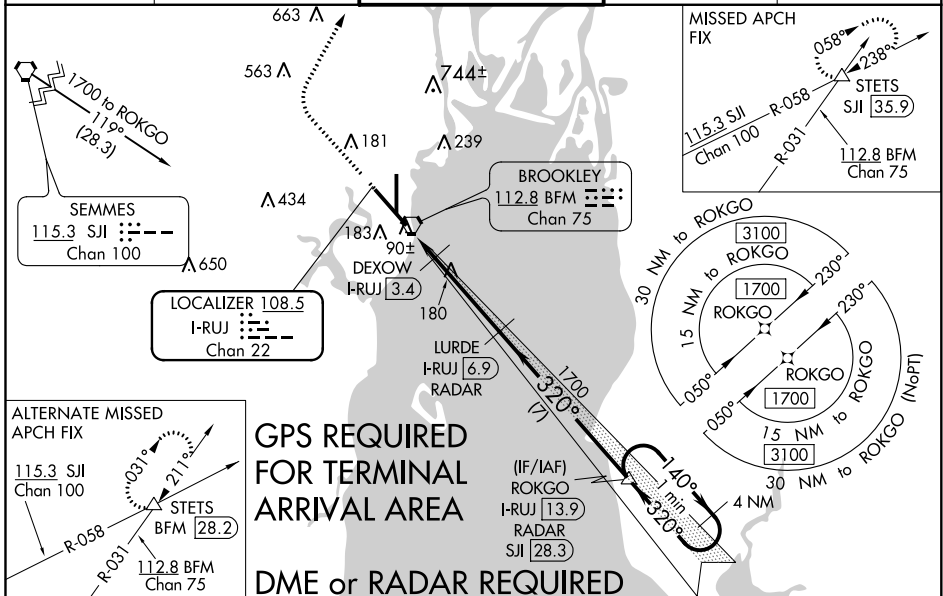
MOBILE DOWNTOWN (BFM)

**⚠** DME or radar required. When local altimeter setting not received, use Mobile Rgnl altimeter setting and increase all DA 50 feet and all MDA 60 feet, increase S-LOC 32 Cat C/D visibility ½ mile and Circling Cat C visibility ¼ mile, increase DEXOW fix minimums S-LOC 32 Cats C/D visibility ¼ mile. For inop MALSR increase S-ILS 32 all Cats visibility to RVR 4000. VDP NA when using Mobile Rgnl altimeter setting.



**MISSED APPROACH:** Climb to 800 then climbing right turn to 2000 on heading 030° and SJI R-058 to STETS INT/SJI 35.9 DME and hold.

ATIS <b>135.575</b>	MOBILE APP CON ★ <b>118.5 269.3</b>	DOWNTOWN TOWER ★ <b>118.8 (CTAF) 251.1</b>	GND CON <b>121.7 239.3</b>	UNICOM <b>122.95</b>
------------------------	--	---	-------------------------------	-------------------------



ELEV 26	TDZE 25	800	2000	SJI R-058	STETS	VGSI and ILS glidepath not coincident (VGSI Angle 3.00/TCH 71).
		hdg 030°				LURDE I-RUJ [6.9] RADAR
						ROKGO I-RUJ [13.9] RADAR
						One Minute Holding Pattern
		*LOC only				
		I-RUJ [1.8] I-RUJ [2.6]		DEXOW I-RUJ [3.4]		
		0.8 NM 0.8 NM		3.5 NM		7 NM
		580*		1700		*640 when using Mobile Rgnl altimeter setting. GS 3.00° TCH 55
		320°		140°		1700
		← 320°				
CATEGORY	A	B	C	D		
S-ILS 32	225/18		200 (200-½)			
S-LOC 32	580/24	555 (600-½)	580-1¼		555 (600-1¼)	
<b>C</b> CIRCLING	680-1	654 (700-1)	680-1¾		1100-3 1074 (1100-3)	
DEXOW FIX MINIMUMS						
S-LOC 32	340/24	315 (400-½)	340/26		315 (400-½)	
<b>C</b> CIRCLING	680-1	654 (700-1)	680-1¾		1100-3 1074 (1100-3)	

SE-4, 05 NOV 2020 to 03 DEC 2020

SE-4, 05 NOV 2020 to 03 DEC 2020