

LOC/DME I-SEM 110.5 Chan 42	APP CRS 329°	Rwy Idg 8014 TDZE 165 Apt Elev 166
---	------------------------	---

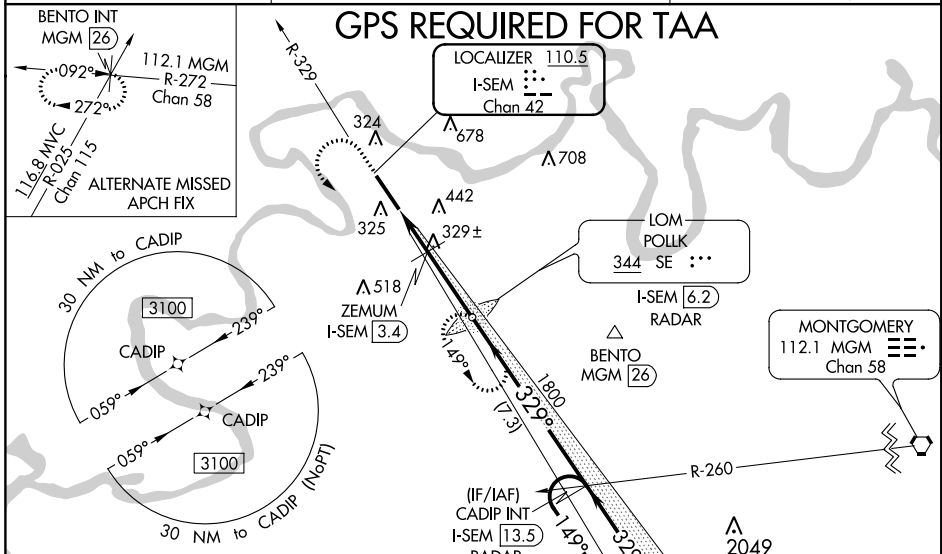
ILS Y or LOC Y RWY 33

CRAIG FIELD (SEM)

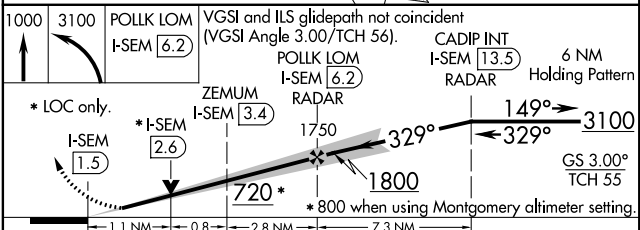
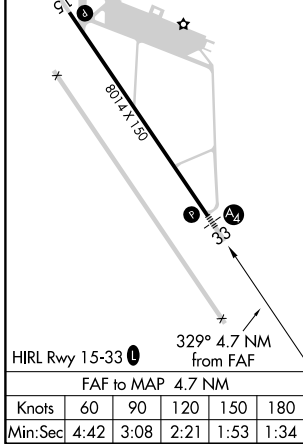
▼ For inoperative MALS, increase S-LOC 33 Cat D visibility to 1 1/2 mile and increase ZEMUM fix minimums S-LOC 33 Cats C and D visibility to 1 1/2 mile. VDP NA with Montgomery altimeter setting. When local altimeter setting not received, use Montgomery altimeter setting and increase DA 78 feet, all MDA 80 feet, increase S-LOC 33 Cats C and D visibility 1/2 mile, Circling Cat C visibility 1/2 mile and Circling Cat D visibility 1/2 mile, increase ZEMUM fix minimums S-LOC 33 Cats C and D visibility 1/2 mile and Circling Cat C visibility 1/2 mile and Circling Cat D visibility 1/2 mile. For inoperative MALS, when using Montgomery altimeter setting, increase S-ILS 33 all Cats visibility to 2/3 mile, S-LOC 33 Cats C and D visibility to 1 1/4 mile and increase ZEMUM fix minimums Cats C and D visibility to 1 1/2 mile. ADF required.

MALS
 MISSED APPROACH: Climb to 1000 then climbing left turn to 3100 direct POLLK LOM/I-SEM 6.2 DME/RADAR and hold, continue climb-in-hold to 3100.

AWOS-3PT 119.15	MONTGOMERY APP CON * 124.0 363.025	UNICOM 122.7 (CTAF)
---------------------------	--	-------------------------------



ELEV 166	TDZE 165
----------	----------



CATEGORY	A	B	C	D
S-ILS 33	365-3/4 200 (200-3/4)			
S-LOC 33	720-3/4	555 (600-3/4)	720-1 1/8	555 (600-1 1/8)
CIRCLING	720-1	760-1	760-1 1/2	1040-2 3/4
	554 (600-1)	594 (600-1)	594 (600-1 1/2)	874 (900-2 3/4)
ZEMUM FIX MINIMUMS				
S-LOC 33	580-3/4	415 (500-3/4)	580-1	415 (500-1)
CIRCLING	660-1	760-1	760-1 1/2	1040-2 3/4
	494 (500-1)	594 (600-1)	594 (600-1 1/2)	874 (900-2 3/4)

SE-4, 05 NOV 2020 to 03 DEC 2020

SE-4, 05 NOV 2020 to 03 DEC 2020