


LOC/DME I-SEM 110.5 Chan 42	APP CRS 329°	Rwy Idg 8014 TDZE 165 Apt Elev 166
-------------------------------------------------	------------------------	---------------------------------------------------------------

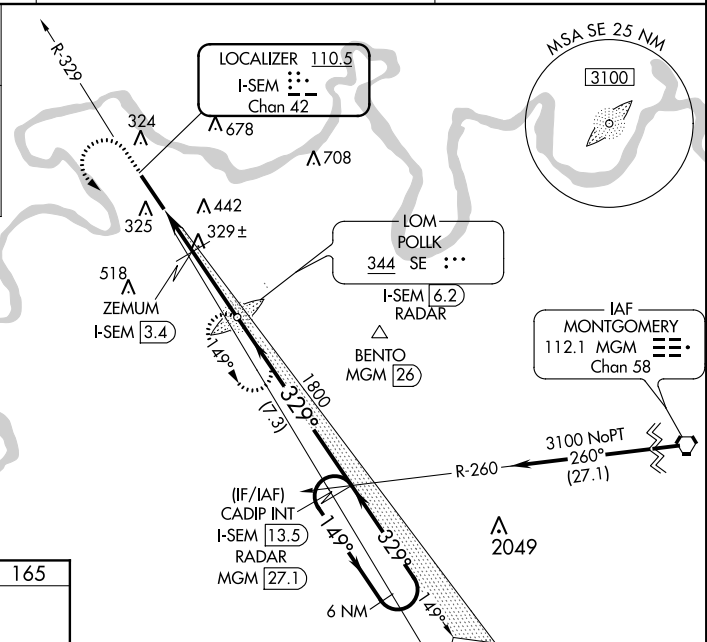
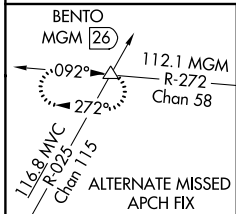
ILS Z or LOC Z RWY 33

CRAIG FIELD (SEM)

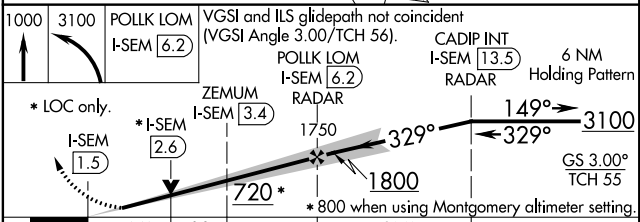
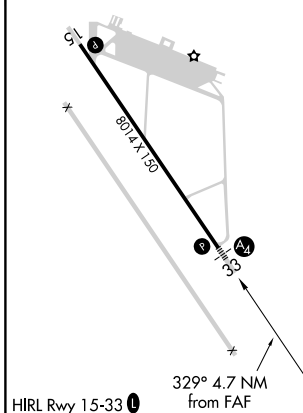
⚠ For inoperative MALS, increase S-LOC 33 Cat D visibility to 1 $\frac{1}{2}$ and increase ZEMUM fix minimums S-LOC 33 Cats C and D visibility to 1 $\frac{1}{2}$ mile. VDP NA with Montgomery altimeter setting. When local altimeter setting not received, use Montgomery altimeter setting and increase DA 78 feet, all MDA 80 feet, increase S-LOC 33 Cats C and D visibility $\frac{1}{2}$ mile, Circling Cat C visibility $\frac{1}{2}$ mile and Circling Cat D visibility $\frac{1}{2}$ mile, increase ZEMUM fix minimums S-LOC 33 Cats C and D visibility $\frac{1}{2}$ mile and Circling Cat C visibility $\frac{1}{2}$ mile and Circling Cat D visibility $\frac{1}{2}$ mile. For inoperative MALS, when using Montgomery altimeter setting, increase S-ILS 33 all Cats visibility to $\frac{1}{2}$ mile, S-LOC 33 Cats C and D visibility to 1 $\frac{1}{4}$ mile and increase ZEMUM fix minimums Cats C and D visibility to 1 $\frac{1}{2}$ mile. ADF required.

MALS

MISSED APPROACH: Climb to 1000 then climbing left turn to 3100 direct POLLK LOM/I-SEM 6.2 DME/RADAR and hold, continue climb-in-hold to 3100.

AWOS-3PT 119.15	MONTGOMERY APP CON * 124.0 363.025	UNICOM 122.7 (CTAF) 0
---------------------------	----------------------------------------------	----------------------------------------



ELEV 166	TDZE 165
----------	----------



CATEGORY	A	B	C	D
S-ILS 33	365- $\frac{3}{4}$ 200 (200- $\frac{3}{4}$)			
S-LOC 33	720- $\frac{3}{4}$	555 (600- $\frac{3}{4}$)	720-1 $\frac{1}{8}$	555 (600-1 $\frac{1}{2}$)
C CIRCLING	720-1 554 (600-1)	760-1 594 (600-1)	760-1 $\frac{1}{2}$ 594 (600-1 $\frac{1}{2}$)	1040-2 $\frac{3}{4}$ 874 (900-2 $\frac{3}{4}$)

ZEMUM FIX MINIMUMS				
S-LOC 33	580- $\frac{3}{4}$	415 (500- $\frac{3}{4}$)	580-1	415 (500-1)
C CIRCLING	660-1 494 (500-1)	760-1 594 (600-1)	760-1 $\frac{1}{2}$ 594 (600-1 $\frac{1}{2}$)	1040-2 $\frac{3}{4}$ 874 (900-2 $\frac{3}{4}$)

FAF to MAP 4.7 NM					
Knots	60	90	120	150	180
Min:Sec	4:42	3:08	2:21	1:53	1:34

SE-4, 05 NOV 2020 to 03 DEC 2020

SE-4, 05 NOV 2020 to 03 DEC 2020