

WAAS CH 69435 W15A	APP CRS 149°	Rwy Idg TDZE 166 Apt Elev 166	8014
--	------------------------	---	-------------

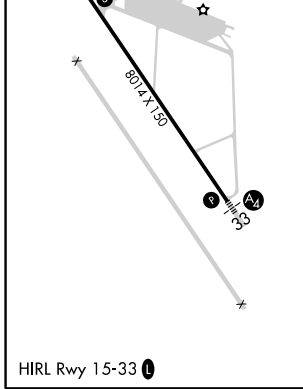
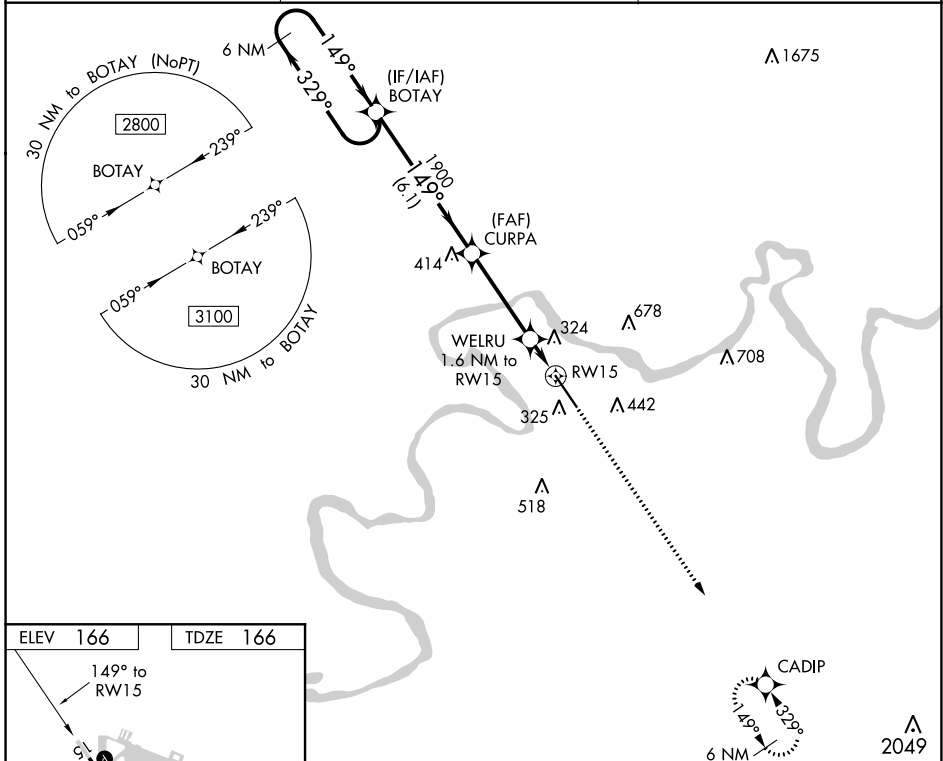
RNAV (GPS) RWY 15

CRAIG FIELD (SEM)

⚠ Baro-VNAV NA when using Montgomery altimeter setting. For uncompensated Baro-VNAV systems, LNAV/VNAV NA below -15°C (5°F) or above 54°C (130°F). DME/DME RNP-0.3 NA. VDP NA with Montgomery altimeter setting. When local altimeter setting not received, use Montgomery altimeter setting and increase all DA 78 feet, all MDA 80 feet, LPV all Cats visibility 3/8 mile, LNAV/VNAV all Cats visibility and LNAV Cats C and D visibility 1/4 mile, Circling Cat C visibility 1/2 mile and Cat D visibility 1/4 mile.

MISSED APPROACH:
Climb to 3100 direct CADIP and hold.

AWOS-3PT 119.15	MONTGOMERY APP CON * 124.0 363.025	UNICOM 122.7 (CTAF) 0
---------------------------	--	---------------------------------



6 NM Holding Pattern BOTAY 2800 ← 329° → 149° → 1900 GP 3.00° TCH 45	VGSI and RNAV glidepath not coincident (VGSI Angle 3.00/TCH 50). CURPA WELRU 1.6 NM to RW15 1900 *720 *1.1 NM to RW15 6.1 NM 3.7 NM 0.5 NM 1.1 NM			3100 CADIP ⬆️ *LNAV only
	CATEGORY A	CATEGORY B	CATEGORY C	CATEGORY D
LPV DA	416-3/4 250 (300-3/4)			
LNAV/VNAV DA	569-1 3/8 403 (500-1 1/8)			
LNAV MDA	560-1 394 (400-1)		560-1 1/8 394 (400-1 1/8)	
CIRCLING	660-1 494 (500-1)	760-1 594 (600-1)	760-1 1/2 1040-2 3/4 874 (900-2 3/4)	

SE-4, 05 NOV 2020 to 03 DEC 2020

SE-4, 05 NOV 2020 to 03 DEC 2020